

# news Broadland

SUMMER 2021

## Summer in Broadland



# New Chairman elected

**Cllr Roger Foulger has been appointed as the new Chairman of Broadland District Council. He represents Drayton South and brings many years of experience to the role.**

"It is a great pleasure and honour to have been elected as Chairman of the Council," said Cllr Foulger.

"I was first elected to the Council in 2002 and since then I have served in several Cabinet posts including the Environment, Housing and Planning portfolios. "I have a great interest in improving the lives of our residents, making sure that

essential infrastructure is put in place while protecting our local environment.

"I would like to thank Cllr Karen Vincent for her incredible service to the Council as Chairman over the past two years and I am looking forward to representing Broadland District Council at community events and functions throughout the district once



COVID-19 restrictions are lifted."

Cllr Foulger's chosen charity for his year in office is the East Anglian Air Ambulance.


## Useful contacts


[www.southnorfolkandbroadland.gov.uk](http://www.southnorfolkandbroadland.gov.uk)

Main switchboard: 01603 431133

Mon - Fri, 8.30am - 5pm

Our email addresses will soon be changing to  
@southnorfolkandbroadland.gov.uk

 facebook.com/BroadlandDistrictCouncil

 twitter.com/BroadlandDC

 southnorfolkandbroadlandc

**Benefits** 01603 430602 [benefits@broadland.gov.uk](mailto:benefits@broadland.gov.uk)

**Council Tax** 01603 430600 [council.tax@broadland.gov.uk](mailto:council.tax@broadland.gov.uk)

**Environmental services (bins, recycling, waste, dog fouling)**  
01603 430534 [environ.protection@broadland.gov.uk](mailto:environ.protection@broadland.gov.uk)

**Housing advice** 01603 430641 [housing.options@broadland.gov.uk](mailto:housing.options@broadland.gov.uk)

**Licensing** 01603 430574 [licensing@broadland.gov.uk](mailto:licensing@broadland.gov.uk)

**Planning** 01603 430509 [planning.administration@broadland.gov.uk](mailto:planning.administration@broadland.gov.uk)

**Pollution control (noise, bonfires)** 01603 430488  
[environ.protection@broadland.gov.uk](mailto:environ.protection@broadland.gov.uk)

**Broadland News is distributed to over 62,500 homes and businesses in the Broadland district, three times a year.**

Advertisements featured in Broadland News do not mean the Council endorses those companies or services in any way. Broadland News is printed on paper made from recycled material. Events and services are correct at time of printing but may change.

### Editorial

Marketing and Communications Team, Thorpe Lodge, 1 Yarmouth Road, Norwich, NR7 0DU.  
t: 01603 430124  
e: [comms@broadland.gov.uk](mailto:comms@broadland.gov.uk)

## Contents

6 Pleased to see you

8 Chairman's year in review

14 Community at Heart Awards

16 Community Lottery

## A message from the leader

### Welcome to the summer edition of Broadland News.

As things start to get back to what will be our new normal the Council has an ambitious agenda to help our businesses recover and to drive forward our local economy.

This month we will start construction of our new Food Innovation Centre, an exciting new project that will help food producers create new products using the amazing ingredients grown in our region. This new project sits on the Food Enterprise Zone, an area for new and existing businesses to process the produce we grow locally rather than sending it to other parts of the country. Businesses like Condimentum who provide Colman's with locally grown mint and mustard used in their sauces.

Not only is this good for our local economy, creating jobs and boosting inward investment, it is

also good for the environment, reducing the number of food miles our local produce travels. Protecting the environment is a priority for this Council and that is why I am so proud that we have reserved £750,000 for environmental projects in Broadland.

I would like to thank you for the support you have given to our Community at Heart Lottery. With your help we are well on our way to raising over £50,000 for local causes this year that matter to you, another example of the wonderful community spirit that is alive and well in our district.

I would also like to thank the many community groups that are continuing to offer help and support to residents still suffering from the effects of the COVID-19 pandemic. As things start to get back to normal there will be some among us who are

worried because they are behind on their rent, others may be having trouble paying their bills and many will be worried about their jobs. Remember if you need help, or if you know someone who needs a hand our Help Hub is there to offer both advice and practical help.

Many of our staff are working remotely, but we have invested in technology to make sure that they are available and easy to contact and our new website has been designed to make it easier for you to contact us at a time that suits you.





## Food Innovation starts in Broadland

**Construction of Broadland District Council's Food Innovation Centre can now get underway - following confirmation of European funding.**

The ground-breaking for this exciting new project is planned for July with the first tenants expected in summer 2022.

The Food Innovation Centre (FIC) will be built on the Food Enterprise Park, just off the A47 and is set to become an international centre of excellence and expertise.



Leader of the Council, Cllr Shaun Vincent said: "The Food Innovation Centre will help us

support food and drink businesses and make it easier for existing businesses to expand, attracting investment and boosting the rural economy.

"The FIC will give us the opportunity to help nurture new ideas and enable us to focus more on processing Norfolk's agricultural output locally, minimising food miles and reducing the environmental impact."

Research has identified that about 6% of the UK's food is produced in Norfolk, but less than half of that is processed in the county.

The FIC is the first in the region and offers a unique opportunity to capitalise on our incredible local knowledge being perfectly placed to benefit from world class

research relating to agri-tech, food and health and life sciences.

Businesses will be able to draw on expertise from Hethel Innovation Centre and Norwich Research Park and the strong local agricultural, food and drink industry in the region.

The project will include food grade units, with access to test kitchens and sensory testing facilities to help new and established food companies work together and develop new product lines. Working together will improve productivity and enable all parts of the sector to share ideas, all along the supply chain.

We have attracted £10 million of external investment towards the £11.4 million total cost of the

project with £5.7 million coming from the European Regional Development fund and £1.44 million from The New Anglia LEP, and £2.7 million from the government's Getting Building Fund.

The FIC will join Condimentum on Broadland District Council's Food Enterprise Zone (FEZ).

A farmer-backed consortium, Condimentum, applied to build the new unit at the FEZ after securing a 10-year deal with Colman's owner Unilever. Their £10.8 million investment resulted in a 25,000sq.ft site that opened in January 2020.

The plant processes mint and grinds mustard seeds into flour, keeping part of Colman's mustard production in Norfolk, following the closure of their site in Norwich

- and all of Condimentum's growers are situated within a two hour radius of the site.

Condimentum chief executive David Martin said the "state-of-the-art" plant would help to safeguard growers' futures.

"We have growers investing in our business who have relationships that go back generations with Colman's".

The new facility provided about 25 jobs initially, but it is hoped it will eventually become a "global supplier of ingredients".

The FEZ is covered by a Local Development Order (LDO) granted by Broadland District Council, which means food-related businesses meeting agreed criteria can build without the need for extra planning consent.

The fast-track planning process afforded by the LDO means businesses can get up and running quickly, something that will benefit a huge range of tenants, from smaller, new businesses up to large established organisations.

A key aim of the FEZ is to correct that shortfall in food processing and if Norfolk can double its share of this sector, so it more closely reflects its share of agricultural production, it would add more than £800m to the county's economy.

**For further information about the FIC please email: [foodinnovationcentre@broadland.gov.uk](mailto:foodinnovationcentre@broadland.gov.uk)**





# Pleased to see you

Throughout the pandemic the Council has been doing all it can to support and protect our local economy. Our teams have been working with local businesses offering help and advice and we have distributed £1 million of grants for every week that we have been in lockdown.

Since restrictions started to ease in April, we have been helping our high streets and shopping centres to bounce back, through our 'Pleased to See You' campaign. The campaign has been supporting local shops, hairdressers, pubs and restaurants and other local retailers by encouraging shoppers back onto the high street.

The district's shops were decorated in brightly coloured bunting and displayed posters and banners that encouraged people to shop locally while staying safe.

Cllr Jo Copplestone, Portfolio Holder for Economic Development said: "One of our key priorities is to grow our local economy, so we are doing all we can to get local businesses back on their feet and get those tills ringing."

"We've been working hard to encourage people to shop local, but it's really important that they do so in a safe and secure way."  
Cllr Jo Copplestone

As well as reassuring residents and helping to make local shops and amenities safe places to visit, we have also been re-emphasising the 'Hands Face Space Fresh Air' message to help avoid any further surges or a return to lockdown.

Our COVID-19 Support Advisors have been visiting businesses, providing advice and non-slip floor stickers. They have also been distributing posters and

'Please wear your mask' signage for businesses to display on doors and windows.

To further boost customer confidence, we have been offering businesses the chance to take part in a COVID-19 Safe Certification process. [southnorfolkandbroadland.gov.uk/business/covid-safe-certificate](https://southnorfolkandbroadland.gov.uk/business/covid-safe-certificate)

You may have noticed businesses with the new certificate on prominent display.

This means that they have met all the requirements of our Environmental Health team.

Cllr Copplestone added: "The reaction from the local businesses has been really positive and we are working together to look at



other ways we can continue to support them over the coming weeks and months."

The 'Pleased to see you' campaign forms part of our ongoing support to businesses. Over the past year, we have distributed more than £40 million of grant funding to qualifying businesses, to help lessen the financial impact of the pandemic.

**For more information on the business support available, please visit our website. [southnorfolkandbroadland.gov.uk](https://southnorfolkandbroadland.gov.uk)**



HM Government



EUROPEAN UNION  
European Regional Development Fund

# Welcome back

COVID-19 restrictions have resulted in hospitality businesses being one of the hardest hit sectors in our local economy. We understand the importance of pubs, restaurants and hotels to our communities as they are often the only business and employer in rural parts of our district.

We have supported our hospitality businesses throughout the pandemic, helping them to be best placed to welcome back customers and start pulling pints as soon as possible.

During the lockdowns we distributed more than £1 million to help this vital sector survive.

Nicola Colchester, proprietor of the Recruiting Sergeant and the Rising Sun, told us: "The grants that we received from Broadland District Council were instrumental in enabling us to welcome customers back to the pubs from 12 April. We invested the grant in a marquee, outdoor heaters, coverings and new furniture. Thank you so much!"

**You can find out what help is available by visiting [southnorfolkandbroadland.gov.uk](https://southnorfolkandbroadland.gov.uk)**







## Chairman's two years in review

**At the Council's AGM on 27th May, Cllr Karen Vincent stood down from the role of Broadland District Council Chairman.**

The role of Council Chairman is an elected position and normally the office is held for one year. However, the Council's AGM in 2020 was cancelled due to the pandemic, requiring Cllr Vincent to continue as Chairman for a second year.

Cllr Vincent said: "It has been an honour and a privilege to serve as Chairman, particularly so during the coronavirus pandemic. One of the most rewarding parts of the role has been meeting inspirational people who do so much to help others."

During Cllr Vincent's first year in office she was able to carry out the role in a traditional way, chairing Council meetings in person, attending civic events, opening community facilities and meeting residents and community groups.

COVID-19 brought many challenges, to which the Council

responded at speed, one of which was enabling meetings to be held virtually via zoom within days of the pandemic ensuring that decisions were still made. Cllr Vincent, in her role as Chairman, is extremely thankful to the team for making this possible.

Cllr Vincent said: "During my time in office I have seen the very best that people have to offer and have been able to recognise some amazing acts of kindness and selflessness from our COVID-19 Community Heroes and Community at Heart Award winners."



The COVID-19 pandemic has been the biggest challenge that our community has faced in a century and the residents of Broadland rose to that challenge showing a tremendous community spirit.

The Council also celebrated the wonderful achievements of Broadland residents with a virtual Community at Heart Awards ceremony during which Cllr Vincent informed Evie that she had won our award for Young Person of the Year.

Cllr Vincent was the official starter for the popular Marriotts Way 10k race and awarded medals to all those who finished the course, having run through torrential rain.

Cllr Vincent also cut the ribbon to open the brand-new sports pavilion in Rackheath, a facility that will enable hundreds of children to take part in their favourite outdoor sport.

In May 2020, Cllr Vincent helped commemorate the 75th anniversary of VE Day and paid her respects to Armed Forces personnel at Old Catton War Memorial alongside Armed Forces veterans. She also attended other flag-raising ceremonies around the district and featured in a commemorative video.

Whenever possible, and when safe to do so, Cllr Vincent continued to meet residents and presented Covid-19 Hero Awards at a socially distanced event on the lawns of the Council building.

The Council has supported the local economy throughout the pandemic and Cllr Vincent launched our Shop with



Confidence campaign. She visited many of our local businesses, both large and small, to show the Council's support and to thank them for the way they had diversified to help fight COVID-19.

During her time as Chairman, Cllr Vincent organised a number of fundraising events, with all proceeds going to her chosen charity, Big C. A cheque for £3,583 was presented at the AGM in May to Dr Chris Bushby CEO of the charity and David Moar, founder of Big C.

Cllr Vincent said: "Big C, Norfolk's Cancer Charity is a cause

close to my heart and I am pleased to have been able to help raise funds for Big C and its Closer to Home Appeal."

"As I step down as Chairman, I would like to extend my thanks to everyone who supported our District and communities through such a challenging time. I hope the recovery in Broadland will be that much faster because of your efforts.

"I would like to congratulate Cllr Foulger on his election as Chairman and he has my very best wishes for his term in office."



# Full steam ahead!

**There is so much to do this summer in Broadland. Help us to support our local tourist attractions.**

This summer visit the Bure Valley Railway and enjoy a trip from their Aylsham and Wroxham Stations. Running 9 miles through the beautiful Norfolk countryside the engines take you on a wonderful steam adventure to and from the Norfolk Broads. It's a perfect family day out and under 5s travel free!

Safety is their main priority and everyone will be allocated a reserved compartment to keep you and your loved ones safe, as well as sanitisation stations, masks worn around its stations and extra trains to avoid overcrowding.

Trains have been running daily since 1 July so to avoid disappointment book today at [bvrw.co.uk](http://bvrw.co.uk) and reserve your compartment.

Visit the UK's biggest and best dinosaur themed adventure park, ROARR! Dinosaur Adventure in Lenwade. New for 2021 at the 85-acre park is Dippy's Theatre bringing you the adventure filled Dippy's Movie time and live on stage, The Dippy and Friends show.

The new original stage production will take you on a brand new



adventure, with plenty of audience participation, laughs and fun for the whole family.

The park has over 25 ROARR-some attractions to discover, perfect for creating lasting family memories. A brand new ROARR! Discovery Pass can be purchased for the 2021 season – with plenty of ROARR-some discounts too. Find out more at [roarrdinosauradventure.co.uk](http://roarrdinosauradventure.co.uk)

## Shop local this summer

A new food and produce market has opened in Acle with stalls funded by a grant from Broadland District Council.

Angela Bishop, Parish Council Chairperson said: "The stalls will be so useful with regular markets through the summer on Thursdays, from afternoon to evening. A craft market and a Christmas Market is also being planned for the future. Acle Parish Council can also use the stalls for information events in the village and our charities, groups and clubs can use them for pop up events, to raise funds or for membership drives."



# Summer photo competition



**We really hope that you have a brilliant time enjoying all the wonderful things that Broadland has to offer this summer.**

**Send your snaps to [comms@broadland.gov.uk](mailto:comms@broadland.gov.uk)**

We would love to see what you've been doing so please send us a photo of where you've visited and you could win a great set of binoculars from London Camera Exchange.

London Camera Exchange, is an employee-owned business with 26 stores nationwide specialising in new and used photographic equipment, binoculars, telescopes and much more.

Please remember, if your pictures have members of your family or friends in them to make sure that we have their permission to publish the photo.

Your local branch can be contacted on 01603 612537 or email [norwich@LCEgroup.co.uk](mailto:norwich@LCEgroup.co.uk)

# Let's enjoy summer together

**As lockdown eases and the weather improves, we are all looking forward to getting outside to enjoy some much needed rest and relaxation and to meet up with friends and family in the garden.**

To avoid causing problems for your neighbours and to ensure we can all enjoy our outside spaces here are some tips on how to be a considerate neighbour:

- Think about any noise you are making and how it may impact on your neighbours. You are allowed to listen to music outside, but will your neighbour be able to hear it? A good way to check is to stand at the boundary of your property and see how loud it is. Also remember to lower the volume during the evening as you don't know what time your neighbours or their children may go to bed.

- Barbecues are great fun when the weather is nice, but make sure any smoke it produces does not drift across into neighbouring gardens, especially for prolonged periods.

- Garden bonfires are perfectly legal and are a convenient way to dispose of your garden rubbish, but they can be very antisocial. Think about the smoke it will generate and how it could blow towards your neighbour's house – not good if they have washing out or are enjoying some time in their garden like you. Consider purchasing a garden waste bin from us instead, at only £58.50 a year - it works out at less than £2.50 per emptying!

If you are affected by your neighbours' behaviour, why not knock on their door to discuss it, as quite often they will be unaware of the effect they are having on you. If you prefer, you can download our "Dear Neighbour" letter from our website which is a discreet way of raising a problem.

[southnorfolkandbroadland.gov.uk/downloads/download/560/dear-neighbour-letter](http://southnorfolkandbroadland.gov.uk/downloads/download/560/dear-neighbour-letter)

Have a lovely summer and remember, please be a good neighbour!

[southnorfolkandbroadland.gov.uk/garden-waste-composting/garden-waste-broadland](http://southnorfolkandbroadland.gov.uk/garden-waste-composting/garden-waste-broadland)



# Come and visit Broadland Country Park

**This summer visit our most ambitious green infrastructure project yet: Broadland Country Park.**

We understand the importance of open space to the health and wellbeing of our residents and we recently purchased 56 hectares of fen, heath and woodland to the North-West of Norwich which we are developing as a country park.

The park is a beautiful mosaic of heath, woodland and marshy grassland, perfect for walkers, horse riders and cyclists to explore and enjoy. Broadland Country Park changes with the seasons. In the spring you can find bluebells and primroses and in the summer butterflies and dragonflies can be seen along the woodland fringes. The park really is the perfect place to spend summer days with friends and family.

When autumn arrives and the light levels drop, the site turns purple as the heather starts to flower and the Sweet Chestnut

trees ripen. In the winter, bare Silver Birch trees create a striking contrast in the landscape.

Cllr Roger Foulger said: "We are very proud to have acquired this truly unique site for our community to explore and enjoy. Our investment in Broadland Country Park means that this wonderful community asset is safe for many years to come." In the 18th century, heathland



## Welcome to Broadland Country Park

A beautiful 140 acre mosaic of heath, woodland and marshy grassland, perfect for walkers, horse riders and cyclists to explore and enjoy. Broadland Country Park changes with the seasons. In the spring you can find bluebells and primroses, and in the summer butterflies and dragonflies can be seen along the woodland fringes. When autumn arrives and light levels drop, the site turns purple as the heather starts to flower and Sweet Chestnut trees ripen. In the winter, bare Silver Birch trees create a striking contrast in the landscape.

In the 18th century, heathland extended from Whinny Hills to the North Norfolk Coast, but as grazing regimes ceased, many of the plants unique to these heathlands were lost to the growth of unmanaged birch and gorse scrub.

Our teams are working hard to restore areas of this important heathland habitat. During your visit you may see volunteer groups working on site, as well as grazing animals to help control the areas of scrub.

You might also be lucky enough to see one of the UK's four indigenous reptile species: Common Lizard, Slow Worm, Grass Snake or Adder.

extended from Whinny Hills to the North Norfolk Coast, but as grazing regimes ceased, many of the plants unique to these heathlands were lost to the growth of unmanaged birch and gorse scrub. Groups of volunteers have been working hard over the winter months, strictly sticking to COVID-19 regulations, to restore areas of this important heathland habitat.

During your visit you may see volunteer groups working on site, as well as grazing Shetland cows, to help control areas of scrub. You might also be lucky enough to see one of the UK's six indigenous reptile species; common lizard, sand lizard, slow worm, smooth snake and grass snake or adder.

There are currently two main circular routes around the country park, the shorter route has a mix of broadleaf and conifer woodland and the longer route will take you to large areas of Sweet Chestnut trees with views across the heath.

For a flavour of the area, including some amazing aerial footage and more information, visit [southnorfolkandbroadland.gov.uk/broadlandcountrypark](https://southnorfolkandbroadland.gov.uk/broadlandcountrypark)

## A welcome to Reedham visitors

**In spring 2020 we completed an exciting regeneration project in Reedham to revitalise the village's historic riverside and encourage more people to visit local attractions at the heart of the Yare Valley.**

The project was funded by The European Agricultural Fund for Rural Development and supported by local volunteers and other key partner organisations.

Cllr Jo Copplestone said: "Reedham has so much to offer, but while visitors have long enjoyed the tranquil riverside scenery, many were unaware of other local attractions."

“One of the key aims of this project was to create clear signage to encourage people into the village to support our local businesses and tourist attractions.”  
Cllr Jo Copplestone

Just a short walk from the riverside, visitors can discover: Pettitt's Adventure Park, Humpty Dumpty Brewery, the village's three pubs (The Ship, The Lord Nelson and Reedham Ferry Inn), the Village Hall with play area, the Railway Station, the Victorian Swing Bridge, the historic Chain Ferry and the village church, which dates back to the 11th century.

There are also maps and new information boards that provide details about the local walking routes on offer.

As well as new signage, the funding also paid for new boat waste bin storage, national park

styled litter bins, new bike racks and planters.

Cllr Copplestone added: "With restrictions lifting, we are expecting a busy summer. We hope these new features will give Reedham's wonderful tourist attractions and other businesses a much-needed boost and help to grow the local economy - which is one of our key priorities."

[southnorfolkandbroadland.gov.uk/reedhamriverside](https://southnorfolkandbroadland.gov.uk/reedhamriverside)



EUROPEAN UNION  
European Regional Development Fund







# Community at Heart Awards 2021

**Nominations are open for the seventh annual Broadland Community at Heart Awards, celebrating the selfless work and incredible achievements in our communities.**

The awards give us a chance to say thanks to community heroes, and acknowledge the valuable contribution of volunteers, businesses, individuals or community groups to the district.

“There are many inspirational people in our community and these awards offer a chance to show appreciation for the efforts made by local heroes. We want to hear about the acts of kindness and generosity from people who go the extra mile in Broadland.” Cllr Shaun Vincent said.

John Warren, Partner, Price Bailey said: “I am really pleased that Price Bailey continue to sponsor the Broadland Community at Heart Awards for the fifth year. The awards are a great opportunity to recognise and celebrate some of the fantastic things businesses and individuals do for our local community. I am always truly humbled by the selflessness and commitment shown by the nominees and look forward to hearing their stories and meeting the winners at this year’s awards.”

Nominations open on 20 July 2021, and the categories this year are:

**Inspiration of the Year**

**Young Hero of the Year (aged 18 or under)**

**The Helping Hand Award**

**Business Community Support of the Year**

**Green at Heart Award**

**Community Group of the Year**

**Volunteer of the Year**

**Community Hero**

To nominate someone for a Community at Heart Awards please visit [southnorfolkandbroadland.gov.uk/communityatheart](https://southnorfolkandbroadland.gov.uk/communityatheart)

Nominations will close on 12 September.



## Keeping fit and having fun

The Marriott's Way 10k is back this year, with the popular event taking place in person once again, following last year's virtual race due to the pandemic.

Sponsored by Saffron Housing, the race will bring runners together on 3 October 2021, starting in Aylsham and travelling along Marriott's Way, before ending in Reepham marketplace with a lively celebration from spectators (restrictions allowing).

This will be the 13th year we have held the race, which is suitable for all abilities and raises money for Norfolk Trails, a charity that maintains the 26-mile long Marriott's Way footpath, cycle route and bridle way.

Entries open on 12 July and cost £15 per affiliated and £17 per non

affiliated person. It's limited to 500 places so make sure you book your place fast!

Vice Chairman Cllr John Fisher, said: “We are delighted that our Marriott's Way 10k can take place as normal this year. It has always been such a fantastic event and I look forward to residents joining in, cheering on participants as they complete the course, as they always do.”

James Francis, CEO of Saffron Housing Trust, added: “We are delighted to be working with Broadland District Council by sponsoring such a great, local event that will see lots of people get on their running shoes. If the last year has taught us anything, it's that keeping active is not only good for your physical health but also your mental wellbeing, and the Marriott's Way 10k race is a



great opportunity to challenge yourself, achieve something fantastic and contribute to a wonderful event.”

To enter, go to [southnorfolkandbroadland.gov.uk/mw10k](https://southnorfolkandbroadland.gov.uk/mw10k), and share your pictures from the day using #MarriottsOfFire.

Check out our Broadly Active Facebook page for information, tips and advice on physical activity, nutrition, mental health and wellbeing, as well as questions and challenges: [www.facebook.com/broadlyactive](https://www.facebook.com/broadlyactive).





# Lottery boosts local good causes

Since the first draw in February, 2021, Broadland's Community at Heart Lottery has raised more than £15,000 for good causes in the district.

More than 25,000 tickets have been purchased and over 450 winners to date have claimed either cash prizes, free tickets for future draws or in the case of one winner, a luxury hamper donated by Blofield Farm Shop to celebrate our first draw.

“We're thrilled to see people supporting our community lottery and getting behind causes that are close to their hearts”

Cllr Mancini-Boyle

“Our lottery will continue to provide funding for groups in a sustainable way – players can win prizes while money from ticket sales goes to local non-profit organisations,” said Cllr Trudy Mancini-Boyle, Deputy Leader of Broadland District Council.

So far 54 good causes have joined the lottery for free. One group benefiting is Norwich Door To Door. Its Funding and Community Engagement Manager, Kathleen Shirley, said: “We have been hugely affected by the pandemic, losing much-needed income from the events and community

fundraising opportunities that were cancelled. Funds received through the lottery help keep our buses on the road and our community connected.”

Taverham Band is also getting a boost and its Musical Director, Ian Colman MBE, said: “Like many clubs, Taverham Band has been unable to meet and perform for many months. With no income at all for that period, the money raised will help cover bills, buy new music and get back to playing in the coming months.”

The lottery is helping Friends of Hillside Primary and Nursery School. Its Fundraising Secretary Kimberley Greener said: “We are already making progress on our outside projects and have plans to get new ideas underway. It is making a significant difference to our cause but we are also



thrilled that our participation will benefit the needs of our wider community.”

Chairman of Bure Valley Youth Football Club, Ted McCarter, said: “As a youth football club we're always looking at ways of raising money to improve the experience for our youngsters. The lottery has been a great way to do this. Parents within the club have been supportive and we're looking to raise £1,800 over the first year. These funds will be used to update equipment and facilities within our club.”

Helena Mellor, Chair of St William's Association (raising money for St William's Primary School) said: “We love that the ticket sales not only support our own charity but other good



causes in our local community too. The set-up process was so quick and simple – it has been a fantastic way of raising vital funds for St William's Primary School.”

Broadland resident and volunteer Graham Charlish (above) won a Blofield Farm Shop luxury hamper in our first draw.

**If you want to register your good cause or you want to be in with a chance of winning up to £25,000 each week, visit [communityatheartlottery.com](https://communityatheartlottery.com)**

## Yours sincerely...

**The health and wellbeing of our residents is really important to us and we understand that many of our residents have found the recent lockdowns difficult.**

‘Yours sincerely’ is a new scheme run by our Help Hub to help people who may be feeling isolated or lonely. Each month we send recipients a friendly letter, full of useful information that will support their health and wellbeing and include recipe ideas, quizzes and other activities that will help promote a positive outlook. Receiving a friendly chatty letter can help people feel more connected to the outside world and the letters provide regular contact with lots of helpful ideas and suggestions.

Cllr Fran Whymark said: “Receiving a letter is really positive for your mental health and our letters aim to give our readers support, really useful advice and a little bit of company too. So if you'd like a change from the circulars and bills, let us know, and your letter could be arriving on your doormat soon.”

If you would you like to receive a monthly letter, or know of someone who may enjoy receiving a letter in the post, then please contact Laura Woollacott on [lwoollacott@s-norfolk.gov.uk](mailto:lwoollacott@s-norfolk.gov.uk) or call 01508 533816.

Thank you to East of England Co-op, Gutter Force, Big Sky Developments, Saffron Housing and Whittleby Parish who are sponsoring this scheme.



# New website launched

Our new joint website [southnorfolkandbroadland.gov.uk](https://southnorfolkandbroadland.gov.uk) has launched

As a Council we strive to work in a business-like way, looking for every opportunity to become more efficient as we deliver our services.

We have been working closely with South Norfolk Council for the past two years, sharing an officer team and looking at ways we can improve services and make savings to deliver maximum value for money.

The next major step in our collaborative journey is the launch of our new joint website which went live in June.

Whether you live in Broadland or South Norfolk, you will be able to find out all the information

you need and access our services quickly and easily at any time of the day or night.

“As a Council we want to offer our residents the best possible service, while giving them great value for money.”  
Cllr Jonathan Emsell

We have invested in a new website to improve how we deliver our services and make sure that our residents can engage with us at a time that suits them. We also want to ensure that our website is easy

to use and that information is easy to find. By moving with the times and working smartly and collaboratively, our new website is helping us to achieve this.

The new site features improved navigation, making accessing information even easier, a new website design that will work better on mobiles, tablets as well as desktop computers and a new My Account area that will give you information about the services that you access, all in one place.

To register for My Account visit our new website at: [southnorfolkandbroadland.gov.uk](https://southnorfolkandbroadland.gov.uk)

## Helping us to help you

Our website proved to be one of our most valuable tools in getting help to our residents and businesses throughout the COVID-19 pandemic. Our website helped us to keep residents informed about the latest safety measures and keep our local businesses updated about the different grants that were available and which sectors were eligible.

**10,000** online forms completed

**260,000** visits to the site

**5,000** page updates, keeping you informed

# Broadland's Design and Enhancement Awards

Take a look at our website and social media channels for information about our Design and Enhancement Awards, which launched on 19 July.

Our Design Award celebrates a new house or development that has been completed within the last two years. It will have made a positive contribution to its local area and the developers and designers will have made an exceptional effort to raise the design standard in Broadland.

Nominations are judged on their scale, design, use of sympathetic and sustainable materials and the way in which they sit with neighbouring properties or within the landscape.

Our Enhancement Award is for existing buildings that have been converted, altered, repaired or extended. The building must enhance the local area and the work to the building should respect the character scale, design and materials of, or represent a considerable improvement to the original building.

Cllr Sue Lawn, portfolio holder for Planning said: "Broadland is full of beautiful buildings and

architecture, both historical and modern. These awards enable us to celebrate and recognise the best designs and enhancements that have happened over the last two years."

In 2019 the Passive House at Weston Longville won the Design Award and the Enhancement Award went to the Octagon Barn in Little Plumstead.



## Business Awards

Businesses that have an operating base in Broadland and South Norfolk can nominate themselves for an award to celebrate their outstanding work and success.

Cabinet member, Jo Copplestone said: "It's been a challenging

18 months, so it's particularly important that we recognise achievements and reward the hard work and resourcefulness we've seen over the last year."

The winners will be announced at an awards ceremony in November

**FOSTERS**  
SOLICITORS LLP

2021 (subject to COVID-19 guidance).

To find out more, view the categories and how to nominate your own business please go to [southnorfolkandbroadland.gov.uk](https://southnorfolkandbroadland.gov.uk)



# Fly-tipping will not be tolerated in Broadland

**We live in a beautiful part of the world and, with your help, we want to keep it that way.**

Fly-tipping is selfish and harmful to the environment and wildlife, it blights our countryside and costs taxpayers over £50K a year to clean up. If you are caught fly-tipping, we will not hesitate to fine you.

In the last 12 months, the Council and our partners have carried out 57 fly-tipping investigations, resulting in fines for businesses and residents who have broken the law and blighted the countryside with their waste.

Cllr Judy Leggett, Portfolio holder for Environmental Excellence for Broadland District Council, said: "Fly-tipping is a serious offence, which could lead to prosecution. If you are suspicious, or the price quoted to remove your rubbish seems very cheap, decline the offer and opt for a reputable company instead."

**“** If your waste is found dumped you could be held liable and be issued with a fine, so don't risk it!  
Cllr Judy Leggett **”**

Recently, a mobile catering business was issued with a £300 fixed penalty notice for fly-tipping business waste in a lay-by. Not only did the owner have to pay the fixed penalty, but also had to pay for the waste to be removed by a licensed waste contractor. The owner was also advised on how to dispose of waste properly and legally in the future.

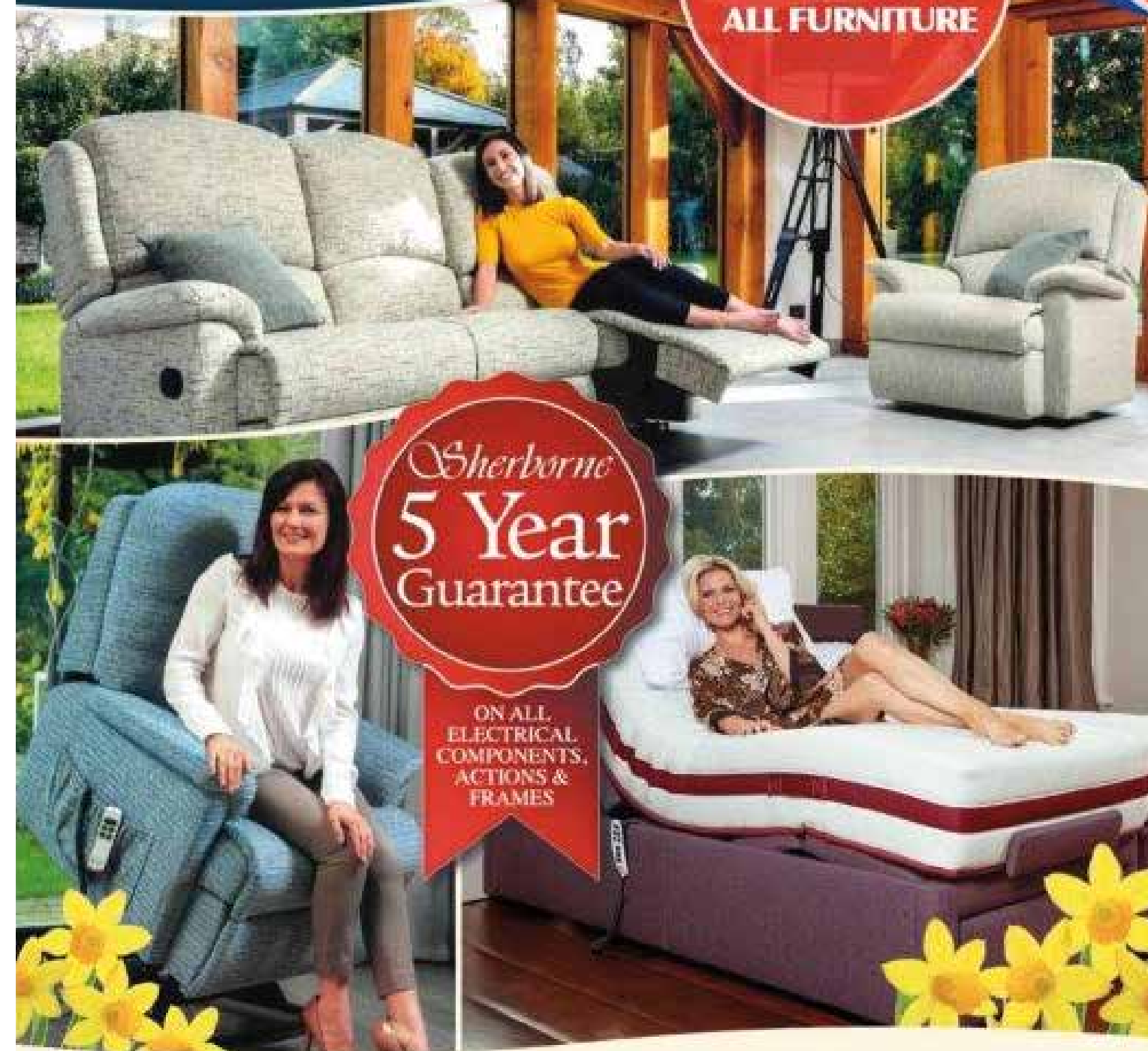
And it's not just the people that fly-tip that are at risk of receiving a fine. Householders have a responsibility to ask anyone offering to clear their waste where they are going to be taking it and to ensure they are a licensed waste handler.

In April, a homeowner was issued with a £300 fixed penalty notice after handing over her household waste to an unlicensed waste carrier. The waste was later found fly-tipped in a ditch. The Council advised her on what she must do to get rid of her waste properly in the future.

**You can report fly-tipping in Broadland here:**  
[southnorfolkandbroadland.gov.uk/fly-tipping](http://southnorfolkandbroadland.gov.uk/fly-tipping)

## Parker Knoll SHERBORNE

**20% OFF  
ALL FURNITURE**



**DOVETAIL**  
Norwich's Home  
Furnishing Superstore

Home selection available - Easy access to our showroom  
Registered disabled? Pay no VAT! - Chairs available in four sizes  
Free delivery and disposal of old furniture

**Telephone 01603 488082**  
See more ranges on [www.dovetail-furniture.co.uk](http://www.dovetail-furniture.co.uk)  
226-236 Sprowston Road, Norwich, Norfolk

**BEST PRICES IN NORFOLK GUARANTEED**



**foster for**  
the hugs  
you give

**Norfolk**  
fostering

Squeeeeze



The smiles you share, the hugs you give, the giggles you get and the difference you make. These are the reasons you open your heart and your home and choose to foster.

Help a child fulfil their true potential

Text **fostering** to **87222**

Call 01603 306649  
[norfolk.gov.uk/fostering](http://norfolk.gov.uk/fostering)

Texts cost one standard network rate message

**Norfolk**  
County Council

**GARDEN ROOM designs**

Garden rooms designed and built to inspire

- Garden Rooms • Orangeries
- Conservatory Insulation
- Re-roofing Systems • Free Standing Garden Offices

Contact us for free consultation & quotation  
**01603 720005**



**www.gardenroomdesigns.co.uk**

## Business & IP Centre Norfolk



Marcela Livingston, Leeds  
Sacpot



## Making every day special

You can be reassured with NorseCare. Our homes are vibrant and active communities where we provide people with rich, fulfilling lives and personalised care in a welcoming environment.

**For more information about our homes in Norwich, please call: 01603 894366**

[norsecare.co.uk/ellacombe](http://norsecare.co.uk/ellacombe)  
[norsecare.co.uk/mayflowercourt](http://norsecare.co.uk/mayflowercourt)  
[norsecare.co.uk/mountfield](http://norsecare.co.uk/mountfield)

Residential, dementia & nursing care homes

## FOR EVERY BRIGHT IDEA, EVERYWHERE

Join a thriving business community  
in your local library. Nurture your ambitions  
and plan for a bright future.



The British Library's National Network of library-based Business & IP Centres is transforming the way ideas grow into successful businesses. Offering advice and access to free resources, training and events, we'll help you imagine, start or develop your business. Whether you're just setting out, need advice on protecting your intellectual property, or simply have a brilliant idea you want to discuss, the Business & IP Centre Norfolk is here to guide you.

Find us at Wroxham Library or online at  
[norfolk.gov.uk/bipcnorfolk](http://norfolk.gov.uk/bipcnorfolk)



# GUTTER FORCE

TAKING CLEANING TO A HIGHER LEVEL

## VACUUM GUTTER CLEANING

BARGE BOARD, FASCIA AND GUTTER WASHING

GUTTERS • FASCIAS

CONSERVATORY  
CLEANING

WINDOWS • SOFFITS

FULL GUTTER REPAIR,  
REPLACEMENT AND  
MAINTENANCE

PATIO CLEANING

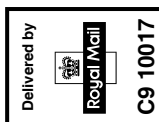
SAFE • EFFICIENT • PROFESSIONAL

- RESIDENTIAL AND COMMERCIAL PROPERTIES
- CAMERA SURVEY OF GUTTERS BEFORE AND AFTER
- FRIENDLY LOCAL COMPANY
- FREE QUOTES - NO OBLIGATION



**01508  
490999**

[www.gutter-force.co.uk](http://www.gutter-force.co.uk)



If this item is undelivered or for postal address:  
Broadland District Council, Thorpe Lodge, 1 Yarmouth Rd, Norwich NR7 0DU

Top quality from a local manufacturer  
**Est. 1985**

# Eastern Windows

WINDOWS DOORS CONSERVATORIES

Good looking, versatile and very strong  
CALL FREEPHONE  
**0800 5421039**

We have a great reputation for care and pride in our work.

Straightforward no nonsense quotations from the owners.

'A' rated fully guaranteed windows.

Very competitive prices - no deposit required

[www.easternwindowsanddoors.co.uk](http://www.easternwindowsanddoors.co.uk)

t: 01603 716022/713845 e: [contact@easternwindowsanddoors.co.uk](mailto:contact@easternwindowsanddoors.co.uk)  
Bells Boatyard Brundall Norwich NR13 5QA

## Contact Care

Personal Lifeline Alarms

A Contact Care lifeline provides you with help and reassurance at the touch of a button

Installed by us throughout East Anglia

Just £3.70 a week & an installation fee of £40

**0800 917 4680**

Saffron Housing Trust