

Electoral Arrangements Committee

Agenda

Date

Wednesday 29 January 2020

Time

6.00pm

Place

Trafford Room
Thorpe Lodge
1 Yarmouth Road
Thorpe St Andrew
Norwich

Contact

James Overy tel (01603) 430540

Broadland District
Council
Thorpe Lodge
1 Yarmouth Road
Thorpe St Andrew
Norwich NR7 0DU

E-mail: james.overy@broadland.gov.uk



@BDCDemServices

The Openness of Local Government Bodies Regulations 2014

Under the above Regulations, any person may take photographs, film and audio-record the proceedings and report on all public meetings. If you do not wish to be filmed / recorded, please notify an officer prior to the start of the meeting. The Council has a protocol, a copy of which will be displayed outside of each meeting room and is available on request.

A G E N D A

Page No

1 To receive declarations of interest under Procedural Rule no 8

2 Apologies for absence

3 [Polling District and Places Review 2019/20](#)

5

To undertake a review of the polling districts and polling places.

Trevor Holden
Managing Director

DECLARATIONS OF INTEREST AT MEETINGS

When declaring an interest at a meeting Members are asked to indicate whether their interest in the matter is pecuniary, or if the matter relates to, or affects a pecuniary interest they have, or if it is another type of interest. Members are required to identify the nature of the interest and the agenda item to which it relates. In the case of other interests, the member may speak and vote. If it is a pecuniary interest, the member must withdraw from the meeting when it is discussed. If it affects or relates to a pecuniary interest the member has, they have the right to make representations to the meeting as a member of the public but must then withdraw from the meeting. Members are also requested when appropriate to make any declarations under the Code of Practice on Planning and Judicial matters.

Have you declared the interest in the register of interests as a pecuniary interest? If Yes, you will need to withdraw from the room when it is discussed.

Does the interest directly:

1. Affect yours, or your spouse / partner's financial position?
2. Relate to the determining of any approval, consent, licence, permission or registration in relation to you or your spouse / partner?
3. Relate to a contract you, or your spouse / partner have with the Council
4. Affect land you or your spouse / partner own
5. Affect a company that you or your partner own, or have a shareholding in

If the answer is "yes" to any of the above, it is likely to be pecuniary.

Please refer to the guidance given on declaring pecuniary interests in the register of interest forms. If you have a pecuniary interest, you will need to inform the meeting and then withdraw from the room when it is discussed. If it has not been previously declared, you will also need to notify the Monitoring Officer within 28 days.

Does the interest indirectly affect or relate any pecuniary interest you have already declared, or an interest you have identified at 1-5 above?

If yes, you need to inform the meeting. When it is discussed, you will have the right to make representations to the meeting as a member of the public, but must then withdraw from the meeting.

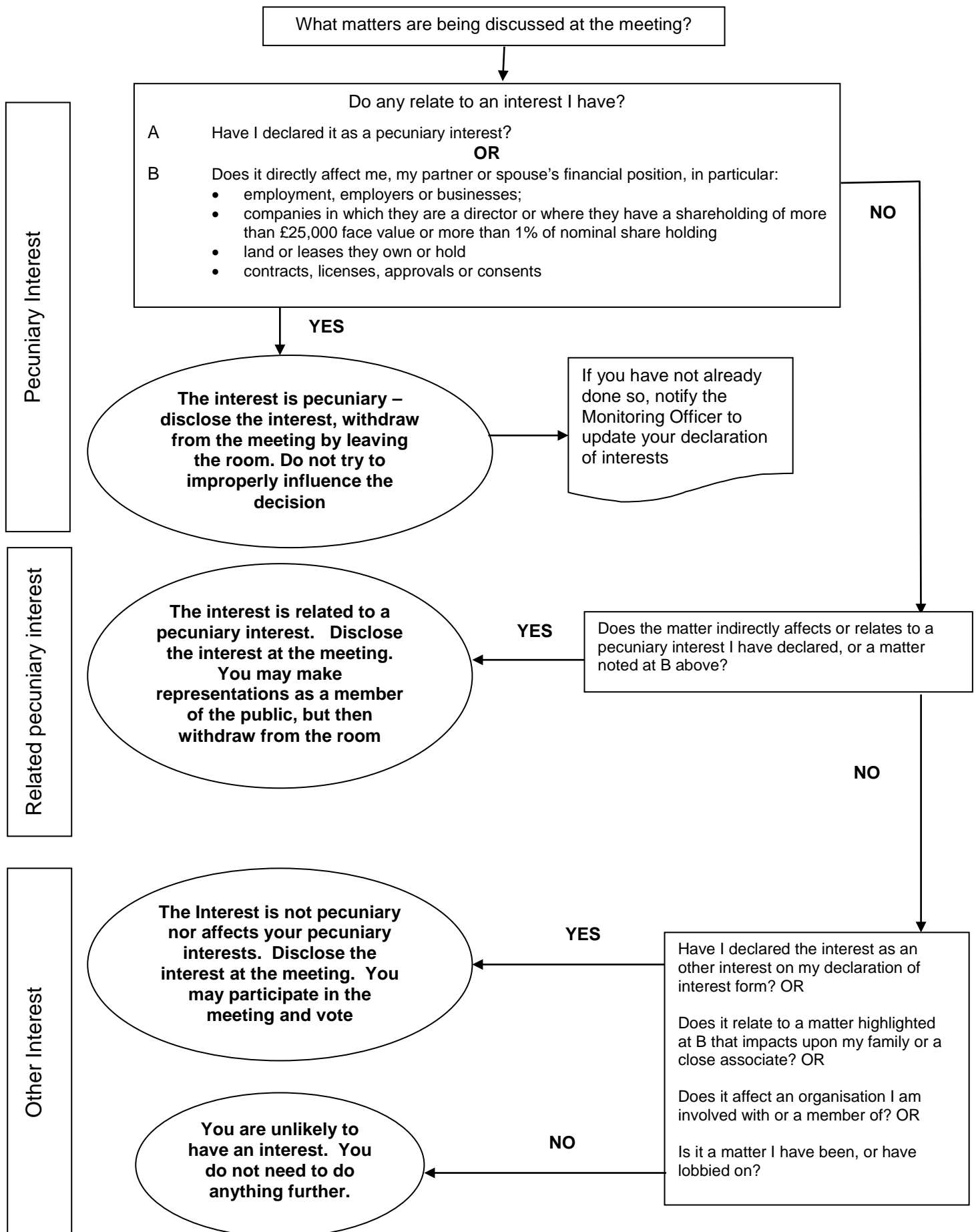
Is the interest not related to any of the above? If so, it is likely to be another interest. You will need to declare the interest, but may participate in discussion and voting on the item.

Have you made any statements or undertaken any actions that would indicate that you have a closed mind on a matter under discussion? If so, you may be predetermined on the issue; you will need to inform the meeting, and when it is discussed, you will have the right to make representations to the meeting as a member of the public, but must then withdraw from the meeting.

FOR GUIDANCE REFER TO THE FLOWCHART OVERLEAF

PLEASE REFER ANY QUERIES TO THE MONITORING OFFICER IN THE FIRST INSTANCE

DECLARING INTERESTS FLOWCHART – QUESTIONS TO ASK YOURSELF



Agenda Item: 3

**Electoral Arrangements Committee
29 January 2020**

POLLING DISTRICT AND PLACES REVIEW 2019/20

Report Authors:	Linda Mockford, Electoral Services Manager T: 01603 430424 E: linda.mockford@broadland.gov.uk
Portfolio Holder:	Policy
Wards Affected:	All
Purpose of the Report:	The Council is required to undertake and complete a review of all polling districts and polling places by 31 January, 2020. This report advises on the process and decisions required.

Recommendations:

1. To note the outcome of the consultation of the review of polling district and places.
2. To formally consider the representations received for alternative proposals and the responses made by the Acting Returning Officer (ARO), including updated comments following the recent Parliamentary election.
3. To keep existing arrangements in place except for the following:

BC1 (Blofield) - use the Court House, Yarmouth Road, Blofield.

BD4 (Strumpshaw) – use the new Community Hall, Mill Road, Strumpshaw.

BY2 (Rackheath) – continue to use the Church Centre but use the smaller room so that the community groups can still operate.

HC1 (Hellesdon NW) – use the Community Centre, Wood View Road for higher turnout elections and the Parish Council Chamber for lower turnout

elections (RO makes the decision for each election).

HL1 - Thorpe St Andrew SE - make a small change to the southern boundary of the polling district so that it includes the small row of houses before the railway line.

4. To monitor the following polling places, in case more suitable alternative polling places become available:

HE3 (Sprowston West) – continue to investigate whether there are any alternative polling places within the polling district, including the possibility of using a mobile unit.

HF1 (Sprowston Central) – if it is available and suitable, to consider the use of Sprowston Methodist Church, instead of the Senior Citizens Club.

HK1 (Thorpe St Andrew NW) – investigate whether the St Andrews Football Clubhouse premises is suitable as a polling station or whether it will be possible to use a room/ building in Thorpe High School, if a suitable one becomes available.

1 SUMMARY

- 1.1 Every Council is required to undertake and complete a review of all polling districts and polling places within its administrative boundary at least once every five years. The last review took place in 2014/15.
- 1.2 This report sets out the process for the latest review which must be completed by 31 January, 2020.

2 BACKGROUND

- 2.1 Section 17 of the Electoral Administration Act 2013 introduced a duty to review all polling districts and polling places within 16 months of 1 October 2013 and every five years thereafter.
- 2.2 **A Polling district** is the geographical area created by sub-dividing an electoral area. Each parish is to be a separate polling district, unless special circumstances apply.
- 2.3 **A Polling place** is the designated area for a polling district in which a polling station is located. The Council must designate a polling place for each polling district, unless the size or other circumstances of a polling district are such that the situation of the polling station does not materially affect the convenience of voters.

The polling place must be an area in the district, unless special circumstances make it desirable to designate an area wholly or partly outside the district (for example, if no accessible polling place can be identified in the district).

- 2.4 **A Polling station** is the actual area where the process of voting takes place, e.g. a room in a community centre or school.
- 2.5 The Electoral Commission (EC) guidance recommends that not more than 2,500 electors are allocated to a polling station.

Twelve polling places in the district currently have in excess of, or almost, 2,500 electors allocated; therefore, in line with EC guidance, two stations are allocated in these areas (i.e. the electoral register is split and two teams of staff are responsible for less than 2,500 electors each).

- 2.6 As part of the review, local authorities must seek to ensure that all electors in a constituency in its area have such reasonable facilities for voting as are practicable in the circumstances and seek to ensure that, so far as is reasonable and practicable, the polling places they are responsible for are accessible to all electors, including those who are disabled and when considering the designation of a polling place, must have regard to the accessibility needs of disabled persons.
- 2.7 The review cannot consider changes to parish, ward boundaries, divisions or parliamentary constituencies.

- 2.8 The last review was undertaken in 2014/15 and the current review must be completed by 31 January, 2020.

3 FINDINGS

- 3.1 The consultation responses of the current review, were due to be considered by the Electoral Arrangements Committee in November, so any changes could be implemented when the new register of electors was published on 1 December. However, due to the snap Parliamentary election, the register had to be published early and the review was postponed.

The amended timetable for the review process is set out below:

May – June 2019	Review polling station inspector record sheets following the District and European elections in May 2019. Preliminary discussions with the Returning Officer on possible changes needed to the existing arrangements.
10 July 2019 – 21 August 2019	Consult for representations and comments on the existing and proposed (if any) arrangements.
26 – 5 September 2019	Consider all the representations and alternative proposals. Produce proposals for Council to consider.
17 September 2019	Council delegated responsibility for polling district reviews by appointing an Electoral Arrangements Committee. It was recommended to keep existing polling districts and places except for HE3, HF1, HG2 and HK1 where it was suggested that further investigations were required and recommended a small change to the boundary of HL1, as suggested in the report.
October 2019	Electoral Arrangements Committee which had been arranged for 13 November had to be cancelled due to the snap Parliamentary election.
8 November 2019	Register of electors published early, due to the parliamentary election.
12 December 2019	Parliamentary election. Further inspections carried out at all polling stations.

29 January 2020	Electoral Arrangements Committee to consider consultation responses and ARO responses, including further comments following the parliamentary election and decide on the most appropriate districts and places.
31 January 2020	Review to be implemented.

- 3.2 Existing polling arrangements which were agreed by Council in 2015 were used as the starting point for the current review. Views of election staff, polling station inspectors and voters were also taken into account following the Broadland District Council elections and European Parliamentary elections in May 2019. No complaints have been recorded about the use or accessibility of any stations used for these, or previous, elections.
- 3.3 The Acting Returning Officer is required to comment on the existing Polling Places and using feedback from the May elections, was satisfied with all existing arrangements but had suggested that a slight boundary change might be needed at polling district HK1 - Thorpe St Andrew NW - due to the location of the existing polling station (St Andrews Centre) which is outside the polling district. The Adult Training Centre was previously used as a polling station in this area, but when this became unavailable, an alternative venue needed to be found. Initially, the Cottage bar and restaurant was used but this hasn't been available for snap elections.
- 3.4 A number of stakeholders were also consulted on this review, including all Members, parish/town councils and parish meetings, and political parties and agents. Details were also published on the Council's website.
- 3.5 A list of the existing arrangements and comments/proposals received during the consultation period, together with a response to the proposals are attached at Appendix 1.

No adverse comments or alternative proposals were received for any polling stations in the Broadland Constituency.

However, the Labour Party suggested that the following polling districts in Norwich North constituency should be split so that two different polling stations are allocated, rather than splitting the stations:

Hellesdon (HC1 and HD1)
 Sprowston Central (HF1) and Sprowston East (HG2)
 Thorpe St Andrew NW (HK1):

The Labour Party, a ward councillor and a Sprowston town councillor also said that the polling station for Sprowston West (HE3) was unsuitable as it not located in the polling district.

A Thorpe St Andrew ward and town councillor suggested looking for an alternative polling station in the HK1 polling district.

- 3.6 On 17 September, 2019, Council delegated the decision on this and other reviews by appointing an Electoral Arrangements Committee. However, the Committee meeting which was arranged for 13 November had to be cancelled due to the snap Parliamentary election.
- 3.7 The Parliamentary election was held on 12 December, 2019. Further inspections of all polling stations were carried out and additional ARO comments have been included on Appendix 1, if applicable.
- 3.8 Since the district elections, some polling places have become unavailable to use as polling stations.

Margaret Harker Hall in Blofield - St Andrew and St Peter Church was used at the European election and the Court House was used at the Parliamentary election. The Court House is a good venue and is in a good location.

Church Centre at Rackeath – Rackheath Village Hall was used for the European and Parliamentary elections. Complaints were received during the Parliamentary election regarding the location and its accessibility.

The Strumpshaw Parish Rooms will no longer be available from February 2020 and is being replaced by a new community hall.

4 PROPOSED ACTION

- 4.1 After considering all of the representations, including the additional comments of the ARO following the parliamentary election, it is not considered necessary to alter any polling districts at this time (other than HL1 – see 4.2 below) and to continue splitting polling stations at those polling places that have more than 2,500 electors .
- 4.2 Whilst looking at polling district maps, a change to HL1 (Thorpe St Andrew SE) seems sensible. A small change to the southern boundary of the polling district is suggested, to include the small row of houses before the railway line. This would mean that electors could vote at the Dussindale Centre rather than Roxley Hall.
- 4.2 It is not considered necessary to change any existing polling places other than the following:
 - BC1 (Blofield) - where it is recommended to use the Court House.
 - BD4 (Strumpshaw) – where is recommended to use the new Community Hall.
- 4.3 It is suggested that the Church Centre, Rackheath continues to be used but a smaller room be used so that the community groups can continue to operate at the venue.

- 4.4 For Hellesdon North West, it is recommended to use either the Community Centre or the Parish Council Chamber, depending on the election and anticipated turnout. Such decision should be made by the Returning Officer.

5 OTHER OPTIONS

- 5.1 Divide the larger polling districts into two areas, although this is not a practical solution unless suitable polling places can be found in both polling districts. However, this situation can be kept under review as polling district boundaries can be changed, if necessary, before the next five year formal review.

6 ISSUES AND RISKS

- 6.1 Polling districts and polling places must be designated in accordance within the relevant legislation.
- 6.2 **Resource implications** – if polling districts are split and additional polling stations are used, this will have an impact on costs, as polling station hiring costs will increase.
- 6.3 **Legal implications** – The Council has a legal duty to divide its area into suitable polling districts and polling places. The Returning Officer has a duty to provide a sufficient number of polling stations and allot electors to them. It is a requirement of the Electoral Registration Act 2013 to review polling districts and places and to carry out regular reviews as prescribed.
- 6.4 **Equality implications** – The Council has a duty to review the accessibility of all polling places to disabled voters and ensure that every polling place is accessible to disabled voters ‘so far as is reasonable and practicable’.
- 6.5 **Environmental impact** – no impact identified.
- 6.6 **Crime and disorder** – no impact identified.
- 6.7 **Risks** – no other risks identified.

7 CONCLUSION

- 7.1 In the absence of any recorded complaints or issues arising from previous elections, the existing polling districts and polling places appear, in the main, to be satisfactory. 2019 was an exceptional year for elections, with three major elections taking place and there were no complaints about any of the stations from voters (other than Rackheath Village Hall).
- 7.2 Some polling places are situated outside the relevant polling districts. Ideally, polling places should be located within polling districts; however, this is not always achievable especially in small parishes.
- 7.3 There are currently twelve polling places in the district that have more than, or have almost 2,500 electors allocated; five in the Broadland constituency and seven in the Norwich North constituency. However, in line with EC guidance

these places are split into two stations.

8 RECOMMENDATIONS

8.1 To note the outcome of the consultation of the review of polling district and places.

8.2 To formally consider the representations received for alternative proposals and the responses made by the Acting Returning Officer (ARO), including updated comments following the recent Parliamentary election.

8.3 To keep existing arrangements in place except for the following:

BC1 (Blofield) - use the Court House, Yarmouth Road, Blofield.

BD4 (Strumpshaw) – use the new Community Hall, Mill Road, Strumpshaw.

BY2 (Rackheath) – continue to use the Church Centre but use the smaller room so that the community groups can still operate.

HC1 (Hellesdon NW) – use the Community Centre, Wood View Road for higher turnout elections and the Parish Council Chamber for lower turnout elections (RO makes the decision for each election).

HL1 - Thorpe St Andrew SE - make a small change to the southern boundary of the polling district so that it includes the small row of houses before the railway line.

8.4 To monitor the following polling places, in case more suitable alternative polling places become available:

HE3 (Sprowston West) – continue to investigate whether there are any alternative polling places within the polling district, including the possibility of using a mobile unit.

HF1 (Sprowston Central) – if it is available and suitable, to consider using Sprowston Methodist Church, instead of the Senior Citizens Club.

HK1 (Thorpe St Andrew NW) – investigate whether the St Andrews Football Clubhouse premises is suitable as a polling station or whether it will be possible to use a room/ building in Thorpe High School, if a suitable one becomes available.

Background Papers

Schedule of Existing Arrangements

Polling Station Evaluation Reports

BROADLAND PARLIAMENTARY CONSITITUENCY

POLLING DISTRICT	POLLING PLACE	ELECTORATE	BROADLAND DISTRICT/WARD	COMMENTS RECEIVED	ARO RESPONSE TO COMMENTS IF PROPOSED CHANGES/PLUS FURTHER COMMENTS FOLLOWING THE PARLIAMENTARY ELECTION
BA1	WAR MEMORIAL RECREATION CENTRE, BRIDEWELL LANE, ACLE	2248	ACLE	ARO - no change considered necessary	
BB1 BB2	AYLSHAM TOWN HALL MARKET PLACE AYLSHAM	5684 85	AYLSHAM	ARO - this station is split due to the high number of electors in Aylsham. No building available in BB2 - Blickling. No change considered necessary	
BB3	READING ROOM CHURCH LANE BURGHE NEXT AYLSHAM	256	AYLSHAM	ARO - no change considered necessary	
BB4	MARSHAM VILLAGE HALL HIGH STREET MARSHAM	536	AYLSHAM	ARO - no change considered necessary	
BB5	OULTON CHAPEL OULTON	158	AYLSHAM	ARO - no change considered necessary	
BC1	MARGARET HARKER HALL YARMOUTH ROAD BLOFIELD	1920	BLOFIELD WITH SOUTH WALSHAM	ARO - no change considered necessary	Couldn't use Hall at the European election (used the Church instead) or the Parliamentary election (used the Court House). Margaret Harker Hall has a regular booking on Thursdays; therefore, they would rather the Court House is used instead. Court House is suitable and in a good location.
BC2 BC3	HEATHLANDS COMMUNITY CTR. WOODBASTWICK ROAD BLOFIELD	1006 293	BLOFIELD WITH SOUTH WALSHAM	ARO – No building available in BC3 - Hemblington. No change considered necessary	
BC4	SOUTH WALSHAM VILLAGE HALL SCHOOL LANE SOUTH WALSHAM	645	BLOFIELD WITH SOUTH WALSHAM	ARO - no change considered necessary	
BC5	UPTON VILLAGE HALL CARGATE LANE UPTON	588	BLOFIELD WITH SOUTH WALSHAM	ARO - no change considered necessary	
BC6	RANWORTH VILLAGE HALL BROAD ROAD RANWORTH	309	BLOFIELD WITH SOUTH WALSHAM	ARO - no change considered necessary	
BD1	MEMORIAL HALL LINKS AVENUE BRUNDALL	3450	BRUNDALL	ARO - this station is split due to the high number of electors. No change considered necessary.	

POLLING DISTRICT	POLLING PLACE	ELECTORATE	BROADLAND DISTRICT/WARD	COMMENTS RECEIVED	ARO RESPONSE TO COMMENTS IF PROPOSED CHANGES/PLUS FURTHER COMMENTS FOLLOWING THE PARLIAMENTARY ELECTION
				Chairman of Brundall Parish Council: Memorial Hall works for everyone as far as I know is central to village and is preferred to the school (which would have to close for the day) so I suggest we are ok in Brundall	
BD2	CANTLEY VILLAGE HALL MANOR ROAD CANTLEY	579	BRUNDALL	ARO - no change considered necessary	
BD3	POSTWICK VILLAGE HALL FERRY LANE POSTWICK	299	BRUNDALL	ARO - no change considered necessary	
BD4	STRUMPSHAW PARISH ROOMS BARN HILL STRUMPSHAW	486	BRUNDALL	ARO - no change considered necessary Parish Clerk: Strumpshaw Parish Council confirmed that they are happy with the current polling district and polling venue, hoping to have a new hall to use from Summer 2020.	
BE1	VILLAGE HALL STATION ROAD LINGWOOD	2114	BURLINGHAM	ARO - no change considered necessary	
BF1	BRAMPTON VILLAGE HALL THE STREET BRAMPTON	147	BUXTON	ARO - no change considered necessary	
BF2	BUXTON VILLAGE HALL CHURCH CORNER BUXTON	1304	BUXTON	ARO - no change considered necessary	
BF3	FRETtenham VILLAGE HALL CHURCH ROAD FRETtenham	618	BUXTON	ARO - no change considered necessary	
BG1	CHURCH ROOM RECTORY ROAD COLTISHALL	1176	COLTISHALL	ARO - no change considered necessary	
BG2 BG3	TITHE BARN RECTORY ROAD HORSTEAD	50 863	COLTISHALL	ARO – No building available in BG2 - Crostwick. No change considered necessary	
BH1	THORPE MARRIOTT VILLAGE HALL THE SQUARE THORPE MARRIOT	2208	DRAYTON NORTH	ARO - no change considered necessary	
BJ1	DRAYTON VILLAGE HALL POUND LANE DRAYTON	1979	DRAYTON SOUTH	ARO - no change considered necessary	
BK1	CAWSTON VILLAGE HALL HIGH STREET CAWSTON	1218	EYNESFORD	ARO - no change considered necessary	
BK2 BK3	NEW FROST HALL CLAYPIT ROAD	774 54	EYNESFORD	ARO – No building available in BK3 - Themelthorpe. No change considered	

POLLING DISTRICT	POLLING PLACE	ELECTORATE	BROADLAND DISTRICT/WARD	COMMENTS RECEIVED	ARO RESPONSE TO COMMENTS IF PROPOSED CHANGES/PLUS FURTHER COMMENTS FOLLOWING THE PARLIAMENTARY ELECTION
	FOULSHAM			necessary	
BK4	GUESTWICK VILLAGE HALL OLD SCHOOL ROAD	105	EYNESFORD	ARO - no change considered necessary	
BK5 BK6	HEYDON PARISH ROOM THE STREET HEYDON	104 67	EYNESFORD	ARO – No building available in BK6 -Salle. No change considered necessary	
BK7	WOOD DALLING VILLAGE HALL GUESTWICK ROAD WOOD DALLING	173	EYNESFORD	ARO - no change considered necessary	
BL1 BL2 BL3	WESTON LONGVILLE VILLAGE HALL CHURCH STREET WESTON LONGVILLE	108 78 255	GREAT WITCHINGHAM	ARO – No buildings available in BL1 – Attlebridge and BL2 – Morton on the Hill. No change considered necessary	
BL4 BL5 BL6 BL7 BL8 BL9	SWANNINGTON CHURCH ROOM CHURCH LANE SWANNINGTON	38 100 60 225 27 244	GREAT WITCHINGHAM	ARO – No buildings available in BL4 – Alderford, BL5 – Booton, BL6 – Brandiston, BL7 – Haveringland and BL8 – Little Witchingham. No change considered necessary	
BL10	GT WITCHINGHAM VILLAGE HALL HUBBARDS LOKE GT WITCHINGHAM	508	GREAT WITCHINGHAM	ARO - no change considered necessary	
BL11	HONINGHAM VILLAGE HALL HONINGHAM	290	GREAT WITCHINGHAM	ARO - no change considered necessary	
BL12	VILLAGE HALL THE STREET RINGLAND	177	GREAT WITCHINGHAM	ARO - no change considered necessary	
BM1	HAINFORD VILLAGE HALL HALL ROAD HAINFORD	819	HEVINGHAM	ARO - no change considered necessary	
BM2	HEVINGHAM VILLAGE HALL BRICK KILN ROAD HEVINGHAM	958	HEVINGHAM	ARO - no change considered necessary Parish Clerk: You currently use our Village Hall as a polling station and this is really the only place in the Village we have. Having said that, the hall has more than ample parking, is easily accessible to all and has good facilities so it is really an ideal location.	
BM3	BURROUGHS HALL PARISH ROAD STRATTON STRAWLESS	477	HEVINGHAM	ARO - no change considered necessary	
BN1	FELTHORPE PAVILION THE STREET FELTHORPE	575	HORSFORD & FELTHORPE	ARO - no change considered necessary Councillor Dave Thomas: Both Horsford and Felthorpe are ok for their polling station positions. No changes needed in my view	

POLLING DISTRICT	POLLING PLACE	ELECTORATE	BROADLAND DISTRICT/WARD	COMMENTS RECEIVED	ARO RESPONSE TO COMMENTS IF PROPOSED CHANGES/PLUS FURTHER COMMENTS FOLLOWING THE PARLIAMENTARY ELECTION
BN2	HORSFORD VILLAGE HALL HOLT ROAD HORSFORD	1739	HORSFORD & FELTHORPE	ARO - no change considered necessary Councillor Dave Thomas: Both Horsford and Felthorpe are ok for their polling station positions. No changes needed in my view, Kate Chubb: Current facilities at the school hall seem fine for polling. Bit of a walk for those who are less mobile and who do not drive although postal voting is possible.	
BP1	BEIGHTON VILLAGE HALL HIGH ROAD BEIGHTON	349	MARSHES	ARO - no change considered necessary Cllr Grant Nurden: I have no comments to make on the stations in the Marshes ward as these have been excellent locations and accessible to the majority of residents. Three of the villages would have to use a car or public transport to get to the station, namely Moulton St Mary, Tunstall, and Wickhampton.	
BP2	FREETHORPE VILLAGE HALL SCHOOL ROAD FREETHORPE	739	MARSHES	ARO - no change considered necessary Cllr Grant Nurden: I have no comments to make on the stations in the Marshes ward as these have been excellent locations and accessible to the majority of residents. Three of the villages would have to use a car or public transport to get to the station, namely Moulton St Mary, Tunstall, and Wickhampton	
BP3	HALVERGATE PLAYING FIELD CLUB WICKHAMPTON ROAD HALVERGATE	459	MARSHES	ARO - no change considered necessary Cllr Grant Nurden: I have no comments to make on the stations in the Marshes ward as these have been excellent locations and accessible to the majority of residents. Three of the villages would have to use a car or public transport to get to the station, namely Moulton St Mary, Tunstall, and Wickhampton Parish Clerk: The current Polling Station used for in Elections in Halvergate, i.e. the Playing Field Pavilion, is more than adequate in serving this purpose. It has plenty of parking space, is easily accessible to villagers and is the most logical place in Halvergate to hold	

POLLING DISTRICT	POLLING PLACE	ELECTORATE	BROADLAND DISTRICT/WARD	COMMENTS RECEIVED	ARO RESPONSE TO COMMENTS IF PROPOSED CHANGES/PLUS FURTHER COMMENTS FOLLOWING THE PARLIAMENTARY ELECTION
				Election Polls.	
BP4	REEDHAM VILLAGE HALL POTTLES LANE REEDHAM	908	MARSHES	ARO - no change considered necessary Cllr Grant Nurden: I have no comments to make on the stations in the Marshes ward as these have been excellent locations and accessible to the majority of residents. Three of the villages would have to use a car or public transport to get to the station, namely Moulton St Mary, Tunstall, and Wickhampton	
BR1	GREAT PLUMSTEAD VILLAGE HALL CHURCH ROAD	305	PLUMSTEAD	ARO - no change considered necessary	
BR2	LITTLE PLUMSTEAD VILLAGE HALL CROWES LOKE LITTLE PLUMSTEAD	1265	PLUMSTEAD	ARO - no change considered necessary	
BR3	THORPE END VILLAGE HALL PLUMSTEAD ROAD THORPE END	964	PLUMSTEAD	ARO - no change considered necessary	
BS1	THE BIRCHAM CENTRE THE MARKET PLACE REEPHAM	2109	REEPHAM	ARO - no change considered necessary Town Clerk Response: Currently the Bircham Centre is used as a polling station for Reepham. As this is located in the Market Place, it is central to town, has disability access and there is parking for people in the Market Place. Although there are other community buildings available, I think that the Bircham remains the best all round location. I wouldn't consider another location unless the Bircham was unavailable.	
BT1 BT2	SPIXWORTH VILLAGE HALL CROSTWICK LANE SPIXWORTH	23 2963	SPIXWORTH WITH ST FAITHS	ARO - this station is split due to the high number of number of electors in Spixworth. No building available in BT1 – Beeston St Andrew. No change considered necessary	
BT3	ST FAITHS CENTRE NEWTON ST FAITH	1413	SPIXWORTH WITH ST FAITHS	ARO - no change considered necessary	
BW1	HINKS MEADOW HALL KINGSWOOD AVENUE THORPE MARRIOTT	3906	TAVERHAM NORTH	ARO - this station is split due to the high number of electors. No change considered necessary	
BX1	TAVERHAM VILLAGE HALL SANDY LANE TAVERHAM	3588	TAVERHAM SOUTH	ARO - this station is split due to the high number of electors. No change considered necessary	

POLLING DISTRICT	POLLING PLACE	ELECTORATE	BROADLAND DISTRICT/WARD	COMMENTS RECEIVED	ARO RESPONSE TO COMMENTS IF PROPOSED CHANGES/PLUS FURTHER COMMENTS FOLLOWING THE PARLIAMENTARY ELECTION
BY2	HOLY TRINITY CHURCH CENTRE SALHOUSE ROAD NEW RACKHEATH	1467	WROXHAM	ARO - no change considered necessary	Wasn't able to use the Church Centre for the European and Parliamentary elections so used Rackheath Village Hall. Received a few complaints from voters having to use the Village Hall during the Parliamentary election. Would prefer to use the Church Centre, if possible but they have regular community group bookings on Thursdays. However, there is a smaller room available to use which is suitable.
BY3	JUBILEE HALL LOWER STREET SALHOUSE	1269	WROXHAM	ARO - no change considered necessary	
BY1 BY4	CHURCH HALL NORWICH ROAD WROXHAM	90 1237	WROXHAM	ARO - no building available in BY1 – Belaugh. No change considered necessary	

NORWICH NORTH PARLIAMENTARY CONSITITUENCY

POLLING DISTRICT	POLLING STATION	ELECTORATE	BROADLAND DISTRICT/WARD	COMMENTS/ RECOMMENDATIONS	ARO RESPONSE TO COMMENTS IF PROPOSED CHANGES / PLUS FURTHER COMMENTS FOLLOWING THE PARLIAMENTARY ELECTION
HC1	HELLESDON COMMUNITY CTR. WOOD VIEW ROAD HELLESDON	4559 (PVs 949)	HELLESDON NORTH WEST	<p>ARO - this station is split due to the high number of electors. No change considered necessary</p> <p>Town Council: We are happy with our polling places. Currently those Parishioners in the South East Ward use St Pauls Hall on Hawthorne Avenue and those in the North West Ward use the Community Centre or have recently for the European Elections used our Parish Council Chamber. In regards to elections and the polling places for the North West Ward, we would like to be consulted each time there is a need of use on whether the Community Centre or the Parish Council Chamber is better for us as a Parish Council. I hope this is agreeable with yourselves.</p> <p>Labour Party Whilst we have no problems with the current polling stations we believe that the size of the electorate in both Wards deserves that each should be split into two polling districts and new polling stations established. Possible locations for new polling stations might be the Church on Brabazon Road and the Broadland District Council Training Centre on Carrowbreck Road.</p>	<p>The current polling station is a well-known community building which has been used for a number of years. It is in a fairly central position within the polling district. The number of voters (in person) allocated to this station is approx. 3,600. In line with EC guidance, this station is split into two stations with two teams of staff dealing with approx. 1,800 electors each. Turnout at elections differ but the highest turnout was 72.96%. The turnout at this station for this year's District election was 20.57%. I am not aware of any complaints received from voters about the use or accessibility of the community centre or parish council chamber. The community centre is large enough to hold two teams of polling staff and the chamber has been used for lower turnout elections and by-elections.</p> <p>If it was decided to split this polling district into two, Reephams Road seems to be the natural split as this would result in a more even distribution of electors. However, there doesn't appear to be a suitable building that could be used as a polling station in the second area.</p> <p>Broadland District Council Training Centre is within this polling district but is located on the Drayton High Road. There is a school (Arden Grove Infant and Nursery School) off Cottingham Close but the Council tries to avoid the use of schools, where possible. Therefore, I recommend no change to the current arrangements.</p> <p>Parliamentary election turnout was 68.4% and no reported problems or complaints received. No change considered necessary and am happy to use either building depending on election.</p>
HD1	ST PAULS HALL HAWTHORNE AVENUE HELLESDON	4144 (PVs 794)	HELLESDON SOUTH EAST	<p>ARO - this station is split due to the high number of electors. No change considered necessary</p> <p>Cllr. David Britcher: The arrangements for Hellesdon South East are fine. While canvassing no resident mentioned any problems with the current polling station in Hellesdon South East.</p> <p>Town Council: We are happy with our polling places. Currently those Parishioners in the South East Ward</p>	<p>The building is in a central position within the polling district. Previously, the adjacent building (Coronation Hall) was used but fell into a state of disrepair so was replaced with St Pauls Hall. The number of voters (in person) allocated to this station is approx. 3,350. In line with EC guidance, this station is split into two teams of staff allocated approx. 1,675 electors each. The highest turnout has been 73.63%. The turnout at this year's District election was 22.79%. I am not aware of any</p>

POLLING DISTRICT	POLLING STATION	ELECTORATE	BROADLAND DISTRICT/WARD	COMMENTS/ RECOMMENDATIONS	ARO RESPONSE TO COMMENTS IF PROPOSED CHANGES / PLUS FURTHER COMMENTS FOLLOWING THE PARLIAMENTARY ELECTION
				<p>use St Pauls Hall on Hawthorne Avenue and those in the North West Ward use the Community Centre or have recently for the European Elections used our Parish Council Chamber. In regards to elections and the polling places for the North West Ward, we would like to be consulted each time there is a need of use on whether the Community Centre or the Parish Council Chamber is better for us as a Parish Council. I hope this is agreeable with yourselves.</p> <p>Labour Party</p> <p>Whilst we have no problems with the current polling stations we believe that the size of the electorate in both Wards deserves that each should be split into two polling districts and new polling stations established. Possible locations for new polling stations might be the Church on Brabazon Road and the Broadland District Council Training Centre on Carrowbreck Road</p>	<p>complaints from voters about the use or accessibility of St Pauls Hall. The Hall is large enough to hold two teams of polling staff.</p> <p>If it was decided to split this polling district into two, Reepham Road would appear to be the natural split. However, there doesn't appear to be a suitable building that could be used as a polling station in the area. There are two schools in this area but these are on the western edge of the polling district. The church on Brabazon Road is on the eastern edge of the polling district.</p> <p>Therefore, I recommend no change to the current arrangements.</p> <p>Parliamentary election turnout was 67.2% and no reported problems or complaints received. No change considered necessary.</p>
HE1	OLD CATTON SCOUT HEADQUARTERS LODGE LANE	2968	OLD CATTON & SPROWSTON WEST	<p>ARO - no change considered necessary</p> <p>Labour Party</p> <p>We have no problems with the polling stations for HE1 and HE2 polling districts.</p>	
HE2	RECREATION GROUND PAVILION CHURCH STREET OLD CATTON	1925	OLD CATTON & SPROWSTON WEST	<p>ARO - no change considered necessary</p> <p>Labour Party</p> <p>We have no problems with the polling stations for HE1 and HE2 polling districts.</p>	
HE3	CRICKET PAVILION BARKERS LANE SPROWSTON	1721 (PVs 406)	OLD CATTON & SPROWSTON WEST	<p>ARO – station situated outside polling district.</p> <p>Parish Cllr. Robin Knowles:</p> <p>With reference to your review of Polling Stations. My wife and myself live in Sprowston West. At election time we have a long walk to our Polling Station which is in Sprowston Central Ward at the Sprowston Cricket Club.</p> <p>This is a long walk even in good weather! Unfortunately I cannot give an alternative location so may have to go for a Postal Vote. It was easier when we could vote at the school in White Woman Lane.</p> <p>Labour Party</p> <p>We have no problems with the polling stations for HE1 and HE2 polling districts but believe that the Cricket Pavilion on Barkers Lane is unsuitable as a polling station as it is not located in the HE3 polling district and also requires voters to cross a busy road in order to vote. Possible alternative venues might be use of White Woman Lane School; use of a mobile polling station on the car park outside the Indian Restaurant on Tills Road or even use of a</p>	<p>This polling place was determined by Council following the 2015 polling district and place review. The previous place for this polling district was the White Woman Lane Junior School; however, due to considerable concerns raised by the teaching staff over the regular disruption to the schooling of pupils, we were asked to find an alternative station.</p> <p>Alternative venues that were considered but discounted included Redmayne View Residential Home (potential disturbance to residents), the Bengal Tiger Restaurant (not sufficient space) and Lavare Park (objections due to access difficulties). The Cricket Pavilion was supported by Sprowston Town Council as an alternative to the school.</p> <p>Although polling places can be situated outside polling districts, this station is quite a distance from the polling station and requires voters to cross a busy main road. It is not in an ideal location, as there are approx. 500 houses either side of this building (approx. 850 electors) that are close to this building but not able to vote there. The school would be a better option but I appreciate that this</p>

POLLING DISTRICT	POLLING STATION	ELECTORATE	BROADLAND DISTRICT/WARD	COMMENTS/ RECOMMENDATIONS	ARO RESPONSE TO COMMENTS IF PROPOSED CHANGES / PLUS FURTHER COMMENTS FOLLOWING THE PARLIAMENTARY ELECTION
				function room within a Public House	was the subject of public consultation in 2015. The highest turnout at station has been 69.53%. Turnout at the last District election was 21.59%. I suggest that further investigations be made into possible alternative buildings, such as using a mobile or revisiting the use of the school. Parliamentary election turnout was 64% - no complaints received. The school still doesn't wish to be used as a polling station and no other suitable building has been identified in the polling district.
HF1	SENIOR CITIZEN CLUB RECREATION GROUND ROAD, SPROWSTON	4226 (PVs 849)	SPROWSTON CENTRAL	ARO - this station is split due to the high number of electors. No change considered necessary Cllr. Natasha Harpley: Regarding Sprowston Central, I think that the provisions for the last election were not sufficient. Although it is a relatively small ward, 1 polling station is not enough, particularly as it is right on the edge of the ward and many voters are older and less mobile. I would suggest an additional polling station on the opposite edge or more centrally located. Labour Party We believe that the Cricket Pavilion on Barkers Lane should be used as a second polling station within this Ward with a new polling district created. Another possible polling station within this ward might be the Diamond Centre.	This building is on the south east edge of the polling district but still fairly central. The number of voters in person is approx. 3,370; therefore, in line with EC guidance this station is split with two teams of staff dealing with approx. 1685 each. I am not aware of any complaints arising about the use or accessibility of the premises. There doesn't appear to be a natural split for this polling district but if an alternative polling place can be found for HE3, the Cricket Pavilion could be used as a second polling station and a split around this area could be investigated. However, the Senior Citizen Club has been used for a number of years and no complaints have been recorded about its use or accessibility but it is on a main road and has limited parking. The highest turnout at station has been 69.59%. Turnout at the last District election was 29.21%. The Diamond Centre is situated in the south west of the polling district and has good parking but the site is not in a central location. If a polling place can be found in HE3, I suggest further investigations are made to see whether the polling district could be split so the Cricket Pavilion could be used as a second polling station. Parliamentary election turnout was 68.6% - no complaints received although parking on road gets very busy, especially at school drop off and pick up times. Sprowston Methodist Church has been identified as a possible alternative.
HG1	SPORTS & SOCIAL CLUB BLUE BOAR LANE SPROWSTON	1611	SPROWSTON EAST	ARO - no change considered necessary	
HG2	GAGE ROAD CHAPEL SPROWSTON	4974 (PVs 1098)	SPROWSTON EAST	ARO - this station is split due to the high number of electors. No change considered necessary	This building is in the north east part of the polling district. This polling place was determined by

POLLING DISTRICT	POLLING STATION	ELECTORATE	BROADLAND DISTRICT/WARD	COMMENTS/ RECOMMENDATIONS	ARO RESPONSE TO COMMENTS IF PROPOSED CHANGES / PLUS FURTHER COMMENTS FOLLOWING THE PARLIAMENTARY ELECTION
				<p>Labour Party We believe that the Sprowston South East Polling District (HG2) should be split into two and an additional polling station created at either Sprowston Community Academy or at St Cuthbert's Church on Wroxham Road.</p>	<p>Council following the 2015 polling district and place review. The previous station was Falcon Road Junior School. The number of voters allocated in person is approx. 3,870; therefore, in line with EC guidance this station is split with two teams of staff dealing with 1,935 each.</p> <p>I am not aware of any complaints about the use or accessibility of this station. The highest turnout at this station was 75.86%. The turnout for the last District election was 24.98%.</p> <p>If the polling district was to be split into two, Falcon Road appears to be the natural split. However, it could be difficult to find another suitable polling station. St. Cuthbert's Church is on the western edge of the polling district and situated on a main road. Sprowston Academy is in a good location but there are potential problems using schools.</p> <p>I recommend investigating if there are any alternative buildings in the polling district that are available and suitable to be used as a polling station to see whether it is practical to split the polling district.</p> <p>Parliamentary election turnout was 70% and no reported problems or complaints received. St Cuthbert's Church has been visited but its location is not ideal as its access is via the busy main road and very close to the roundabout. Therefore, I recommend no changes.</p>
HK1	ST ANDREWS CENTRE BRENDA JAMES CLOSE OFF THUNDER LANE THORPE ST ANDREW	2746 (PVs 617)	THORPE ST ANDREW NORTH WEST	<p>ARO - this station is split due to the high number of electors. Problems finding suitable station in polling district - investigate possible boundary change.</p> <p>Cllr John Fisher: We need to retain 2 stations to cover the whole ward and ensure residents do not have too far to travel. The current station at Churchfield Green is well placed. Finding a good location for the other polling district is difficult. The original Longfields road site was well positioned but when that became part of the school site it's use became difficult as I know guidance is that schools should not be used. The Cottage PH is ok but as have been the case for the past few elections it has been booked by other parties. The St. Andrews centre as used in last two elections is not suitable as it is not in the polling district, and parking can sometimes annoy the residents of Brenda James CI who have designated places. Other alternatives are the hall on Margaret Crescent, not used very often easy access,</p>	<p>Previously, the Adult Learning Centre at Thorpe High School was used as a polling station but this was redeveloped for school use so was no longer available. From 2015, The Cottage restaurant and bar, off Thunder Lane was used. This is in quite a good position within the polling district. However, we had problems securing the use of the premises for snap elections so had to find an alternative venue. The St Andrews Centre is just outside the polling district; therefore, I had suggested a possible change to the polling district boundary to include the houses around this building (e.g. Thunder Lane and Brenda James Close).</p> <p>The Morse Pavilion on Laundry Lane is in a good position, even though it is just outside the polling district, as it is not far from the original station at the school. However, it would need to be checked for its suitability as we've previously been told it would be too small. The Bowls Club next to the Pavilion would be suitable and this has previously been</p>

POLLING DISTRICT	POLLING STATION	ELECTORATE	BROADLAND DISTRICT/WARD	COMMENTS/ RECOMMENDATIONS	ARO RESPONSE TO COMMENTS IF PROPOSED CHANGES / PLUS FURTHER COMMENTS FOLLOWING THE PARLIAMENTARY ELECTION
				<p>reasonable on road parking, quiet road, not sure of internal arrangement, I assume owned by Clarian housing. Other option the Morse Pavilion on laundry lane recreation ground. Well suited position fairly central to the polling district, good parking easy access.</p> <p>Labour Party</p> <p>We believe that a third polling station should be added in this Ward with the polling district boundaries adjusted accordingly. It is nonsensical that residents in Brenda James Close and other roads close by do not vote at St Andrews Centre but have to go to Churchfield Green. Ideally a new polling station should be located South of St Williams Way but we have not been able to identify a suitable location – unless a mobile polling station could be parked on the car park of the Gordon PH. Other venues that might be considered apart from the two existing polling stations are a self-contained building somewhere on the Thorpe St Andrew School site or possibly the Scout Hut on Plumstead Road.</p>	<p>inspected. However, the club wished to remain open for bowls matches and refreshments for teams. As the bar was in the main room where the polling station would need to be located, this was not possible.</p> <p>The hall on Margaret Close would not be suitable as most voters would have to cross a busy main road to get to the station.</p> <p>The Scout Hut on Plumstead Road is not suitable as a station, due to access problems.</p> <p>We currently split this station due to the size of the electorate although the number of electors in person is under 2,500 so it could be a single station. Highest turnout for this polling district was 74.28% (at the Cottage). The turnout for the district elections was 25.74%.</p> <p>I suggest further investigations are made to see if an alternative venue can be found in a better position within the polling district.</p> <p>Parliamentary election turnout was 72.6% and no reported problems or complaints received. The Morse pavilion on Laundry Lane has been inspected but is too small. It has been confirmed that the Bowls Club could be used but not when bowls matches were taking place (i.e. in May). There are currently no suitable rooms at Thorpe High School but there might be something available in the future. St Andrews Football Club also has a building on Laundry Lane which is to be inspected for its suitability. If this isn't suitable, I recommend using St Andrews Centre as a polling station, but keep the situation under review.</p>
HK2	OUR LADY MOTHER OF GOD CHURCH HALL CHURCHFIELD GREEN ST WILLIAMS WAYS THORPE ST ANDREW	3175 (710 PVs)	THORPE ST ANDREW NORTH WEST	<p>ARO - this station is split due to the high number of electors. No change considered necessary</p> <p>Labour Party</p> <p>We believe that a third polling station should be added in this Ward with the polling district boundaries adjusted accordingly. It is nonsensical that residents in Brenda James Close and other roads close by do not vote at St Andrews Centre but have to go to Churchfield Green. Ideally a new polling station should be located South of St Williams Way but we have not been able to identify a suitable location – unless a mobile polling station could be parked on the car park of the Gordon PH. Other venues that might be considered apart from the two existing polling stations are a self-contained</p>	<p>The building is in a fairly central position within the polling district and has been used for several years. The number of voters (in person) allocated to this station is approx. 2,465. In line with EC guidance, this station is split into two teams of staff allocated approx. 1,230 electors each. The highest turnout has been 75.56%. The turnout at this year's District election was 30.37%. I am not aware of any complaints from voters about the use or accessibility of the church hall. The Hall is large enough to hold two teams of polling staff.</p> <p>The total number of electors in HK1 and HK2 would not warrant creating an additional polling district.</p> <p>Parliamentary election turnout was 71.7% and no reported problems or complaints received. I</p>

POLLING DISTRICT	POLLING STATION	ELECTORATE	BROADLAND DISTRICT/WARD	COMMENTS/ RECOMMENDATIONS	ARO RESPONSE TO COMMENTS IF PROPOSED CHANGES / PLUS FURTHER COMMENTS FOLLOWING THE PARLIAMENTARY ELECTION
				building somewhere on the Thorpe St Andrew School site or possibly the Scout Hut on Plumstead Road.	recommend no changes.
HL1	DUSSINDALE CENTRE POUND LANE THORPE ST ANDREW	3429	THORPE ST ANDREW SOUTH EAST	<p>ARO - this station is split due to the high number of electors. No change considered necessary</p> <p>Cllr Sue Lawn: I would like to confirm I am completely satisfied with the Polling Stations in Thorpe St Andrew as a whole. I represent Thorpe St Andrew South East and our Polling Stations are: Dussindale Centre There is ample Car Parking joining on to Sainsbury's carpark. There is acceptable disabled access as the centre is all on ground level flooring. The Hall gives privacy to all voters. This Polling Station is in a perfect location for residents living in the Eastern Section of Thorpe St Andrew South East.</p> <p>Cllr John Fisher: There is a definite need for two stations here. The current ones, Roxley Hall, and Dussindale ctr, are well situated, easy to access, have good parking. Keep as they are.</p> <p>Labour Party We have no problems with the current polling station.</p>	Whilst reviewing proposals against maps, I suggest a small tweak to the boundary lines to extend from Dussindale Drive southwards to the mini-roundabout and along the railway line down to Yarmouth Road. This would mean that the few houses on Yarmouth Road before the railway line will be included in this polling district and they can vote at the Dussindale Centre.
HL2	ROXLEY HALL, YARMOUTH ROAD THORPE ST ANDREW	1999	THORPE ST ANDREW SOUTH EAST	<p>Cllr Sue Lawn: Thank you for email. I would like to confirm I am completely satisfied with the Polling Stations in Thorpe St Andrew as a whole. I represent Thorpe St Andrew South East and our Polling Stations are: Roxley Hall There is ample Car Parking to rear of this building. There is acceptable disabled access again the Hall is all on ground floor. The Hall gives privacy to all voters. This Polling Station is in a perfect location for residents living in the Southern Section of Thorpe St Andrew South East.</p> <p>Cllr John Fisher: There is a definite need for two stations here. The current ones, Roxley Hall, and Dussindale ctr, are well situated, easy to access, have good parking. Keep as they are</p> <p>Labour Party We have no problems with the current polling station.</p>	