



Data Profile

March 2025

Contents

| | Page Number |
|--|--------------------|
| 1. Introduction | |
| 1.1 The data profile | 2 |
| 1.2 Swainsthorpe Neighbourhood Plan | 2 |
| 1.3 Location of Swainsthorpe | 3 |
| 1.4 Local Planning Policy Greater Norwich Local Plan | 5 |
| 1.5 Green energy developments | 9 |
| 2. Built environment and design | |
| 2.1 Historic environment | 12 |
| 2.2 Listed buildings | 14 |
| 3. Housing | |
| 3.1 District Council housing information | 16 |
| 3.2 Housing data | 17 |
| 4. Community infrastructure | |
| 4.1 Population | 23 |
| 4.2 Health and well-being | 24 |
| 4.3 Qualifications | 26 |
| 4.4 Deprivation | 26 |
| 4.5 Crime | 28 |
| 4.6 Education | 29 |
| 4.7 Community | 32 |
| 5. Transport and accessibility | |
| 5.1 Public transport | 28 |
| 5.2 Traffic and pedestrian safety | 28 |
| 5.3 Public Rights of Way | 41 |
| 5.4 Car ownership and travel to work | 43 |
| 6. Natural Environment | |
| 6.1 Landscape character | 46 |
| 6.2 Biodiversity and geodiversity | 53 |
| 6.3 Water, rivers and flooding | 59 |
| 6.4 Dark skies | 62 |
| 7. Economy | |
| 6.1 Economy | 63 |

Appendix 1: Census 2021 data for Swainsthorpe compared to South Norfolk district and Norfolk.

1. Introduction

1.1. The data profile

1.1.1 This data profile is part of the evidence base for the Swainsthorpe Neighbourhood Development Plan.

1.1.2 Census 2021 data is used throughout the data profile and is obtained from the Office for National Statistics Nomis website containing official census and labour market statistics.¹ The information comes with the following statement:

'In order to protect against disclosure of personal information, records have been swapped between different geographic areas and counts perturbed by small amounts. Small counts at the lowest geographies will be most affected.'

Note that small differences in counts between different datasets are possible due to the general disclosure control methods applied to all Census 2021 data. There are small changes to some counts (cell key perturbation), for example, a count of four could be changed to a three or a five. This might make small differences between tables depending on how the data are broken down perturbation is applied.'

1.1.3 The Office for National Statistics 'Build a custom area profile' tool has been used to create a Census 2021 profile for Swainsthorpe parish compared to South Norfolk district and Norfolk data.² This can be seen in Appendix 1.

1.2 Swainsthorpe Neighbourhood Plan

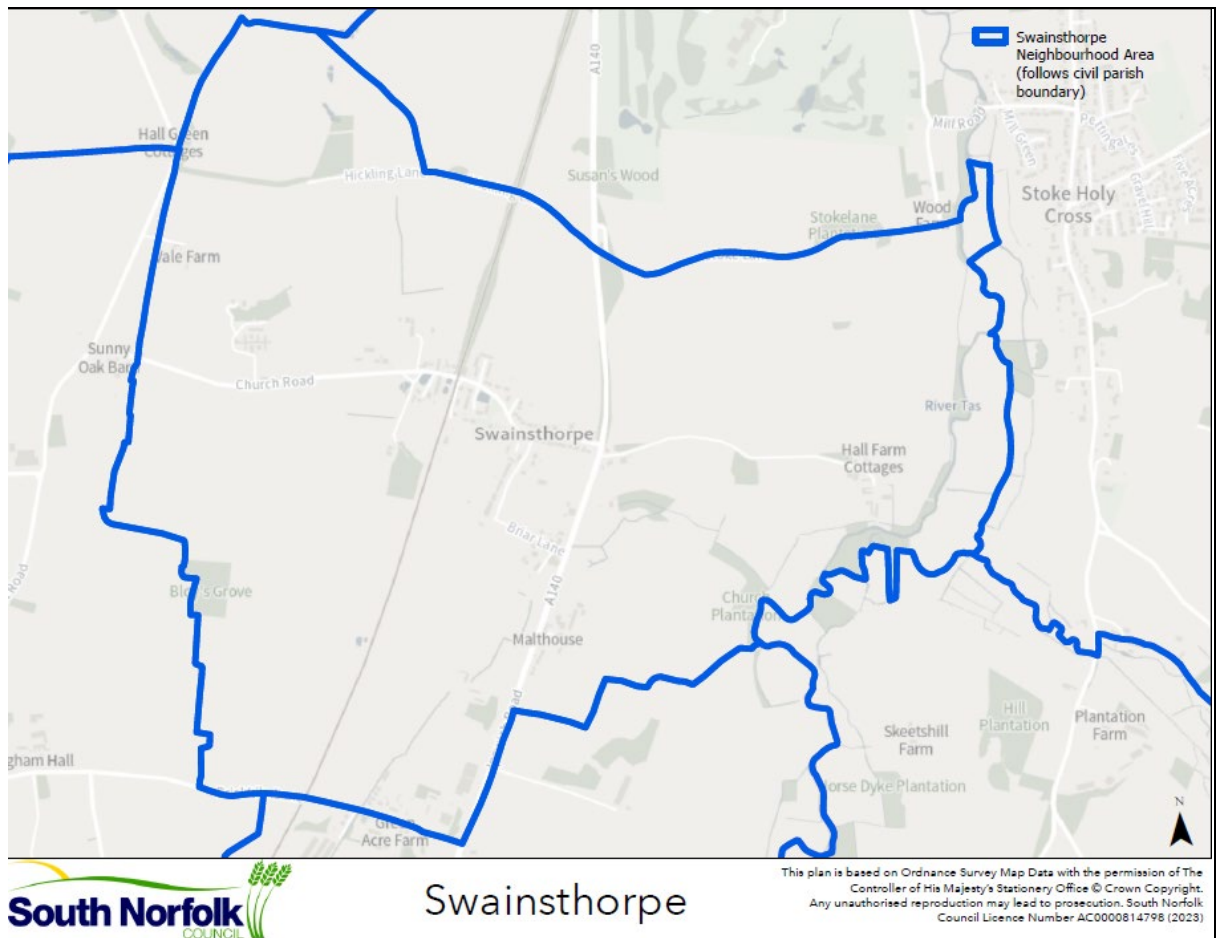
1.2.1 In February 2024, Swainsthorpe Parish Council submitted a Neighbourhood Area application for the purposes of developing a Neighbourhood Plan. The proposed area followed the civil parish boundary and therefore, in accordance with Regulation 5A of the 'Town and Country Planning, England - Neighbourhood Planning (General) Regulations 2012' (as amended) South Norfolk Council designated the Neighbourhood Area. The Parish Council is the relevant body for preparing the Neighbourhood Plan.³

¹ www.nomis.co.uk

² www.ons.gov.uk/visualisations/customprofiles/draw/. Information obtained 02.10.2024.

³ <https://www.southnorfolkandbroadland.gov.uk/planning/future-development/neighbourhood-plans/emerging-neighbourhood-plans-south-norfolk/swainsthorpe-neighbourhood-plan>. Information obtained 24.09.2024.

Figure 1 below: Map showing the Swainsthorpe Neighbourhood Area.
Source: South Norfolk and Broadland Council website. Map obtained 24.09.2024.



1.3 Location of Swainsthorpe

- 1.3.1 The Parish of Swainsthorpe lies on the A140 between Norwich and Long Stratton, approximately 10 kilometres south of Norwich and just north of Newton Flotman. The River Tas flows through the village.

1.4 Local Planning Policy Greater Norwich Local Plan

- 1.4.1 The adopted South Norfolk Local Plan is made up of various documents. Each document has been developed in consultation with the community and subject to independent examination before being formally adopted by the council. The documents that make up the Local Plan contain policies to guide future development in South Norfolk and are used when assessing planning applications.
- 1.4.2 South Norfolk Council worked with Broadland Council, Norwich City Council and Norfolk County Council to prepare the Greater Norwich Local Plan (GNLP). The GNLP plans for the housing and job needs of the area to 2038 and builds on the long-established joint working arrangement for Greater Norwich. It includes strategic policies to guide future development and plans to protect the environment. It looks to ensure that delivery of development is done in a way which promotes sustainability and the effective functioning of the whole area. The GNLP was adopted by South Norfolk Council at a Council meeting on 25 March 2024.
- 1.4.3 The Site Specific Allocations and Policies Document was formally adopted on 26 October 2015. It designates areas of land to deliver housing, employment, recreation, open spaces and community uses. Together with the other documents that make up the Development Plan it is used to assess planning applications and guide development proposals to ensure the delivery of high quality sustainable developments across South Norfolk. The majority of the document is now superseded by the adoption of the Greater Norwich Local Plan except for the villages, which will be addressed through a new South Norfolk Village Clusters Housing Allocations Local Plan which is currently being prepared.⁴
- 1.4.4 The South Norfolk Village Clusters Housing Allocations Plan (The Village Clusters Plan) aims to deliver sustainable growth within the villages of South Norfolk. The Village Clusters Plan has been developed alongside the Greater Norwich Local Plan (GNLP) and in accordance with Government's national planning policies and guidance. The Plan allocates a series of smaller sites, typically within the range of 12 to 50 homes, across the 48 Village Clusters in South Norfolk, to accommodate at least 1,200 new homes in total. The Plan also defines the Settlement Limits for the villages within these clusters, making provision for further smaller sites and incorporating revisions to reflect development that has occurred, or has been permitted since the boundaries were last updated.⁵
- 1.4.5 Within the emerging South Norfolk Village Clusters Housing Allocation Plan, Newton Flotman and Swaisthorpe are identified as a village cluster. The site allocation is within Newton Flotman parish. The following information is taken

⁴ <https://www.southnorfolkandbroadland.gov.uk/planning/future-development/current-local-plan/adopted-south-norfolk-local-plan>, Information obtained 24.09.2024.

⁵ <https://democracy.southnorfolkandbroadland.gov.uk/documents/s1813/Appendix%20A.pdf>. Information obtained 02.10.2024.

from the emerging South Norfolk Local Plan South Norfolk Village Clusters Housing Allocation Plan, December 2023:

27. Newton Flotman and Swainsthorpe

Form and character

Newton Flotman

The main settlement lies on the A140 in the Tas Valley, where the boundaries of Saxlingham Thorpe and Newton Flotman parishes meet. Development within the settlement is nucleated, with almost all residential development in the village occurring to the north of the river. The valley side development is visually prominent when approaching from the south-west. Little development has occurred on the east side of the A140 in the attractive valley floor area of the Tas Valley, with the A140 therefore forming a boundary to the main part of the settlement. Much of this eastern area is now included within the enlarged Shotesham Conservation Area. Church Road provides a strong boundary when approached from the north with the church being strikingly prominent.

Swainsthorpe

Development is concentrated between the A140 and the Norwich/London railway line. The settlement is characterised by detached dwellings with the central focus being around the Church and its setting. This is an attractive undeveloped space in the village where development would be inappropriate. Despite recent new development the village has maintained a rural feel which has been achieved by the retention of attractive features such as ponds within the village.

Services and Community Facilities

Newton Flotman has a good range of services and facilities. The main part of the village contains a GP surgery, primary school, village hall, recreation field, residential care home, motorbike salesroom and allotments. There is a restaurant to the south of the village, and local employment at the animal feed mill to the south of the river. The village possesses a good direct link via the A140, to Norwich and Long Stratton and there are regular bus services to Norwich, Long Stratton and Diss. Swainsthorpe also has a pub/restaurant on the A140 and is connected by the same bus routes.

Settlement Limit

Newton Flotman

The Settlement Limit has been drawn to include the main built form of the settlement and include the allocated land, NEW1 made within the 2015 Site Allocations Plan. The village hall, rectory and church are excluded from the Settlement Limit, as is the animal feed mill and all housing on the east of Ipswich Road.

Swainsthorpe

The Settlement Limit has been drawn to include the main built form of the settlement, preventing further extension into the surrounding countryside. Due to the limited services and facilities available, the narrowness of local roads, the boundary has been drawn to allow for only very limited infill.

Site allocations

VC NEW1 The site lies to the southwest of Alan Avenue, and southeast of the 2015 Local Plan allocation. The site is well located for access to the services and facilities within the village, and to public transport on the main A140 corridor.

The site requires two points of access, the first through the carried forward 2015 Local Plan allocation (NEW1) and the second directly from Alan Avenue. Detailed proposals for the 2015 Local Plan allocation received a committee resolution to grant full planning permission for 31 dwellings in May 2022. The layout for the carried forward SWA1 (Application Ref. 2021/2784) includes an access across the northwest corner of this allocation, adjacent to 111 Alan Avenue, and also makes provision for access between the sites along the north-western boundary of this allocation. The site promoters have indicated that a second access can be achieved in the northeast corner of the site. The Highways Authority's preference for the second access to become a continuation of Alan Avenue into the allocation site as the primary route, and the remainder of Alan Avenue (from No. 71) to become the side road off this primary route.

Once development has taken place on the 2015 Local Plan allocation this site will be surrounded by modern housing on three sides and will be visually well contained. The remaining southwestern boundary has limited public viewpoints but would benefit from reinforcement of the existing hedge line to soften the impact of the development and contain it within the wider landscape. Given the proximity of 119 surrounding residential development, careful consideration will need to be given to the topography of the site, which slopes broadly downwards from north to south.

Potential issues with foul water capacity have been raised and were also identified as part of the planning application process for the carried forward NEW1; consequently, the site may need to be phased beyond the first years of the plan and early engagement with Anglian Water is advised. The site is also identified as being within Groundwater Protection Zone 3, which would not preclude development, but requires early liaison with the Environment Agency regarding the protection of water quality.

Policy VC NEW1: Land off Alan Avenue

1.05ha of land is allocated for approximately 25 dwellings.

The developer of the site will be required to ensure:

- Two points of access, the first via the adjoining carried forward 2015 Local Plan allocation (now VC NEW2), and the second from another point on Alan Avenue, closer to the junction with Flordon Road;
- Reinforcement of the vegetation of the southwestern boundary to successfully contain the site and integrate the development with the wider countryside;
- Design and layout to take account of the site topography to protect the residential amenity of existing and future properties;
- Liaison with Anglian Water regarding foul water capacity and the potential need to phase the site to later in the plan period;

Carried forward allocations

VC NEW2

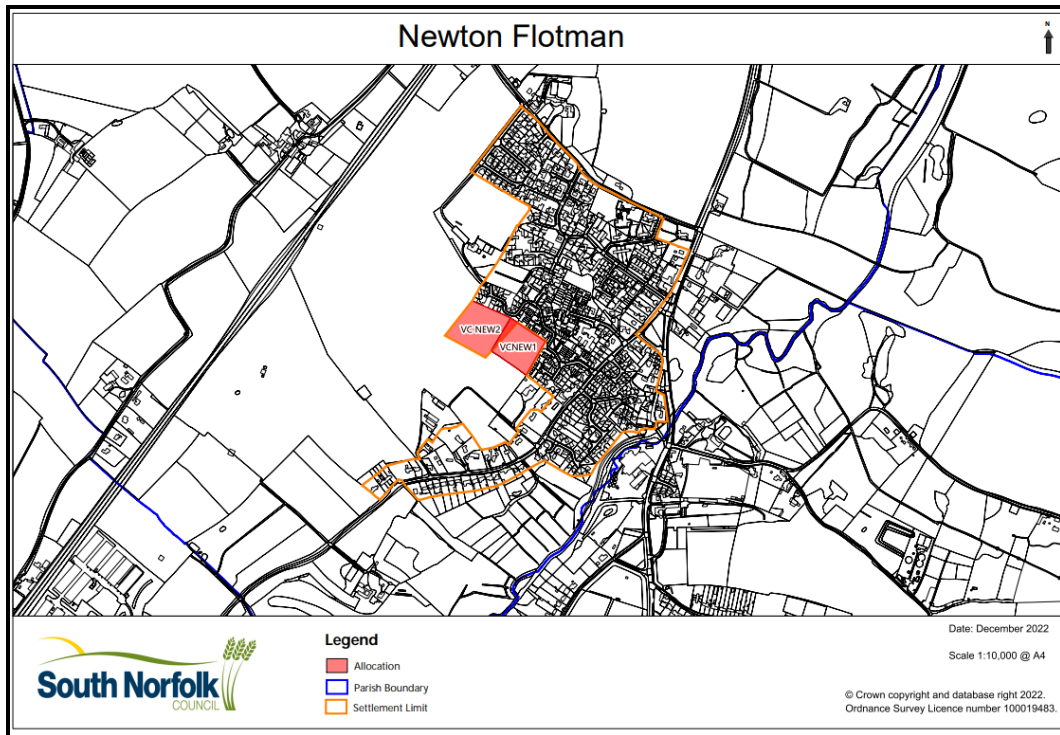
Previously called NEW1, this allocation from the 2015 Local Plan is carried forward within this document to ensure that development on the site continues to be achievable in an appropriate manner. This site is to the south-west of Alan Avenue. The site is adjacent to, and within the same control as, allocation VC NEW1 and where possible opportunities to maximise the connectivity between the sites should be explored via the development management process. A planning application for 31 dwellings has been considered by South Norfolk Council's Development 120 Management Committee and, at the time of preparing this plan, has a resolution to approve, subject to a being able to address nutrient neutrality (2021/2784).

Policy VC NEW2: Land adjacent Alan Avenue

1.3 hectares of land is allocated for housing and associated infrastructure for approximately 30 dwellings. This site is expected to be built out in accordance with planning application 2021/2784 when approved. Any new planning permission will need to ensure the following:

- Vehicular and pedestrian access via Alan Avenue;
- Landscaping of the site to reflect the edge of settlement location, as well as its elevated position within the wider landscape;
- Appropriate boundary treatments along the north-west and southwest site boundaries to minimise the visual impact of the development;
- Connectivity of the site with VC NEW1 to be incorporated into the site design including vehicular and pedestrian access between the sites, landscaping, site layout and the drainage scheme, unless otherwise agreed with the LPA;
- Liaison with Anglian Water regarding foul water capacity and the potential need to phase the site to later in the plan period.

Figure 4 below: Map showing the Site Allocations in Newton Flotman parish.
Source: South Norfolk Council Village Clusters Housing Allocations Plan consultation material.⁶ Information obtained 02.10.2024.



1.5 Green energy developments

1.5.1 Swainsthorpe's northern boundary (Hickling Lane) is less than 0.1 mile from the southern boundary of the Norwich Substation and the centre of the village is 0.8 mile south of the substation and as such is affected by the current major upgrading to increase significantly the additional renewable energy from the North Sea windfarms. This additional capacity will facilitate ongoing electricity distribution to the rest of the country.

1.5.2 This rapid and significant expansion has resulted in many green energy transmission and storage developments that have been approved or currently proposed. All these developments will directly impact Swainsthorpe Village. These evolving proposals are transforming the village and the periphery by converting the surrounding arable fields that have given the village its rural setting, into hard industrial landscaping.

1.5.3 These developments include (as at March 2025):

- Upgrading of the existing power line that runs through Swainsthorpe
- National Grid is planning an additional power line and pylons from Norwich Sub Station to Tilbury. The first part of the line directly impacts the village, particularly The Vale.

⁶ <https://southnorfolkandbroadland.oc2.uk/docfiles/11/Newton%20Flotman.pdf>. Information obtained 02.10.2024.

- Three privately planned Battery Energy Storage Systems (BESS's) within and directly adjacent to the village. These keep evolving as battery technology develops.
- New Norwich Substation building adjacent to Hickling Lane
- An 81-hectare solar farm (*Bloys Grove*) immediately south of Church Road with all associated cabling, requiring major road works.

1.5.4 The planning references are given below and a map and can be viewed along with location maps on the South Norfolk Council planning portal:⁷

- **Swainsthorpe parish**

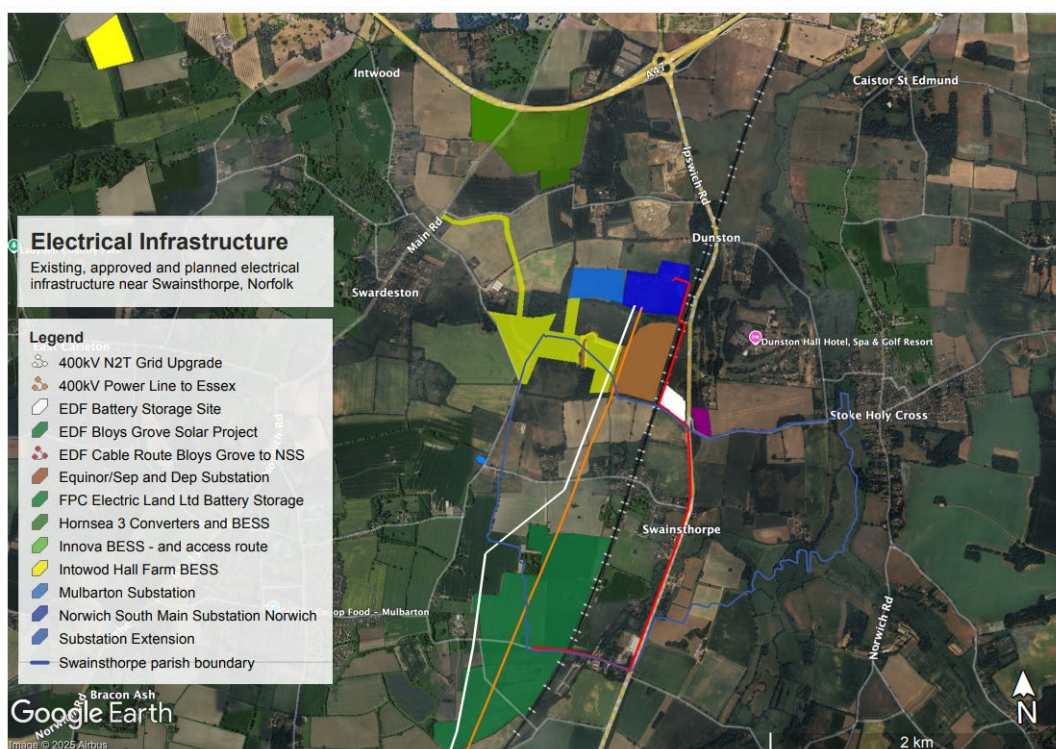
- 2021/2495 Land east of Kenningham Hall: between Church Road in the north and Hall Lane in the south-west
 - Installation of a solar farm comprising: ground mounted solar panels, access tracks; inverter/transformers, substation; storage, spare parts and welfare cabins, underground cables and conduits, perimeter fence; CCTV equipment, temporary new site entrance and access track, temporary construction compounds, and associated infrastructure and planting scheme. Application is accompanied by an environmental statement.
- 2022/2350 Highway and highway verge along Brick Kiln Lane and A140, east of Swainsthorpe.
 - Installation of underground electrical connection and communication cables between Bloy's Grove Solar Farm and Norwich Main Substation, with Temporary Construction Compound and associated infrastructure.
- 2023/1095 Land North of Hickling Lane Swainsthorpe
 - Request for Screening Opinion under the Town and Country Planning (Environmental Impact Assessment) Regulations 2017 in relation to proposed development of an Energy Storage System (ESS) and associated electrical infrastructure at Hall Farm, Hickling Lane, Norwich.
- 2023/0617 Land North of Hickling Lane Swainsthorpe
 - Construction and operation of a battery storage facility, underground cabling, fencing, drainage infrastructure, landscape planting and site access road on land to the north of Hickling Lane and up towards the Norwich National Grid Substation.
- EN010109 Sheringham Shoal offshore wind farm extension & Dudgeon offshore wind farm extension project
- EN010080 2024/2651 Hornsea Project Three Offshore Windfarm provision of onshore convertor station
- 2024/3750: Full application submitted by Innova for the 400MW Energy Storage System and substation at Hall Farm
- 2024/3858: Section 73 application to vary 2023/0617

⁷ <https://www.southnorfolkandbroadland.gov.uk/planning/planning-applications/find-planning-application>. Information obtained 04.10.2024.

- **Stoke Holy Cross parish**
 - 2021/2645 Land North of Stoke Lane Dunston
 - The installation and operation of a Battery Energy Storage System to provide standby emergency electricity for National Grid in times of high electricity demand or when renewable energy projects are unable to fulfil demand. This would be for the installation of 130MW of modular battery units with ancillary equipment, including power conversion units, 132kV transformer compound, metering cabinet, switchroom, DNO control room and welfare container.
- **Dunston parish**
 - 2024/1336 Norwich Main Substation Mangreen Hall Lane Dunston Norfolk NR14.
 - Extension of the existing Norwich Main 400 kV Substation to the west and includes associated temporary access roads. Works include extension of the existing substation platform to the west by approximately 250m x 188m. Extension of main and reserve busbar to accommodate addition of customer bays. New bus sections. Bus couplers and circuit breakers. Infrastructure works for customer connections. Extension of substation perimeter to accommodate the new infrastructure and the delivery of a minimum of 10% biodiversity net gain, linked with the proposed Landscape Mitigation Strategy

Figure 5 below: Map showing existing, approved and planned electrical infrastructure near Swainsthorpe, Norfolk.

Source: Map produced by Charles Carron Brown. Obtained 14.03.2025.



2. Built environment and design

2.1 Historic environment

- 2.1.1 A search of the Norfolk Historic Environment Record has been requested for use by the Neighbourhood Plan group. This includes information about the nature and location of archaeological sites.⁸ The Norfolk Historic Environment Record is the definitive database of the county's archaeological sites and historic buildings. It contains over 60,000 records describing the archaeology of Norfolk from the earliest evidence for human occupation from 750,000 BC up to the present day.
- 2.1.2 The Norfolk Heritage Explorer⁹ website is an abridged version of the Norfolk Historic Environment Record. A search for Swainsthorpe parish results in 84 records found. The interactive map on the website can be used to see the location of the finds. The website address is www.heritage.norfolk.gov.uk.
- 2.1.3 A parish summary of Swainsthorpe from the Norfolk Heritage Explorer website can be found at [www.heritage.norfolk.gov.uk/record-details?TNF1691-Parish-Summary-Swainsthorpe-\(Parish-Summary\)](http://www.heritage.norfolk.gov.uk/record-details?TNF1691-Parish-Summary-Swainsthorpe-(Parish-Summary)). The links within the text can be used to access the record details on the Norfolk Heritage Explorer website.
- 2.1.4 A description of Swainsthorpe including some history taken from the Parish Council website is below:¹⁰

Swainsthorpe is an old Norfolk village 5 miles south of Norwich just off the A140. Swainsthorpe is entered as Sueinestorp in the Domesday Book and was known as Sweinestorp in 1196. In later documents the 'i' is often replaced by 'y' and in three of the four Domesday entries the placename is simply 'torp.

The village had two churches serving the local community. St. Peter's in the centre of the village, which has recently (2013) been restored, and St. Mary's, on the eastern side of the A140, now sadly in ruins. St. Peter's Church today serves as the village community centre and a place of worship with regular Sunday services.

Astride the A140 between Norwich and Newton Flotman, the village of Swainsthorpe lies mainly to the west of the major road. Turn off the A140 into Church Road (the main road through the village) and see one of the most splendid village entrance views in Norfolk. The road leads up a small incline with St. Peter's Church standing sentinel at the top. Come along in Springtime and walk by the well kept gardens. The verges on either side are bursting with their early flowers. Arrive on a late summer evening with the ancient church outlined against the setting sun and find something very special.

⁸ www.norfolk.gov.uk/libraries-local-history-and-archives/archaeology-and-historic-environment/historic-environment-record. Information obtained 25.09.2024.

⁹ <https://www.heritage.norfolk.gov.uk/>. Information obtained 25.09.2024.

¹⁰ <https://swainsthorpepc.wixsite.com/swainsthorpepc/swainsthorpe-village>. Information obtained 25.09.2024.

Before turning into Church Road, The Dun Cow public house (now sadly, some may say, called the "Sugar Beat") has stood on the A140 for more than 300 years. The pub name is associated with local folklore concerning Dunston village, Dunston Hall and the terribly ghostly cow of Dunston Hill. The old pub sign, now sadly missing, used to say "come in friend – you are sure to find – the Dun Cows milk – is to your mind"!

At the top of Church Road stands the church of St Peter, one of the Round Tower churches of Norfolk. It is probably pre-Norman with some evidence of Saxon work. On the door frame can be seen Elizabethan heads and a Mass Mark sundial that helped parishioners to attend services on time. Inside can be found a Norman font and many accomplished memorials of eminent ex-parishioners. There is a brass plaque on the wall dated 1628 to commemorate Captain Havers who served under Elizabeth the First. A Devil's Door, blocked up in Puritan times, can be clearly seen on the north side.

Crossing the railway line and leaving the village, on the right side can be seen an interesting listed building called The Vale. Now converted into various sized flats, these dwellings form part of the old Swainsthorpe workhouse. Built in the 19th century by the Henstead Union in conjunction with the old Humbleyard Hundred. The site of the Humbleyard meeting place can be seen near the bend where the road meanders towards Swardeston.

2.2 Listed buildings

2.2.1 Historic England lists eight Grade II listed buildings and one Grade II* listed building in Swainsthorpe parish.¹¹

Figure 6 below: Table showing the Historic England listings in Swainsthorpe parish.

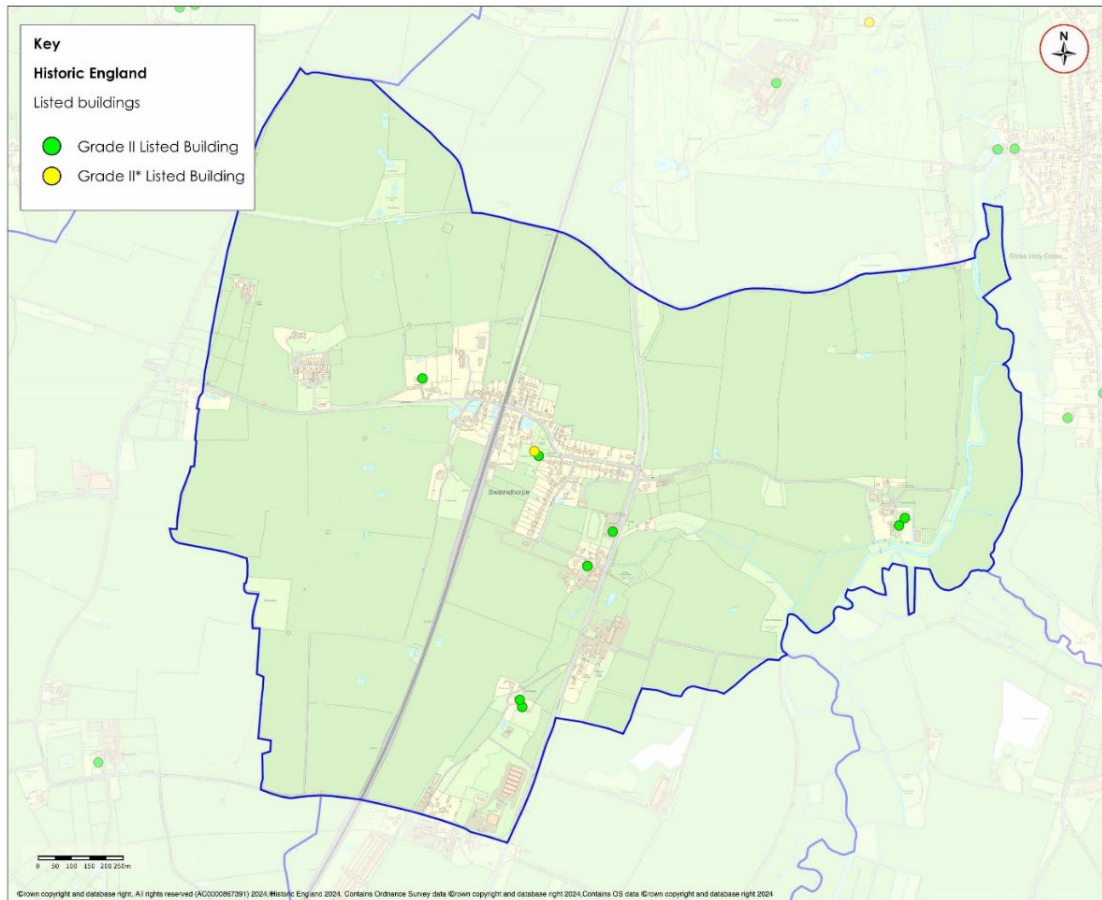
Source: Historic England website. Information obtained 25.09.2024.

| Historic England List Entry Name | Heritage category | Grade | Location in Swainsthorpe parish |
|---|-------------------|-------|---------------------------------|
| Barn 30 metres south-west of Swainsthorpe Hall | Listing | II | Swainsthorpe |
| Memorial to Joseph Dunton 9 metres south-east Chancel of Church of St Peter | Listing | II | Swainsthorpe |
| Swainsthorpe Hall | Listing | II | Swainsthorpe |
| Barn 25 metres north west of the Rookery | Listing | II | Ipswich Road, Swainsthorpe |
| Glebe Farmhouse | Listing | II | Church Road, Swainsthorpe |
| Dun Cow Inn | Listing | II | Ipswich Road, Swainsthorpe |
| The Rookery | Listing | II | Ipswich Road, Swainsthorpe |
| Primrose Cottage | Listing | II | Briar Lane, Swainsthorpe |
| Church of St Peter | Listing | II* | Swainsthorpe |

¹¹ <https://historicengland.org.uk/listing/the-list>. Information obtained 25.09.2024.

Figure 7 below: Map showing the location of Historic England listings in Swainsthorpe parish.

Source: Parish Online mapping website. Map obtained 29.09.2024.



3. Housing

3.1 District Council housing information

3.1.1 Over the period 1 April 2014 to 31 March 2024, South Norfolk District Council records show there were 5 new residential dwellings built in Swainsthorpe parish. The total remaining commitments at 31 March 2024 are 3 x 3 bedroom dwellings, Planning Application reference 2019/1641.

Figure 8 below: Housing permissions and completions in Swainsthorpe parish 1 April 2014 to 31 March 2024.

Source: South Norfolk Council. Information obtained September 2024.

| Year | Planning Application reference | Permitted | Completions | 1 bed | 2 bed | 3 bed | 4 bed |
|-----------------|-------------------------------------|-----------|-------------|----------|----------|----------|----------|
| 04/2014-03/2015 | 2011/1931 | 1 | 1 | 0 | 0 | 0 | 1 |
| 04/2015-03/2016 | 0 | 0 | 0 | 0 | 0 | 0 | 0 |
| 04/2016-03/2017 | 0 | 0 | 0 | 0 | 0 | 0 | 0 |
| 04/2017-03/2018 | 0 | 0 | 0 | 0 | 0 | 0 | 0 |
| 04/2018-03/2019 | 2017/1177 | 6 | 0 | 0 | 0 | 0 | 0 |
| 04/2019-03/2020 | 0 | 0 | 0 | 0 | 0 | 0 | 0 |
| 04/2020-03/2021 | 2016/1922 2018/2194 2019/1641 | 7 | 4 | 0 | 2 | 2 | 0 |
| 04/2021-03/2022 | 0 | 0 | 0 | 0 | 0 | 0 | 0 |
| 04/2022-03/2023 | 0 | 0 | 0 | 0 | 0 | 0 | 0 |
| 04/2023-03/2024 | 0 | 0 | 0 | 0 | 0 | 0 | 0 |
| Total | N/A | 14 | 5 | 0 | 2 | 2 | 1 |

3.1.2 The table below shows Affordable Housing Stock in Swainsthorpe parish. There are eight properties for rent and none for sale. Affordable Housing is housing for sale or rent, for those whose needs are not met by the market (including housing that provides a subsidised route to home ownership and/or is for essential local workers); and which complies with one or more of the following definitions:

a) Affordable housing for rent: meets all of the following conditions: (a) the rent is set in accordance with the Government's rent policy for Social Rent or Affordable Rent, or is at least 20% below local market rents (including service charges where applicable); (b) the landlord is a registered provider, except

where it is included as part of a Build to Rent scheme (in which case the landlord need not be a registered provider); and (c) it includes provisions to remain at an affordable price for future eligible households, or for the subsidy to be recycled for alternative affordable housing provision. For Build to Rent schemes affordable housing for rent is expected to be the normal form of affordable housing provision (and, in this context, is known as Affordable Private Rent).

Figure 9 below: Table showing Affordable Housing Stock in Swainsthorpe parish.

Source: South Norfolk Council, Information provided September 2024.

| Type | For Rent |
|--------------------|----------|
| 2 bedroom bungalow | 7 |
| 3 bedroom house | 1 |
| Total | 8 |

3.1.3 The Affordable Housing stock in Swainsthorpe parish do not have a letting priority for applicants with a connection to Swainsthorpe. Residents of Swainsthorpe are included within the local connection cascade for homes in Mulbarton.

3.1.4 Housing Need information from South Norfolk Council shows that in September 2024 there are currently no Swainsthorpe residents on South Norfolk Council's Housing Register. The data records people on the Housing Register by parish of residence. It is not known how many want to live there.

3.2 Housing data

3.2.1 Data from the 2021 Census shows that there were 160 households in Swainsthorpe parish. This is an increase households from 154 in the 2011 Census. A 'household' is defined as either one person living alone, or a group of people living at the same address and sharing both cooking facilities and a living room or dining area.¹²

3.2.2 The table below shows the tenure of households in Swainsthorpe parish from the 2011 and 2021 Census. There has been an increase in the percentage of households privately renting or living rent free.

¹² <https://commonslibrary.parliament.uk/constituency-data-housing-tenure/>. Information obtained 27.09.2024.

Figure 10 below: Table showing tenure of households from the 2011 and 2021 Census for Swainsthorpe parish.

Source: Nomis website. Information obtained 27.09.2024.

| Tenure | Census 2011 percentage | Census 2021 percentage |
|-----------------------------------|------------------------|------------------------|
| All Categories | 100% | 100% |
| Owned or shared ownership | 87% | 82.5% |
| Social rented | 4.5% | 3.1% |
| Private rented or lives rent free | 8.4% | 14.4% |

3.2.3 The table below shows Swainsthorpe parish household composition data from the 2011 and 2021 Census. There is a decrease in one person households and an increase in one family households and other household types between the 2011 and 2021 Census. Swainsthorpe parish has a higher percentage of one family households compared to Norfolk.

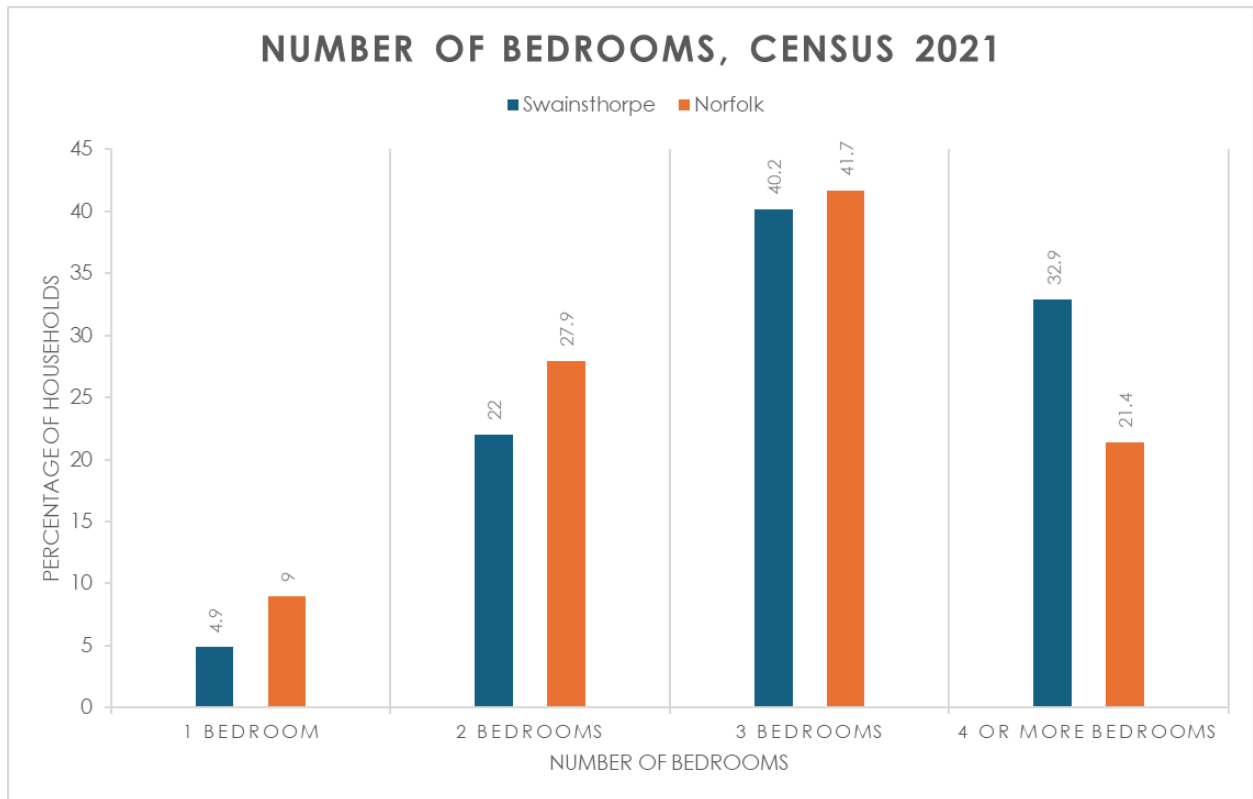
Figure 11 below: Table showing household composition from the 2011 and 2021 Census for Swainsthorpe parish.

Source: Nomis website. Information obtained 27.09.2024.

| Household Composition | Swainsthorpe Census 2011 percentage | Swainsthorpe Census 2021 percentage | Norfolk Census 2021 percentage |
|-----------------------|-------------------------------------|-------------------------------------|--------------------------------|
| All Categories | 100% | 100% | 100% |
| One person household | 26.0% | 22.7% | 31.0% |
| One family household | 72.1% | 73.6% | 63.6% |
| Other household types | 1.9% | 3.7% | 5.4% |

3.2.4 Census 2021 data showing percentage of households with the number of bedrooms in Swainsthorpe parish compared to Norfolk can be seen in the graph below. There is a higher percentage of households with 4 bedrooms in Swainsthorpe compared to Norfolk

Figure 12 below: Graph showing number of bedrooms for all households in Swainsthorpe and Norfolk. Census 2021.
Source: ONS Website via Build an Area Profile Tool. Obtained 27.09.2024.

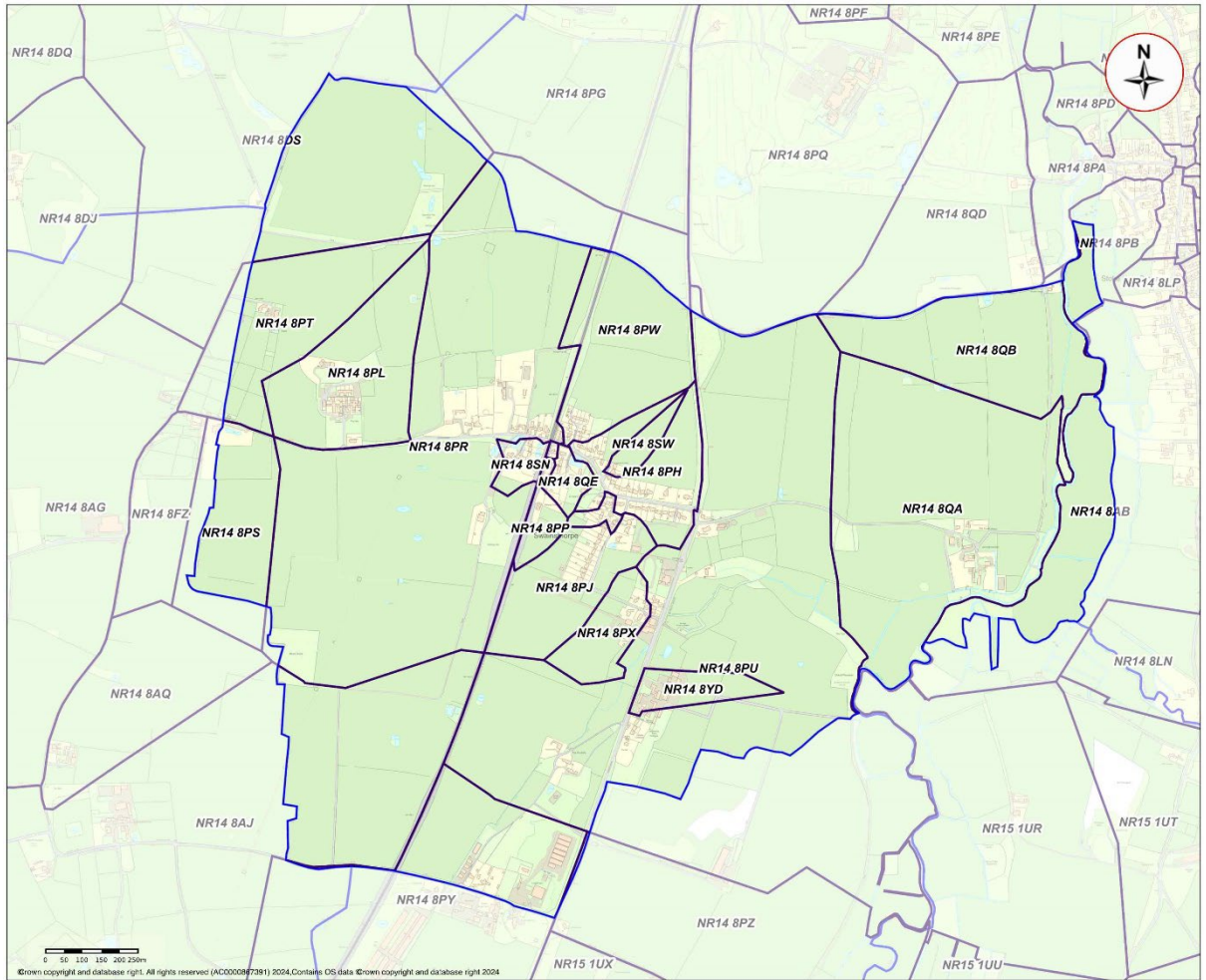


3.2.5 According to the property website Zoopla, the average sold price for a property in Swainsthorpe parish in the last 12 months is £296,250.¹³

3.2.6 A map showing postcode areas can be seen in Figure 13.

¹³ www.zoopla.co.uk. Information obtained 27.09.2024.

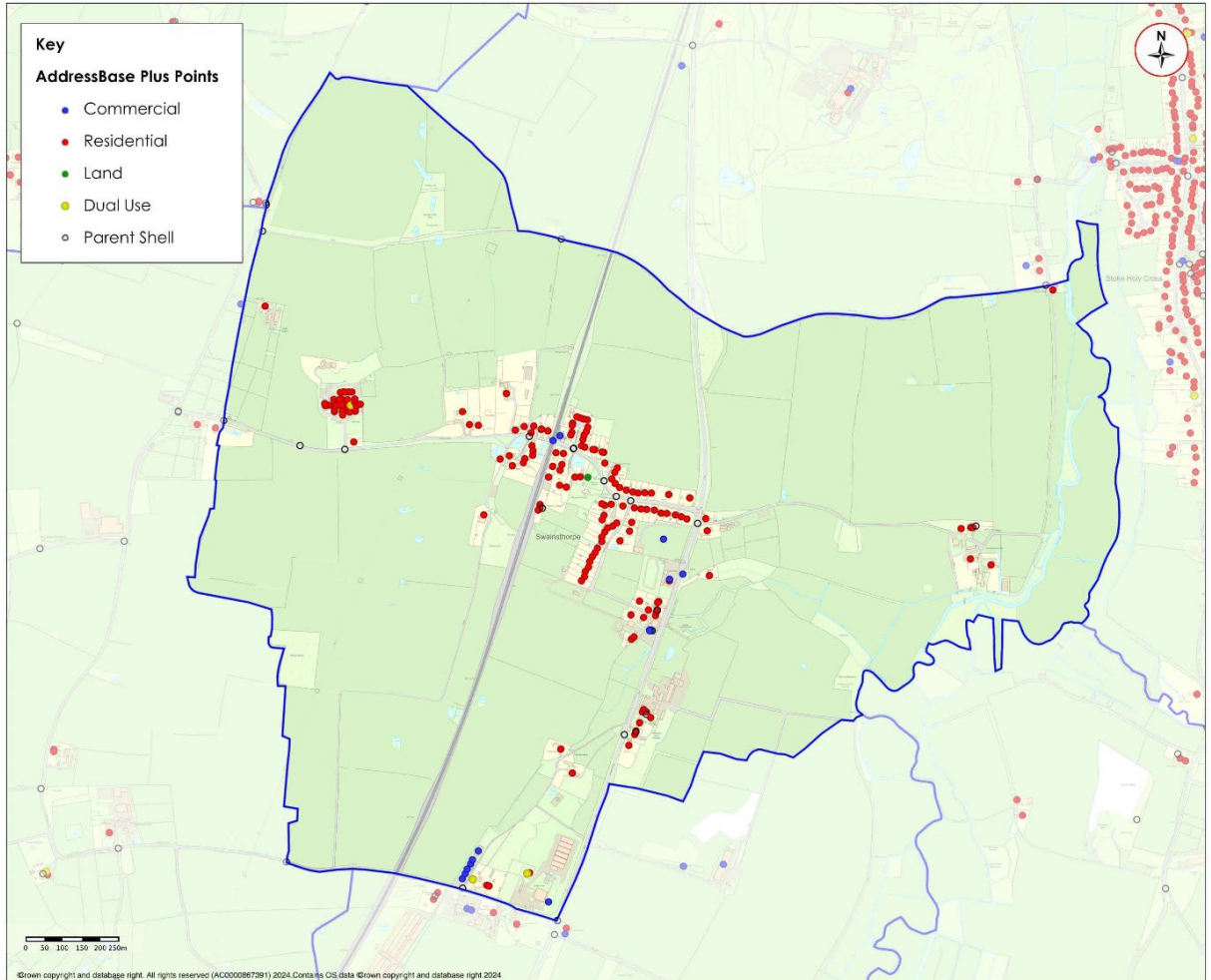
**Figure 13 below: Map showing postcode areas.
Source: Parish Online mapping website. Information obtained 25.09.2024.**



5.2.7 The map in Figure 13 shows AddressBase Plus Points, which are current properties and addresses sourced from local authorities, Ordnance Survey and Royal Mail.¹⁴

Figure 14 below: Map showing AddressBase Plus Points.

Source: Parish Online mapping website. Information obtained 25.09.2024.

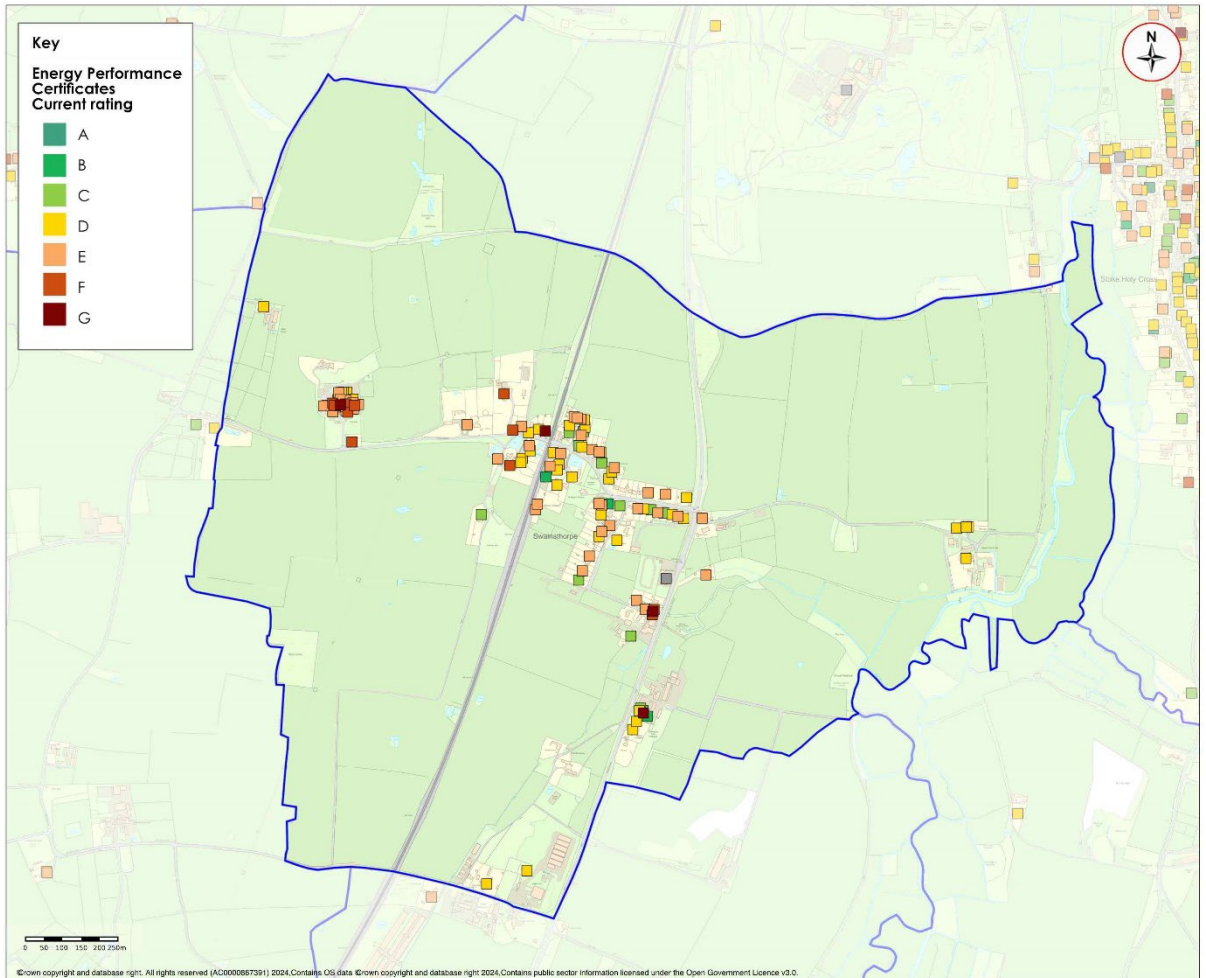


¹⁴ <https://www.ordnancesurvey.co.uk/products/addressbase-plus>. Information obtained 02.10.2024.

3.2.8 A map showing the Energy Performance Certificate current rating of buildings can be seen below.

Figure 15 below: Map showing the Energy Performance Certificate current rating of buildings.

Source: Parish Online mapping website. Map obtained 25.09.2024.



4. Community infrastructure

4.1 Population

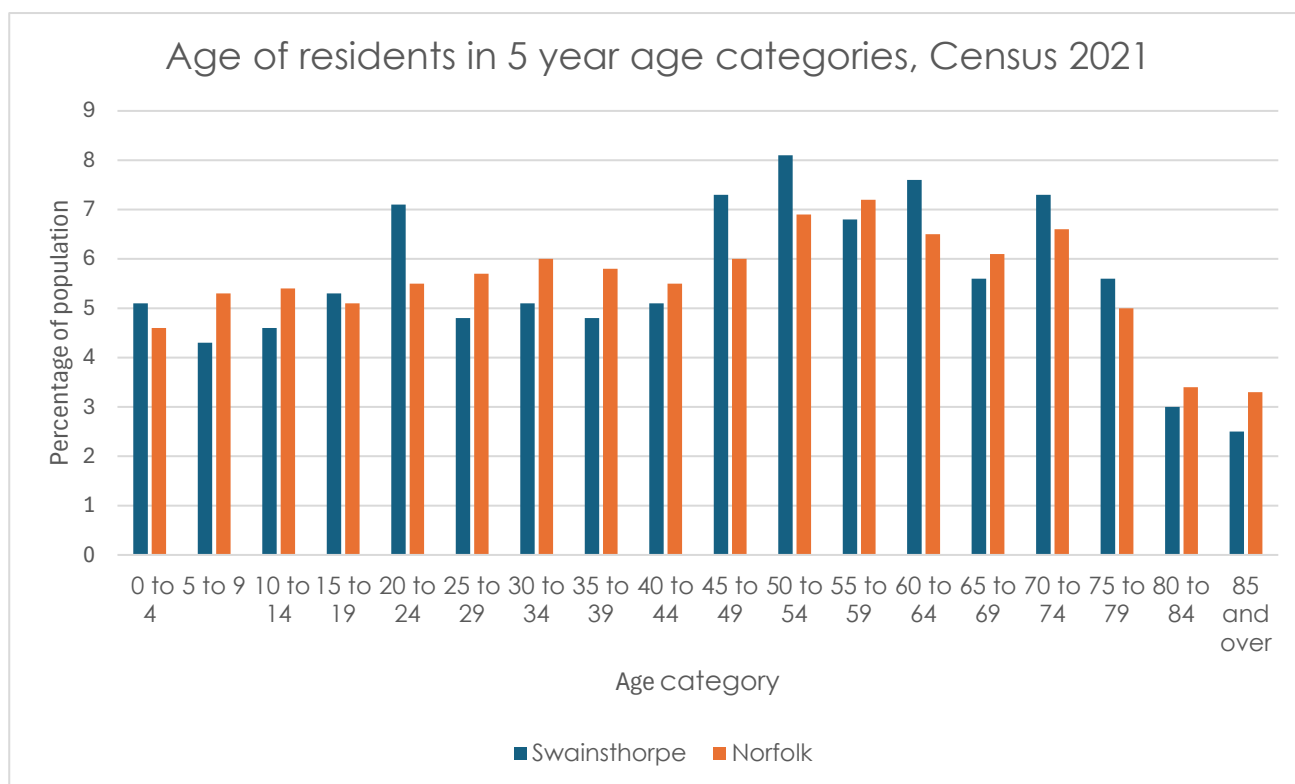
- 4.1.1 There were 360 usual residents of Swainsthorpe parish as at Census day 2011. Of these, 100% lived in households and 0% lived in communal establishments. The average (mean) age of residents was 41.7 years. In total there were 163 household spaces. Of these, 154 (94.5%) had at least one usual resident and 9 (5.5%) had no usual residents.
- 4.1.2 There were 392 usual residents of Swainsthorpe parish on Census day 2021. 50.3% of usual residents were males and 49.7% of usual residents were female. The parish population increased 8.9% between the 2011 and 2021 Census.
- 4.1.3 The following table shows the age categories in Swainsthorpe parish from the 2011 and 2021 Census. The percentage of the population aged 15 years and under has declined. The graph in Figure 15 shows the age of Swainsthorpe and Norfolk residents in 5-year age categories.

Figure 16 below: Age structure of Swainsthorpe parish Census 2011 and 2021.
Source: Nomis website. Information obtained 30.09.2024.

| Age category | Census 2011 number | Census 2011 percentage | Census 2021 number | Census 2021 percentage |
|------------------------|--------------------|------------------------|--------------------|------------------------|
| Total | 360 | 100% | 404 | 100% |
| Aged 15 and under | 72 | 20% | 61 | 15.1% |
| Aged 16 to 64 years | 219 | 60.8% | 242 | 61.1% |
| Aged 65 years and over | 69 | 19.2% | 96 | 23.8% |

Figure 17 below: Graph showing the age of Swainsthorpe and Norfolk residents in 5-year age categories. Census 2021.

Source: www.ons.gov.uk/visualisations/customprofiles/build/. Information obtained 30.09.2024.



4.2 Health and well-being

4.2.1 The following table shows how the population reported their general health in the 2021 Census. A higher percentage of Swainsthorpe residents reported very good health compared to South Norfolk district and Norfolk.

Figure 18 below: Table showing general health reported by the population in the Census 2021.

Source: Nomis website. Information obtained 30.09.2024.

| General Health Census 2021 | Swainsthorpe parish percentage | South Norfolk district percentage | Norfolk Percentage |
|----------------------------|--------------------------------|-----------------------------------|--------------------|
| Very good health | 53.4% | 46.4% | 43.1% |
| Good health | 32.5% | 35.8% | 36.5% |
| Fair health | 11.7% | 13.4% | 14.9% |
| Bad health | 1.9% | 3.5% | 4.3% |
| Very bad health | 0.5% | 1.0% | 1.2% |

4.2.2 The table below shows Disability reported by all usual residents of Swainsthorpe parish in the 2021 Census. 14.1% of the usual residents of

Swainsthorpe parish are Disabled under the Equality Act. This compares to 20.1% for Norfolk.

Figure 19 below: Table showing disability reported by all usual residents of Swainsthorpe parish in the 2021 Census.

Source: Nomis website. Information obtained 01.10.2024.

| Disability | Census 2021 |
|--|--------------|
| Total | 100% |
| Disabled under the Equality Act | 14.1% |
| Disabled under the Equality Act: Day-to-day activities limited a lot | 5.4% |
| Disabled under the Equality Act: Day-to-day activities limited a little | 8.7% |
| Not disabled under the Equality Act | 85.9% |
| Not disabled under the Equality Act: Has long-term physical or mental health condition but day-to-day activities are not limited | 6.4% |
| Not disabled under the Equality Act: No long-term physical or mental health condition | 79.4% |

4.2.3 There is a GP surgery located in Newton Flotman Surgery, St. Mary's Close and at Swan Lane in Long Stratton.¹⁵ Swainsthorpe parish is in the catchment area of Long Stratton Medical Partnership. Information from Keith Burnett, Practice Manager of Long Stratton Medical Partnership provided the following information on 13.02.2024 and confirmed it remained accurate on 07.10.2024: *'We have invested heavily in developing Long Stratton Medical Partnership in conjunction with our landlords, giving us 8 additional clinical rooms and re purposing office space / extending the car park in preparation for the planned housing expansion and bypass. Depending on population growth and demographic changes in the area, we will continue to monitor the demand for the services at Newton Flotman.*

As I am sure you are aware General Practice is primarily funded through our GMS income which is roughly £100 per patient per year. In order to increase our capacity at Newton to a full time surgery open Monday to Friday with 1 Receptionist, 1 Nurse, 1 GP, and 1 Dispenser – we would require an additional 800 patients to register with us, just to cover the salaries and on costs (pension & NI), without the additional service costs such as lighting, heating, and waste disposal on top. Over the coming 20 years a population growth of 800 in Newton Flotman is not beyond the realms of possibility, however it would require circa 300 homes being built and inhabited to do so. We do have scope at the rear of the building to create an extension, but would obviously need population growth to be exponential in order to fund and facilitate this.

¹⁵ <https://www.longstrattonsurgery.nhs.uk/>. Information obtained 12.02.2024.

There is no plan at this moment in time for us to even consider the closure of the Newton Flotman branch surgery. Its future with the current set of Partners is safe, however, what we don't know is how any potential political changes may affect General Practice, the way it is funded, or the macro view on Primary Care Networks and super practices from a Governmental direction of travel. There was talk from Labour, earlier last year, of dissolving the Partnership model and aligning General Practice to Hospital Trusts. We don't believe this to be a feasible plan by any means, however, it does illustrate that our Political Leaders do have some interesting views which may radically change what we do in Primary Care.

Assuming everything remains as it is, Newton Flotman surgery will continue to operate on a 3 day week basis for as long as we can foresee.'

4.3 Qualifications

- 4.3.1 11.7% of residents aged 16 years and over in Swainsthorpe parish have no qualifications. This compares to 17.1% for South Norfolk and 20.4% for Norfolk.

4.4 Deprivation

- 4.4.1 The Index of Multiple Deprivation (IMD) 2019 is the official measure of relative deprivation for small areas (or neighbourhoods) in England. The IMD ranks every small area (Lower Super Output Area) in England from 1 (most deprived) to 32,844 (least deprived). For larger areas we can look at the proportion of LSOAs within the area that lie within each decile. Decile 1 represents the most deprived 10% of LSOAs in England while decile 10 shows the least deprived 10% of LSOAs.¹⁶ The Index of Multiple Deprivation (IMD) combines information from seven domains to produce an overall relative measure of deprivation. The domains are: Income; Employment; Education; Skills and Training; Health and Disability; Crime; Barriers to Housing Services; Living Environment. Each domain is given a weighting and is based on a basket of indicators.
- 4.4.2 The following graphs are from Norfolk Insight website and show the data available for Newton Flotman ward, which includes Swainsthorpe parish.

¹⁶ <https://www.norfolkinsight.org.uk/deprivation/reports/#/view-report/e52c6f125f644323a2a9580ba51f811e/E05011883/G7>. Information obtained 01.10.2024.

Figure 20 below: Graph showing the Index of Multiple Deprivation – LSOAs by decile in Newton Flotman ward 2019.
Source: Ministry of Housing, Communities and Local Government via the Norfolk Insight website. Information obtained 01.10.2024.

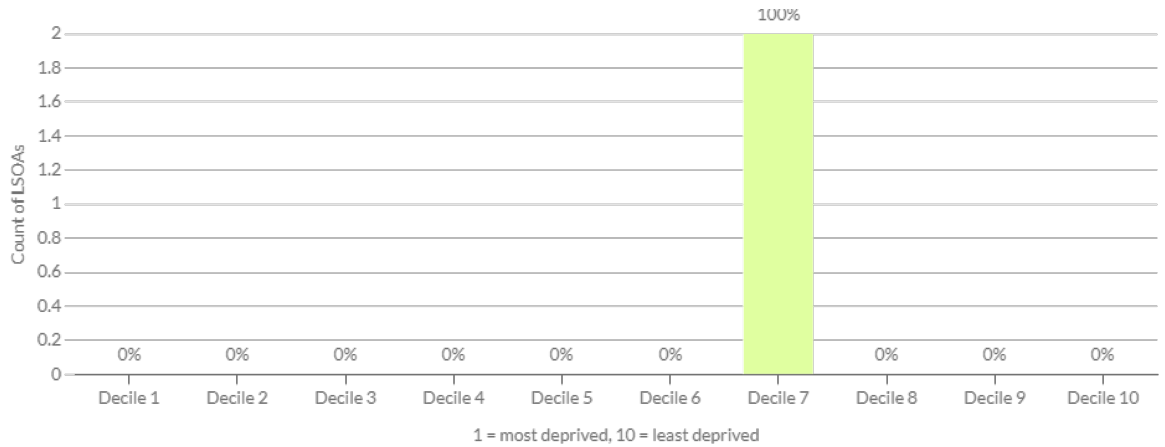
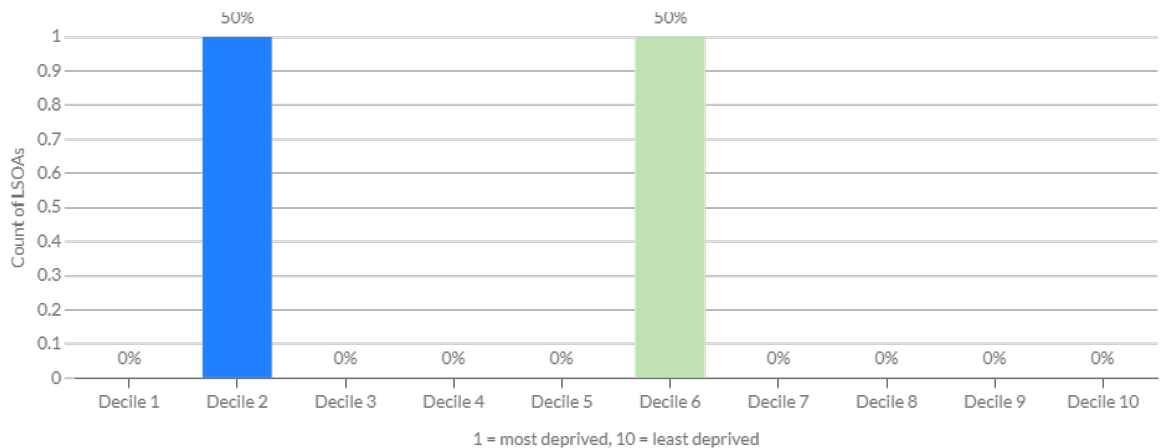


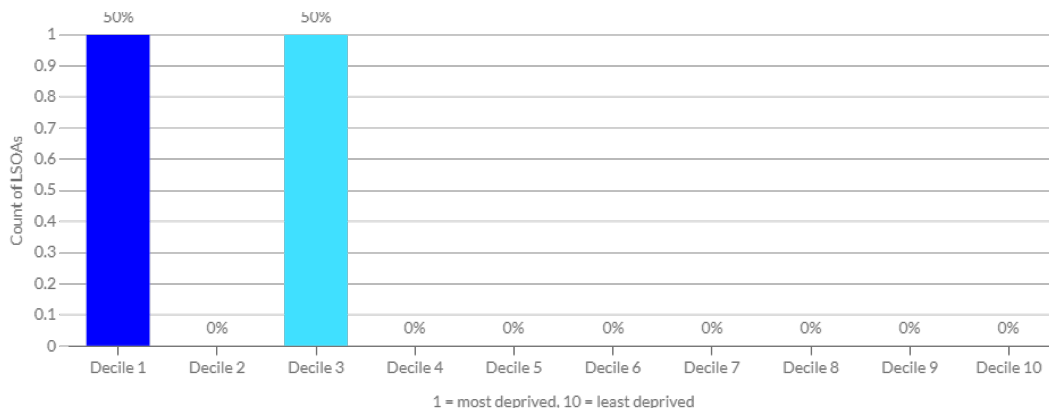
Figure 21 below: Graph showing the Index of Multiple Deprivation Living Environment Domain – LSOAs by decile in Newton Flotman ward 2019.
Source: Ministry of Housing, Communities and Local Government via the Norfolk Insight website. Information obtained 01.10.2024.



The Living Environment Deprivation domain measures the quality of the local environment. The indicators fall into two sub-domains. The 'indoors' living environment measures the quality of housing; while the 'outdoors' living environment contains measures of air quality and road traffic accidents.

Figure 22 below: Graph showing the Index of Multiple Deprivation Barriers to Housing and Services Domain – LSOAs by decile in Newton Flotman ward 2019.

Source: Ministry of Housing, Communities and Local Government via the Norfolk Insight website. Information obtained 01.10.2024.



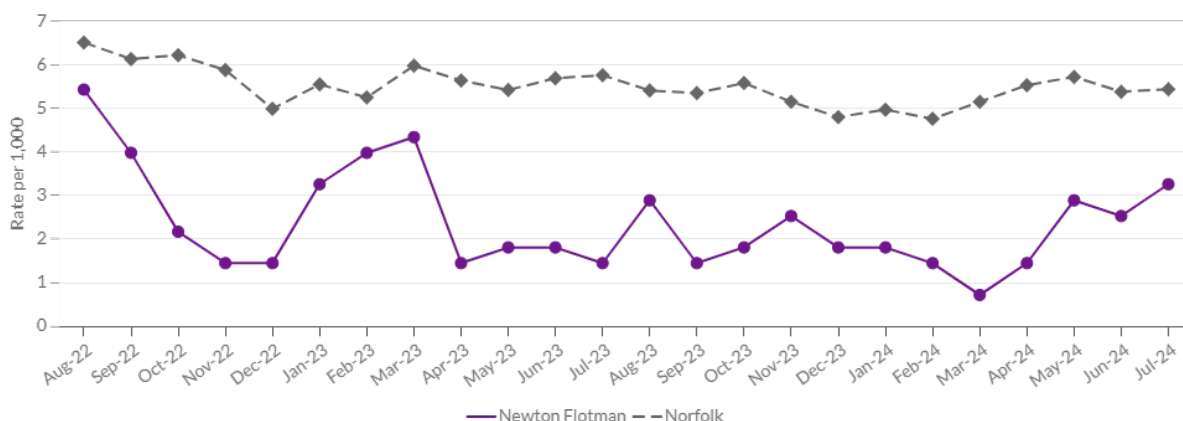
The Barriers to Housing and Services domain measures the physical and financial accessibility of housing and local services. The indicators fall into two sub-domains: 'geographical barriers', which relate to the physical proximity of local services, and 'wider barriers' which includes issues relating to access to housing such as affordability.

4.5 Crime

4.5.1 The crime rate for Newton Flotman ward August 2023 to July 2024 was 68.¹⁷

Figure 23 below: Graph showing All Crime – Monthly rates for Newton Flotman ward compared to Norfolk and England.

Source: Norfolk Insight website from data.police.uk. Information obtained 10.10.2024.



¹⁷ <https://www.norfolkinsight.org.uk/crime-and-community-safety/reports/#/view-report/77f07519768c4f4c994aec9cc78bcfa/E05011883/GZ>. Information obtained 01.10.2024.

4.6 Education

- 4.6.1 Swainsthorpe parish is in the catchment area for Newton Flotman C of E Primary Academy School. The school serves children aged 4 – 11 years old. The school is part of the Diocese of Norwich St Benet's Multi Academy Trust and part of the Long Stratton Cluster of Schools. There were 103 Pupils on Roll at the school in May 2024 and planned admission of 30 for both 2024/2025 and 2025/2026.
- 4.6.2 Swainsthorpe parish is within the catchment area of Long Stratton High School, which serves pupils aged 11 – 16 years old. There were 694 Pupils on Roll in May 2024 and a planned admission number of 150 for 2024/25 and 2025.26.¹⁸
- 4.6.3 Information provided by Norfolk County Council on 25.10.2024 states:

Swainsthorpe Parish falls within the catchment for Newton Flotman Primary, which is a primary feeder for Long Stratton but it is possibly closer to Framingham Earl High school based on a straight line distance.

The current catchment detail suggests over the last 5 years a number of children across the Swainsthorpe area have attended out of are schools such as Stoke and Mulbarton with a smaller number attending Newton Flotman.

Newton Flotman catchment suggests a gradual decline from 15 to 10 pupils over the next 3 years which will then gradually build up to approximately 20 pupils in the area. Parental preference suggests numbers will remain lower than capacity of the schools has which will mean families are likely to continue to select schools such as Stoke and Mulbarton. Both those schools catchments are set to reduce below their current operating PAN with limited housing anticipated across the area.

The families across Swainsthorpe should continue to get places in either Long Stratton or Framingham Earl based on their proximity to the schools and the current catchments for those schools being lower than the current operating PAN. Both Framingham Earl and Long Stratton are popular schools where they get a very positive parental preference drawing children from a wide area, the ability for children to access a place will depend on the individual criteria within the schools admissions policies.

Currently there are no known issues with transport, pupils get a bus linked to Long Stratton and primary provision is not currently required, through a mix of being under the statutory distance and if parental preference drives choice of schools, this would be the parents responsibility to get their child to school. Its likely based on the rurality of this community there are car journeys undertaken in order to move children around to the identified schools in most

¹⁸ <https://csapps.norfolk.gov.uk/schoolfinder/schoolinfo.asp?govid=4027>. Information obtained 30.09.2024.

cases. There is limited safe walking and cycle routes it would appear in this community in order to promote a more sustainable way of families transporting their children to school.

Figure 24 below: School information for Swainsthorpe pupils.

Source: Norfolk County Council. Information obtained 25.10.2024.

Swainsthorpe Neighbourhood Plan Data Profile
March 2025

| School | Type | Age | Capacity | NOR | PAN | Yr R | Yr1 | Yr2 | Yr3 | Yr4 | Yr5 | Yr6 | Yr7 | Yr8 | Yr9 | Yr10 | Yr11 |
|--------------------------|-----------------------|-------|----------|-----|-----|------|-----|-----|-----|-----|-----|-----|-----|-----|-----|------|------|
| Stoke Holy Cross Primary | Maintained | 4-11 | 210 | 193 | 30 | 29 | 29 | 29 | 24 | 29 | 27 | 26 | | | | | |
| Newton Flotman | St Benet's | 4-11 | 180 | 103 | 30 | 16 | 16 | 13 | 11 | 17 | 15 | 15 | | | | | |
| Mulbarton Primary | Maintained | 4-11 | 420 | 405 | 60 | 50 | 57 | 52 | 62 | 62 | 63 | 59 | | | | | |
| Long Stratton High | Enrich Learning Trust | 11-16 | 913 | 694 | 150 | | | | | | | | 158 | 147 | 136 | 151 | 102 |
| Framingham Earl High | Sapientia Trust | 11-16 | 909 | 793 | 160 | | | | | | | | 164 | 160 | 159 | 154 | 156 |

4.7 Community

- 4.7.1 The following information is taken from the Swainsthorpe Parish Council website and outlines community buildings, spaces and services in Swainsthorpe parish:
- St. Peter's Church
 - St Peter's Church a grade 11 listed building dating back to Saxon times. It is currently part of the Tasburgh Benefice which comprises six churches.
 - St Peter's Churchyard
 - The churchyard is still used for burials and maintained as a wild flower meadow, with advice from Norfolk Wild Life Trust. It is maintained regularly by volunteer villagers. Many unusual and rare plants have been identified in this ancient site.
 - There is a play area located on Church Road and is regularly monitored by the Parish Council as well as externally inspected on a regular basis.
 - Village Green
 - The Community Charity Trust manage the allotments.
 - Mobile library
- 4.7.2 A monthly village newsletter is called 'Partnership' is published by the Tas Valley Ministry.
- 4.7.3 Swainsthorpe has an Art Group, which meets weekly and a Craft Group.
- 4.7.4 Swainsthorpe Parish Council is a pro-active Parish Council with seven active councillors supported by a Parish Clerk who works two days a month. The statutory duties are delivered with limited resources as the population of the village and households is small which limits the income from precepts.
- 4.7.5 Swainsthorpe Parochial Church Council (PCC) organises Church- led events, one of which is currently raising funds to re-establish the ringing of the Church bells.
- 4.7.6 Swainsthorpe Community Charity Trust (SCCT) is a registered charity formed in the early 2000 in response to the possibility at that time, that the Church may close and be sold. The Trust and PCC worked together to raise funds and grants to undertake restoration works and re- purpose the body of the Church into a shared community space. The Church is now a jointly managed building between the Parochial Church Council and the Swainsthorpe Community Charity Trust. The Trust bought the village green and manages the allotments. The fundraising is through a sub-group called the Funding Ideas Group (FIGS) who hold an active programme of fundraising events throughout the year including an annual village fete.
- 4.7.7 The Parish Council is installing Village Gates on Church Road.
- 4.7.8 Swainsthorpe Parish Council Assets on 05.11.2024 were:
- Street lighting

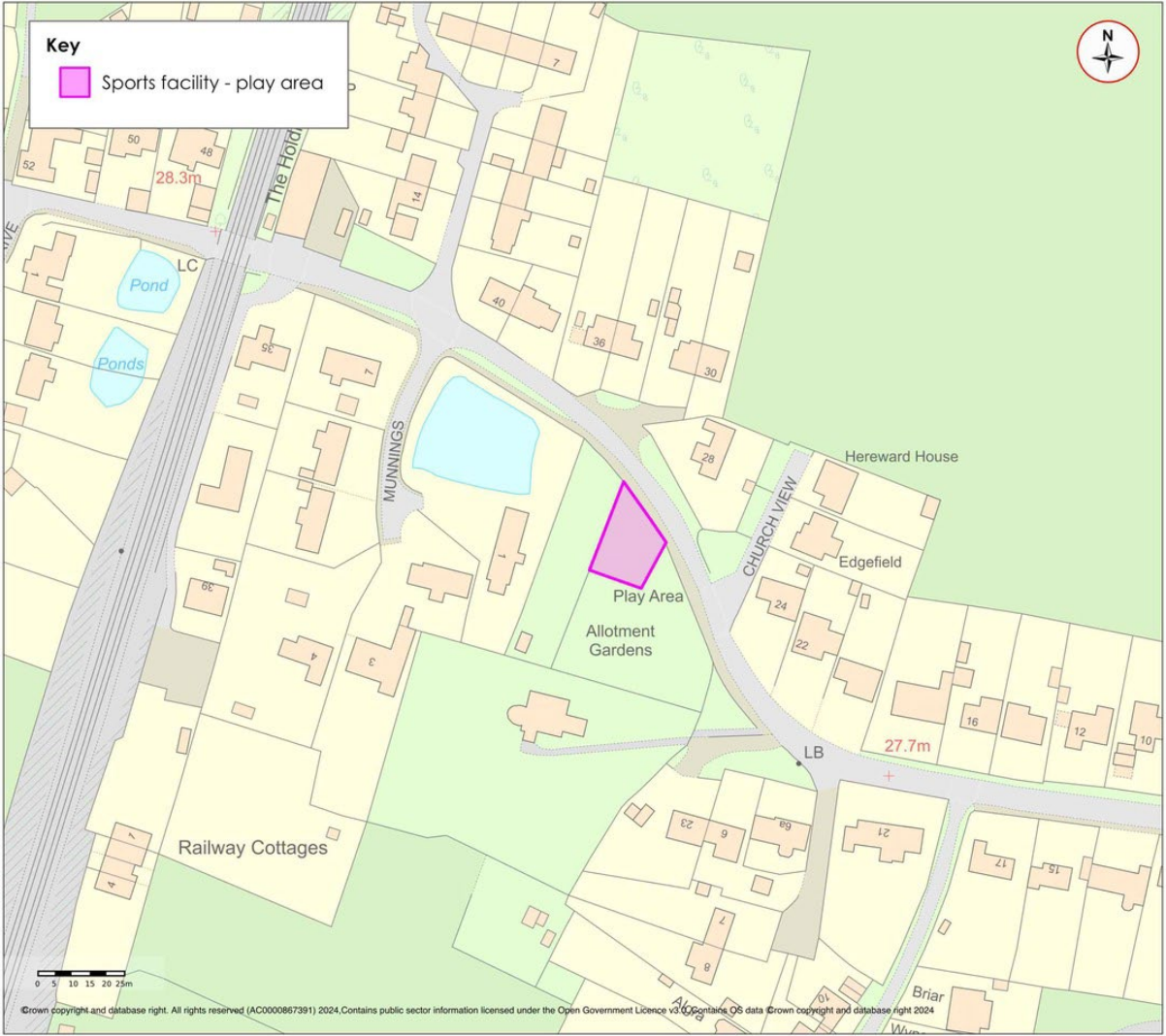
- Noticeboard
- Playground
- Jubilee Gardens rented from District Council
- Village Green
- Village sign
- Telephone box including defibrillator
- Waste bins and dog waste bins
- Millenium Green
- Recycling Centre
- Bus stops and bus shelters
- Village Gateways. These have been designed and commissioned but not yet installed.

4.7.8 Maps showing the location of community areas in the parish can be seen in below.

Figures 25 to 28 below: Maps showing the location of community areas in Swainsthorpe parish.

Source: Parish Online mapping website. Map obtained 05.11.2024.







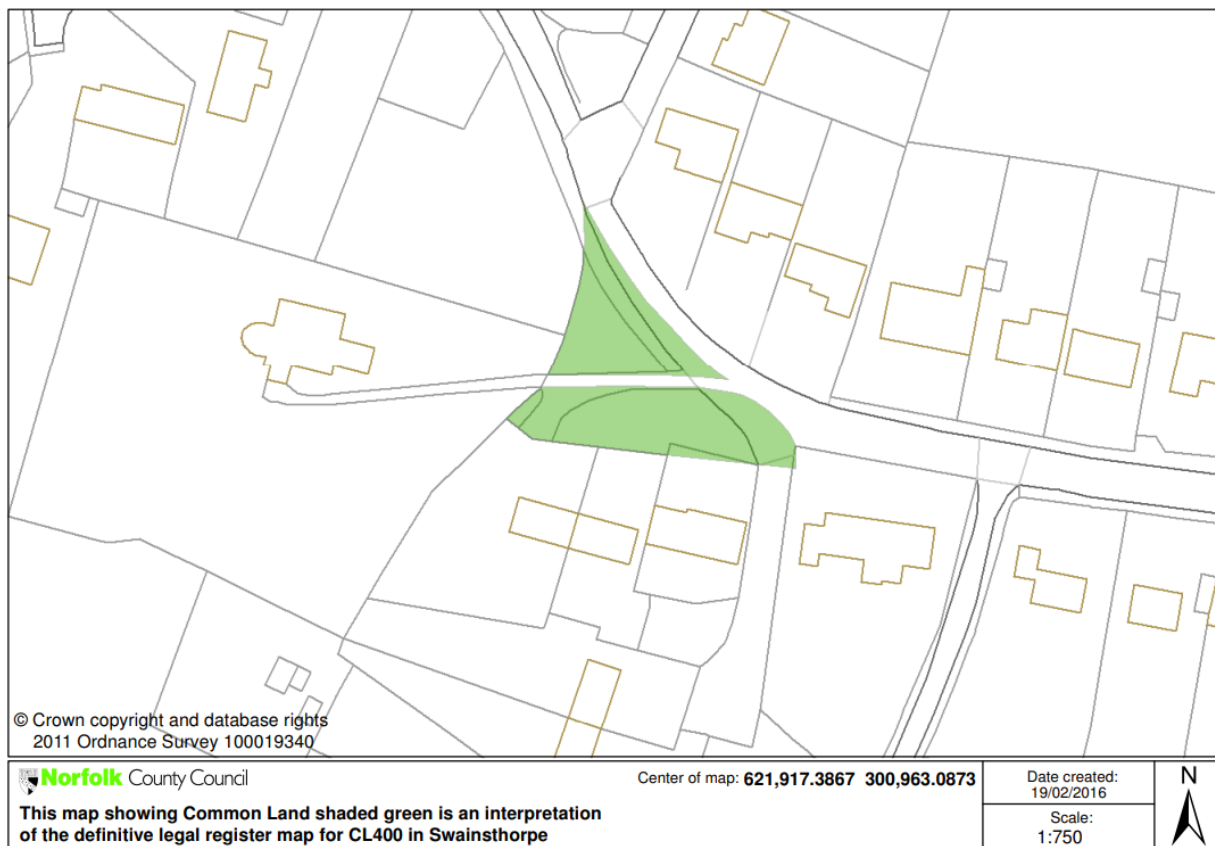
Swainsthorpe Neighbourhood Plan Data Profile
March 2025



4.7.9 There is one area of Common Land in Swainsthorpe parish, CL400.

Figure 29 below: Map showing Common Land area CL400 in Swainsthorpe parish.

Source: Norfolk County Council. Map obtained 08.01.2025.



5. Transport and accessibility

5.1 Public transport

5.1.1 Bus services that serve Swainsthorpe parish include:

- 1 Norwich – Long Stratton – Burston – Diss operated by Konectbus.
- 1A Norwich – Long Stratton – Tivetshall – Diss operated by Konectbus.
- 36, 36A, 36B Purple Line Long Stratton – Horsford and Long Stratton – Harleston operated by First Eastern Counties.
- 82 Norwich to Roydon operated by Simonds.
- 935 Swainsthorpe – Newton Flotman – Long Stratton High operated by First Eastern Counties.¹⁹

5.1.2 Bus Stops in Swainsthorpe parish include:

- Brick Kiln Lane.
- Church for bus service 935.
- Sugar Beet Eating House.

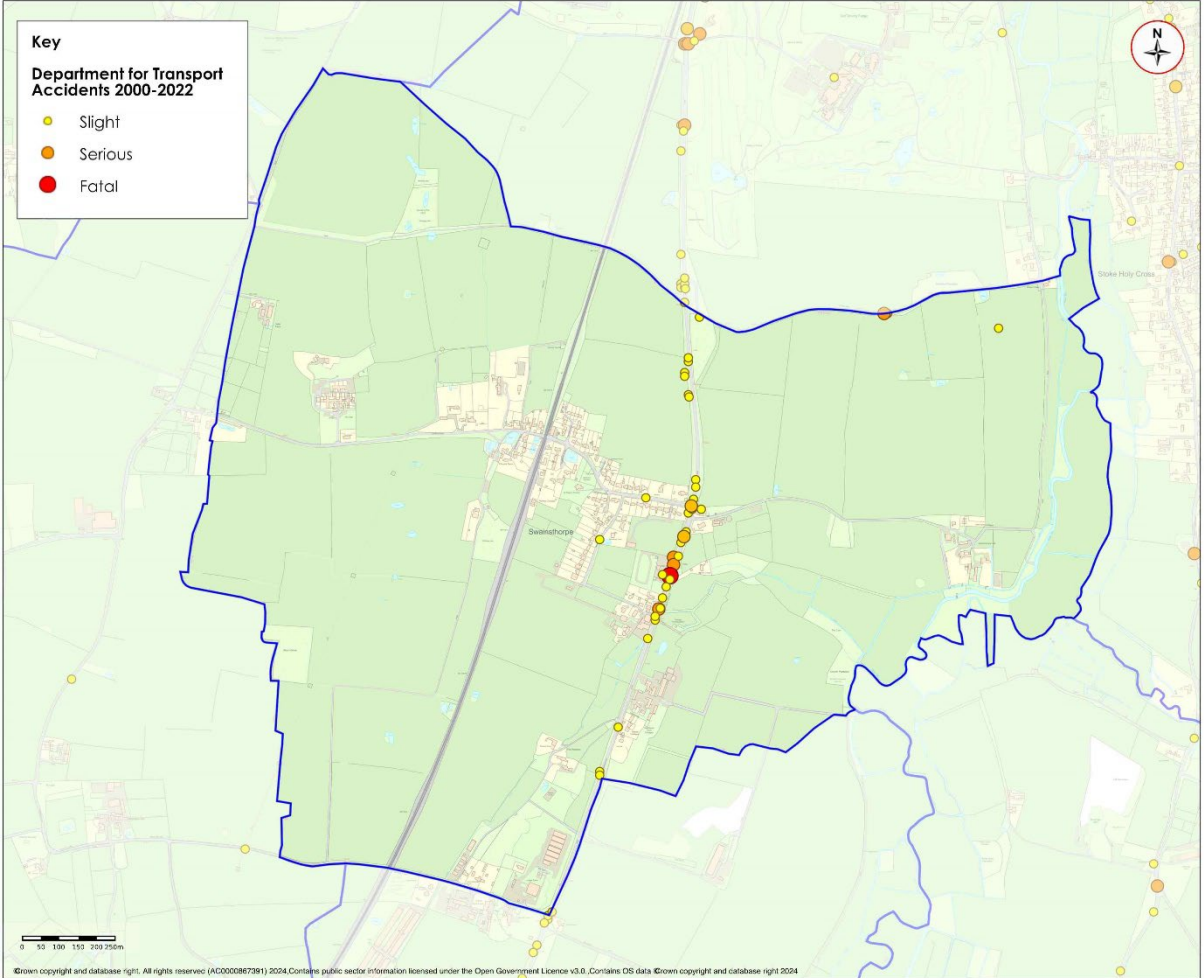
5.2 Traffic and pedestrian safety

5.2.1 A community speedwatch team has recently been set up in Swainsthorpe parish. Smiley Activated Message (SAM) signs have been ordered to be put at three locations on Church Road in Swainsthorpe.

5.2.2 A map showing the location of transport accidents 2000 – 2022 can be seen in the map below.

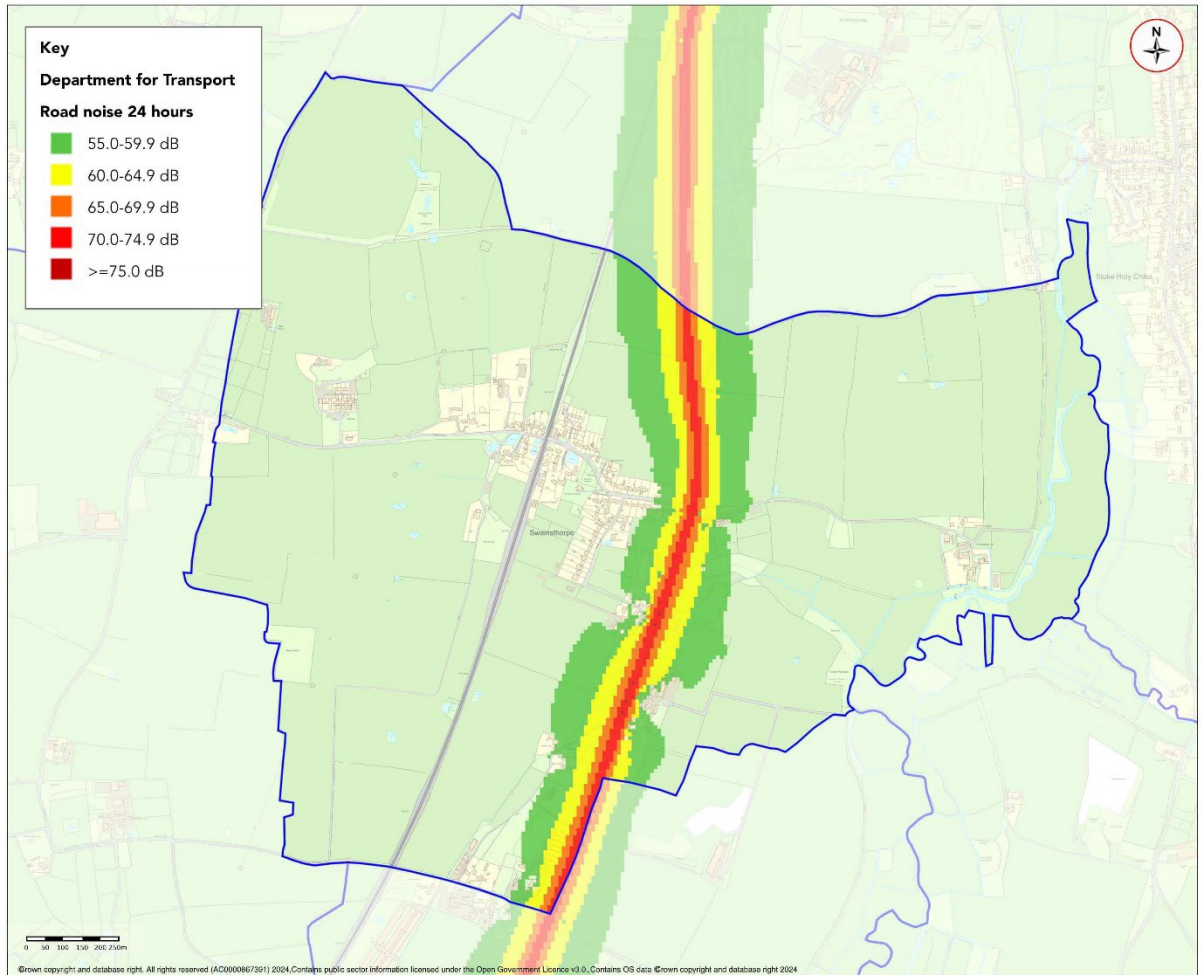
¹⁹ <https://bustimes.org/localities/swainsthorpe>. Information obtained 03.10.2024.

**Figure 30 below: Map showing Department for Transport Accidents 2000-2022.
Source: Parish Online Mapping website. Information obtained 03.10.2024.**



5.2.3 The map below shows road noise from the A140 in Swainsthorpe parish.

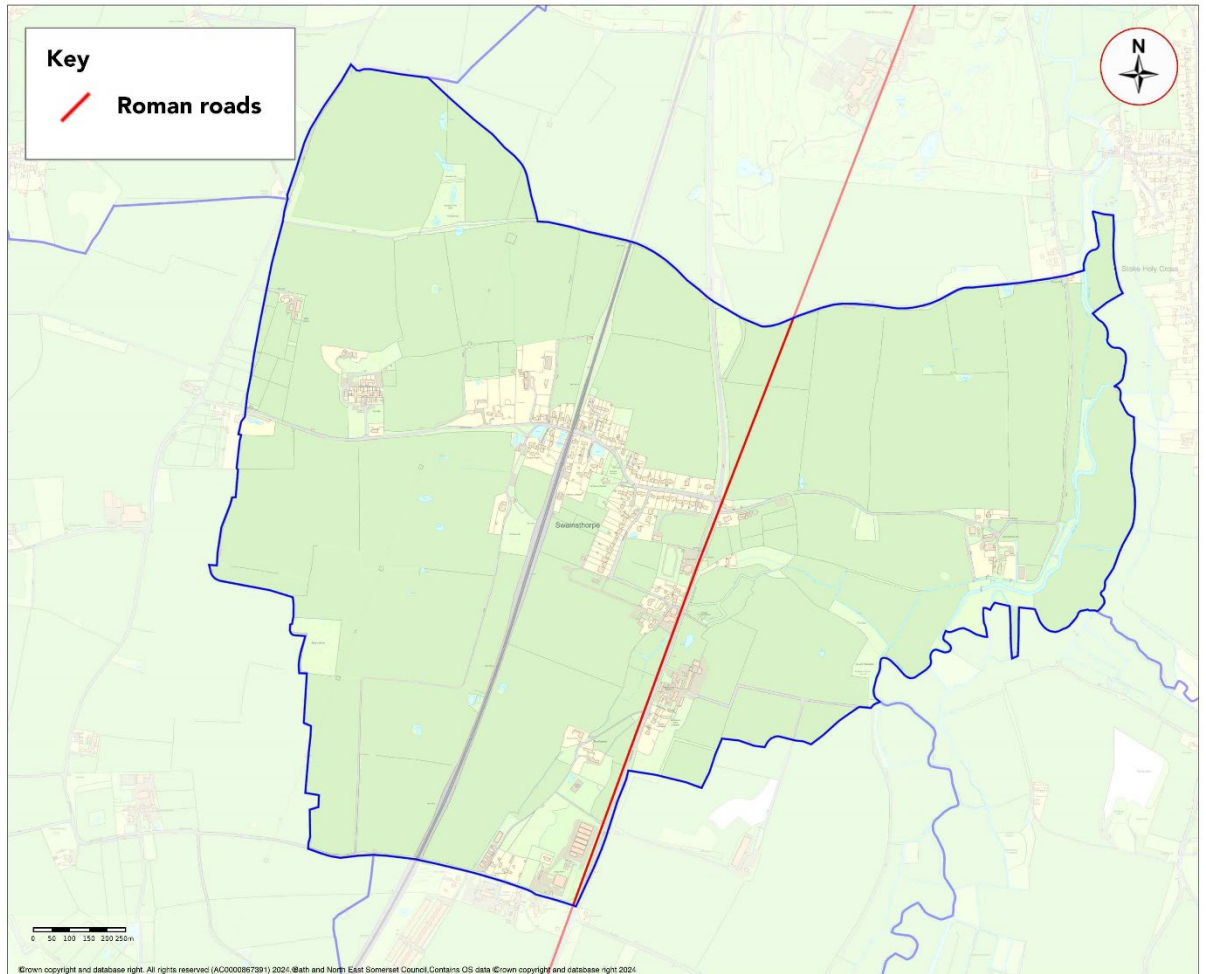
**Figure 31 below: Map showing Department for Transport Road Noise.
Source: Parish Online mapping website. Information obtained 03.10.2024.**



5.2.4 The map below shows the location of the Roman Road through Swainsthorpe parish, which was named The Pye Road. This was the major route into Norfolk and to Caister St Edmund from Colchester and London. It is now mostly overlain by the A140.²⁰

²⁰ <http://www.twithr.co.uk/norfolk/caistor-scole.htm>. Information obtained 03.10.2024.

**Figure 32 below: Map showing the location of The Pye Roman Road.
Source: Parish Online mapping website. Map obtained 10.10.2024.**



5.3 Public Rights of Way

5.3.1 Information taken from Swainsthorpe Parish Council's website about public rights of way is below:

Swainsthorpe's public rights of way described below are labelled in accordance with the 'Definitive Map' held by Norfolk County Council and listed below in geographical order, comprising:

- 1 Footpath
- 4 Bridleways
- 1 Byway open to all traffic (Hickling Lane)

Footpath No 1

Church Road to Gowthorpe Lane, situated 130 yards beyond the entrance to The Vale. It crosses fields running northwards and then bearing north-westward, to the junction of Hickling Lane with Gowthorpe Lane and connects with Bridleway No 7

Bridleway No 7

From the western end of Hickling Lane to the Parish boundary where it joins Swardeston's Bridleway No 9

Bridleway No 2

Church Road to Hickling Lane. The entrance to the bridleway is approx. 65 yards west of the level crossing and runs northwards to Hickling Lane.

Bridleway No 3

Briar Lane- runs from Church Road southwards and joins the A140 south of The Sugar Beat.

(Safest route is to cross the A140 onto the pavement on its eastern side, then re-cross the A140 at The Rookery to join Bridleway No 5)

Bridleway No 5

A140 to Brick Kiln Lane. The entrance to the bridleway is beside The Rookery running southwards emerging on Brick Kiln Lane
Byway open to all traffic No 6 (BOAT)

Hickling Lane

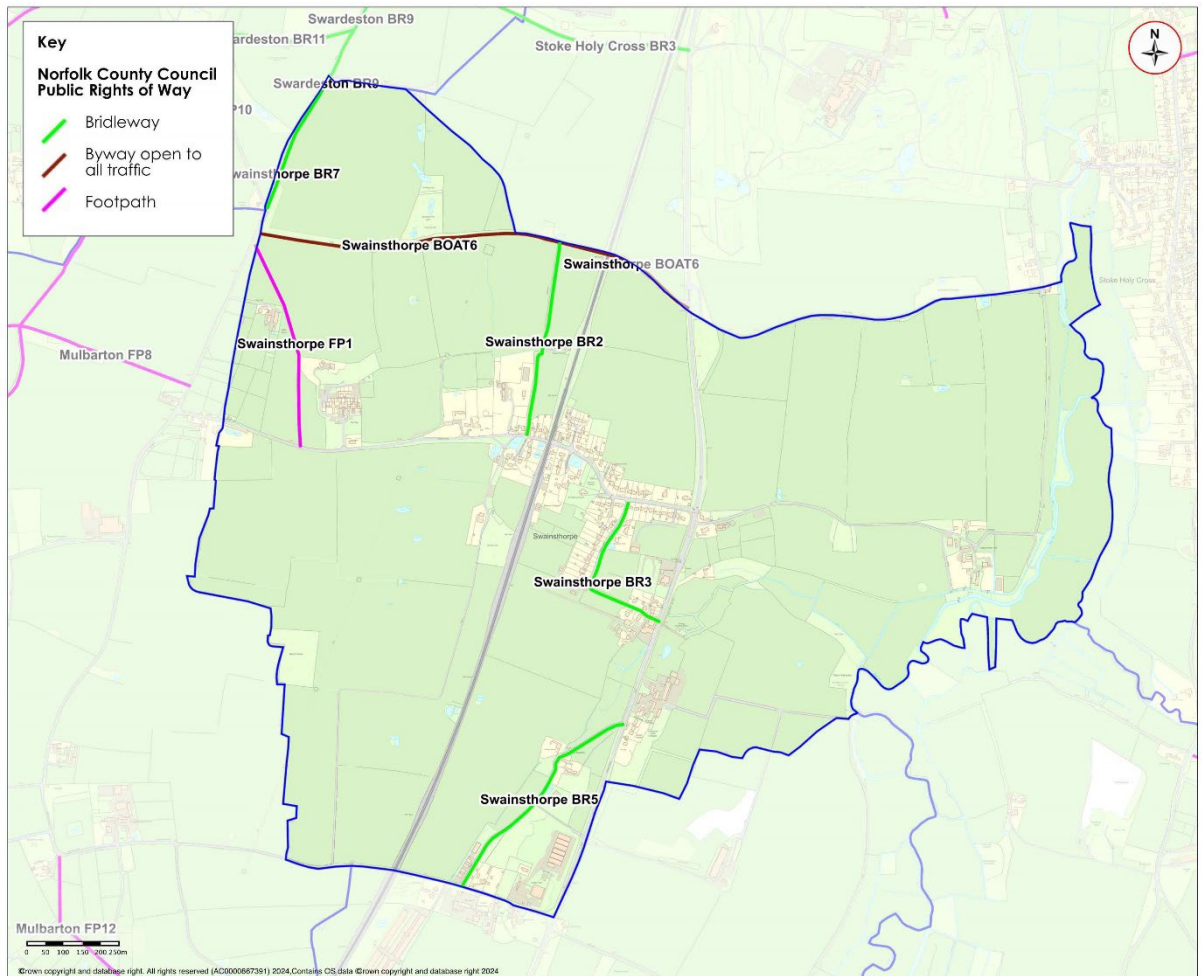
runs from the A140 nearly opposite the junction with Stoke Lane running westward over the railway bridge to Gowthorpe Lane.

Permissive Path- not a public right of way

From Hickling Lane to Church Road via Station Close. The path can be accessed from Hickling Lane at the eastern end of the railway bridge down 15 steps and runs southwards alongside the railway track and emerges in Station Close. It forms part of a popular circular walk utilising Bridleway No 2.

5.3.2 The map below shows Public Rights of Way in Swainsthorpe parish.

Figure 33 below: Map showing Public Rights of Way in Swainsthorpe parish.
Source: Parish Online mapping website. Annotations by Rachel Leggett & associates. Map obtained 10.10.2024.



5.4 Car ownership and travel to work

- 5.4.1 Data from the 2011 Census shows that 6.5 per cent of households in Swainsthorpe parish had no car or van. Data from the 2021 Census shows that for Swainsthorpe parish 4.2 per cent of households had no car or van and 95.8 per cent of households had 1 or more cars or vans.

Figure 34 below: Table showing Car Availability Census 2021.
Source: Nomis website. Information obtained 30.10.2024.

| Car Availability Census 2021 | Car availability Percentage Swainsthorpe parish | Car availability Percentage South Norfolk District | Car availability Percentage Norfolk |
|-------------------------------------|---|--|-------------------------------------|
| Total | 100 | 100 | 100 |
| No cars or vans in household | 4.2% | 10.5% | 17.4% |
| 1 or more cars or vans in household | 95.8% | 89.5% | 83.6% |

5.4.2 Data from the 2021 Census shows that of usual residents of Swainsthorpe parish without including those not in employment or aged 15 years and under, the main method of travel to workplace is driving a car or van, followed by working mainly at or from home.

5.4.3 Known quality information affecting travel to work data from Census 2021 is provided by the Office for National Statistics:

- The Office for National Statistics (ONS) collected Census 2021 responses during the coronavirus (COVID-19) pandemic, a period of unparalleled and rapid change; the national lockdown, associated guidance and furlough measures will have affected the travel to work topic.
- We provided extra guidance to respondents affected by the pandemic on how to respond to travel to work questions, but it is not clear how this guidance was followed.
- There was an increase in home working from 10.3 per cent in 2011 to 31.2 per cent in 2021, but the government advised people to stay at home and only attend work if you had no alternative; there are also several other aspects to consider when interpreting results for this topic.
- As designed, we did not collect any workplace address information for those working at home, including those following government guidance to do so.
- Large numbers of people were still being supported by government furlough schemes, and it is not clear how the question guidance provided was followed; some people may have provided travel information for the last time they worked, or they may have answered based on their behaviours on Census Day.
- Restrictions on travel ended later in 2021, and while there will have been a shift back towards some behaviours from before COVID-19, hybrid and home working remain commonplace.
- We are researching the potential of using alternative data sources and modelling methods to produce travel to work statistics on a more frequent and timely basis, including workday populations and hybrid working patterns.²¹

²¹

<https://www.ons.gov.uk/employmentandlabourmarket/peopleinwork/employmentandemployeetypes/methodologies/traveltoworkqualityinformationforcensus2021>. Obtained 06.10.2021.

Figure 35 below: Table showing Method of Travel to Work Swainsthorpe parish, Census 2021.

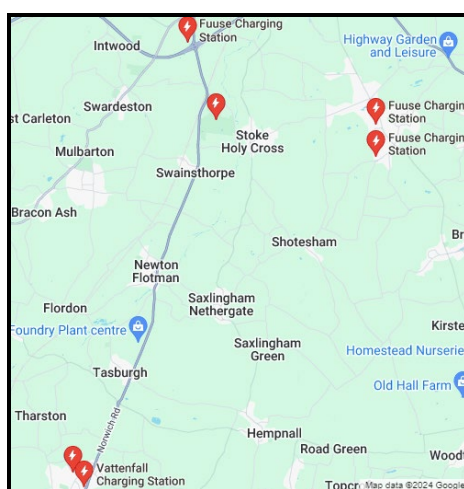
Source: Nomis website. Information obtained 03.10.2024.

| Method of travel to workplace Swainsthorpe parish Census 2021 <i>Not including 191 residents not in employment or aged 15 years and under.</i> | 2021 Census Number | 2021 Census Percentage |
|---|--------------------|------------------------|
| Total | 213 | 100% |
| Work mainly at or from home | 80 | 37.6% |
| Underground, metro, light rail, tram | 1 | 0.5% |
| Train | 1 | 0.5% |
| Bus, minibus or coach | 2 | 0.9% |
| Taxi | 1 | 0.5% |
| Motorcycle, scooter or moped | 1 | 0.5% |
| Driving a car or van | 112 | 52.6% |
| Passenger in a car or van | 4 | 1.8% |
| Bicycle | 3 | 1.4% |
| On foot | 6 | 2.8% |
| Other method of travel to work | 2 | 0.9% |

5.4.4 The map below shows the location of car charging points available for the public to use.

Figure 36 below: Map showing the location of car charging points. Charging point locations denoted by red circle.

Source: Google maps. Obtained 03.10.2024.



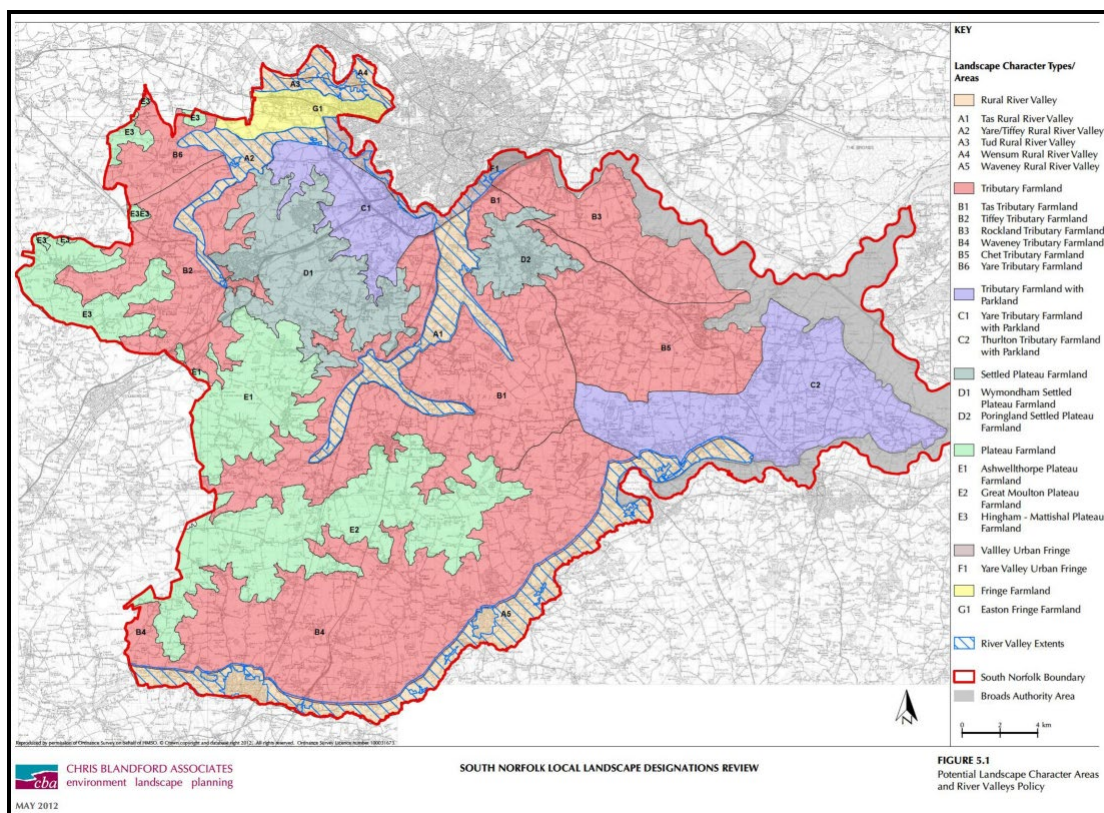
6. Natural environment

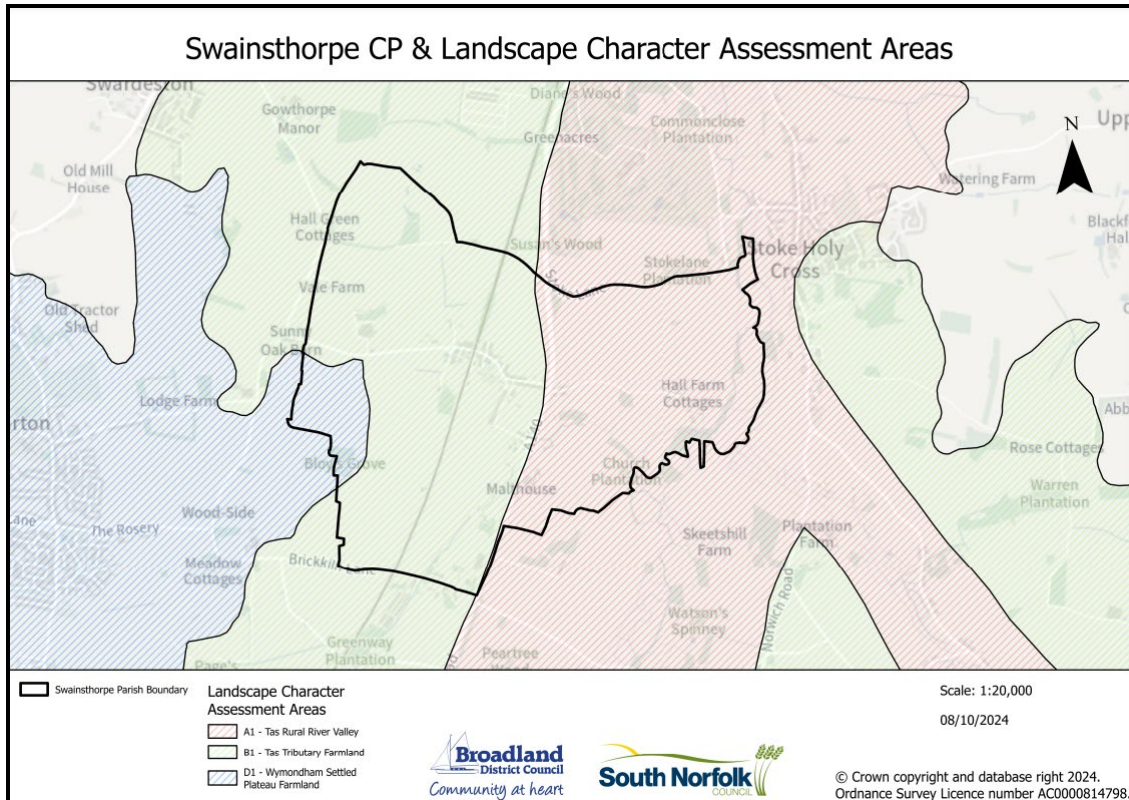
6.1 Landscape character

6.1.1 The South Norfolk Landscape Local Landscape Designations Review 2012, identifies the parish of Swainsthorpe as A1 Tas Rural River Valley, B1 Tas Tributary Farmland and D1 Wymondham Settled Plateau Farmland.

Figure 37 and 38 below: Map showing the Local Landscape Designations in South Norfolk.

Source: The South Norfolk Landscape Local Landscape Designations Review 2012. Information retrieved 02.10.2024.





6.1.2 The description of A1 Tas Rural River Valley is:

Location and Boundaries: The Tas Rural River Valley runs in an approximately south to north direction through the heart of the Norwich Policy Area from Tasburgh in the south to the Norwich Southern Bypass in the north. Most of the character area is within the Norwich Policy Area with a small part extending to the Rural Policy Area. The boundaries are defined topographically, in relation to the top of the valley sides and roughly follow the 30m contour, except where human influences have caused a distinct change in character. For example, in the lower part of the valley the A140 defines the boundary on the west side as the road creates a clear division on the upper valley side.

6.1.3 The key characteristics of the Tas Rural River Valley are:

- Distinct, moderately wide simple valley form with medium-scale clearly defined flat valley floor, shallow side slopes and adjoining smaller-scale tributary valleys.
- Less enclosed than some other valleys with a feeling of exposure and openness and some long views within the valley but restricted external views.
- River alternately visible and hidden marked by sparse waterside vegetation including reed filled ditches and narrow woodland belts. The flat, wide, green valley floor is a distinctive feature.
- A large number of attractive fords and small bridges occurring at regular intervals along the river and side tributaries.
- Pastoral valley floor with cattle grazing and distinctive willow pollards lining the watercourses on the valley floor.

- Upper tributary valleys of great ecological richness and importance, including areas of fen, marsh and unimproved wet and neutral grassland.
- Fragmented woodlands and shelterbelts on the valley sides creating a wooded fringe to much of the valley interspersed with more open areas of arable land.
- Presence of historic earthworks including Scheduled Ancient Monuments, including the large highly visible defensive earthworks of Venta Icenorum and the earthworks at Tasburgh.
- Sparsely settled character with buildings clustered around fording points and at the top of the valley sides.
- Characteristic vernacular buildings particularly notably including weather boarded mill houses and Dutch gable ends.
- Presence of a small number of distinctive halls and parkland including English Heritage listed parkland at Rainthorpe Hall.
- Network of narrow peaceful rural lanes throughout the valley including sunken lanes.
- A more disturbed character in the north of the area due to the influence of pylons, railway and roads.
- Role in dividing and defining east and west of South Norfolk District

6.1.4 The sensitivities and vulnerabilities of the Tas Rural River Valley Character Area include:

- The peaceful rural character of the Tas Valley and the sensitivities to incremental small scale change, including upgrading of the rural lane network (e.g. kerbing would be very detrimental to the character of the sunken lanes which are a feature of the valley, with their small fords and river crossings);
- Particular vulnerabilities in the northern part of the valley due to the impact of infrastructure and large scale land uses relating to the urban edge of Norwich including pylons, golf courses and development in association with the transport corridors (A140 and A47);
- Visual sensitivities of the Tas Valley to new development/landscape change as a result of its open character, wide flat floor and long valley views, plus importance of valley crests;
- Loss of hedgerow boundaries and trees, resulting in a further opening up of the landscape creating some very large scale and bleak areas on valley sides;
- Small scale development pressures (infill, residential extensions) within the valley which could, over time, erode the local rural vernacular and the sense that buildings are well-integrated within the landscape context;
- Sensitivity of historic landscapes, particularly Caistor St. Edmund to visual intrusion.

6.1.5 The overall Landscape Strategy for the Tas River is to conserve the peaceful, rural quality of the Tas Valley and its distinctive landscape character, created by the wide open pastoral valley floor with ecologically rich wetland habitats, important archaeological earthwork resource, and perceived scarcity of settlement. This will include:

- Conservation and enhancement of the important wetland habitats. There is an opportunity to reinstate wetland habitats and landscapes to link together the existing isolated designated sites. The moderately wide floodplain and absence of settlement on the valley floor, suggests the Tas Valley would be a good candidate to consider such management;
- Restoration of hedgerows on the valley sides, plus management of the small woodland blocks. There are also opportunities for further woodland planting to create a more enclosed character on the valley sides;
- Maintain the character of the rural lane network and particularly the sunken lanes with their fords and bridge crossings, which characterise the area;
- Consider implementing a more targeted landscape strategy for the northern part of the valley (north of Stoke Holy Cross) – maintaining openness around Venta Icenorum, but with opportunities for landscape/habitat restoration within the valley and screening along the main transport corridors.

6.1.6 Development considerations are that any development must respect the character of the Tas Rural River Valley and conserve and enhance the key landscape assets as described in the landscape character assessment. In particular it must seek to maintain the peaceful rural qualities of the valley. This will include reference to the following considerations:

- Respect the sparsely settled character of the valley, with its occasional buildings of local rural vernacular character, with a clear relation to the landscape context;
- Maintain the distinctive settlement pattern, either nucleated around bridges or around ford crossing points or as linear settlements along roads on the valley sides. The objective should be to maintain the linear settlements (e.g. Stoke Holy Cross) as discrete areas and prevent gradual and incremental extension along the roads;
- Consider the impact of developments within the adjacent landscape character areas, particularly the higher land of the Tas Tributary Farmland (character area B1) on the character of the rural valley. The openness of parts of the valley and views that can be obtained make it particularly vulnerable;
- Ensure that the northern part of the Tas Valley is not further degraded, by large scale of infrastructure developments associated with the roads. Ensure the rural character of the area adjacent to the Norwich Southern Bypass is maintained;
- Consider the impact of any proposals on the rural lane network;
- Maintain the role of the sparsely-settled Tas Valley in dividing the more settled areas to the east and west and avoid developments that may create the impression of developed corridors running across the valley.²²

6.1.7 The description of B1 Tas Valley Tributary Farmland is:

²² www.southnorfolkandbroadland.gov.uk/downloads/download/308/south-norfolk-landscape-character-assessments Information obtained 02.10.2024.

Location and Boundaries: The Tas Tributary farmland is a large area of land encompassing the Tas River Valley character area. Located in the heart of South Norfolk, it lies at an elevation of between about 30m AOD and up to 50m AOD. The character area is bounded to the north, south and west by surrounding Plateau areas. To the east the character area adjoins Chet Tributary Farmland and Waveney Tributary Farmland. The character area lies within the Rural Policy Area with a small portion to the north lying within the Norwich Policy Area.

6.1.8 The Key Characteristics of the Tas Tributary Farmland are:

- Open, gently undulating to flat and sloping landscape incised by shallow tributary valleys, the tributary streams of which are not prominent landscape features.
- Large open arable fields of cereal, sugarbeet and occasionally sweetcorn.
- Framed open views across the countryside and into adjacent character areas.
- Small blocks of deciduous woodland of high ecological and visual quality. These create wooded horizons which add variety to and create intimacy within the landscape.
- Damp grasslands of ecological importance located within the tributary valleys.
- Scattered remnant hedgerow trees, particularly oak, sometimes including intact avenues lining the roads or marking former, denuded, field boundaries.
- Transportation corridors including main connecting roads.
- Network of recreational footpaths.
- Ditches, low banks and wide grass verges associated with the network of rural roads.
- Settlement characterised by a small number of large villages including the administrative centre of South Norfolk – Long Stratton - with smaller hamlets, scattered farmhouses and agricultural buildings.
- Mixed vernacular of timber-frame, stepped and Dutch Gables, thatch and round-towered churches.

6.1.9 The principal sensitivities and vulnerabilities of the landscape to change are considered to be:

- The small scale dispersed pattern and vernacular character of settlement and potential for incremental development and infill;
- Further loss of vegetation structure including woodland and hedgerows from the landscape which would lead to a greater sense of openness;
- Gently sloping topography and open landscape making this area sensitive to intrusion by tall and large elements, including large farm buildings and pylons;
- Potential for adverse effects upon views in the north of this character area to/from Norwich and the Bypass;
- Key reciprocal views to and from The Broads.

6.1.10 The landscape strategy for the Tas Tributary Farmland is to maintain the open and agricultural character of the landscape, conserve the ecological value of the area and protect key views. Enhancement of the landscape should include active management of the woodlands and grasslands, conservation and restoration of key hedgerows and replanting of hedgerow trees, particularly adjacent to roads. In particular:

- Consider strategies and explore screening options to reduce the visual and aural impact of the A140, A47(T) and other transportation corridors (railways) on the rural ambience of this area and adjacent character areas – particularly the Tas Valley;
- Develop a targeted woodland strategy to reinforce the wooded horizons and create additional woodland habitats, and conserve and manage existing woodland/coppice.

6.1.11 Any development permitted should respect the character and features of the Tas Tributary Farmland including:

- Respect the existing small-scale and dispersed settlement pattern
- Avoid infill and edge development that would result in merging of settlements;
- Ensure any developments respect the vernacular character of existing settlements and avoid urbanising of rural lanes and loss of grass verges and hedges forming property boundaries;
- Maintain positive views of the Tas Tributary Farmland from the Norwich Southern Bypass and to/from the City of Norwich;
- Consider the impact of any development upon the skyline and sense of openness of the character area;
- Maintain positive views to/from Venta Icenorum in the Tas Valley;
- Consider the impacts of any development upon the nature of the relationship of Long Stratton to Norwich and upon Long Stratton's perceptual role at the geographical and administrative heart of South Norfolk. Please note, the administrative centre is now at Broadland Business Park.

6.1.12 The description of D1 Wymondham Settled Plateau Farmland is:

Location and Boundaries: The Wymondham Settled Plateau Farmland occurs to the southwest of Norwich, above contour level 40m AOD. It covers a large part of the Norwich Policy area and includes the medium sized settlements of Wymondham and Hethersett.

6.1.13 The key characteristics of D1 Wymondham Settled Plateau Farmland are:

- A settled landscape with large edge-of-plateau towns (including market towns and those of more modern origin) and villages plus smaller, nucleated settlements which are dispersed across the plateau.
- Large expanse of flat landform with little variation over long distances with strong open horizons – the archetypal 'Norfolk' landscape of popular imagination.
- Large scale open arable fields including sugarbeet, cereal and oilseed rape monocultures creating simple, often monotonous, character.

- Long views from plateau edge, including to Norwich from the northern plateau edge.
- Poor hedgerows generally, which accentuates the openness of the landscape. The resulting wide verges beside roads often contain attractive wildflowers. Some mature hedgerow trees are found, particularly beside roads, which are a distinctive feature. Areas of more intact hedgerow network sometimes occur around settlements.
- Sparsely wooded but with occasional woodland blocks, sometimes associated with former parkland areas, creating a more wooded character and wooded horizons in parts of this generally open landscape.
- Vernacular buildings particularly brick built, timber framed, and stepped gables. Some isolated churches, sometimes hidden by dense screening churchyard vegetation.
- Historic Market Town at Wymondham.

6.1.14 The principal sensitivities and vulnerabilities of this character area have been identified. They include:

- Imposition of insensitive developments and tall structures such as masts/grain silos and other large scale farm or industrial/commercial buildings that break up the skyline and intrude upon the sense of openness;
- Loss of vernacular character particularly as a result of sprawl from the edge of the existing plateau top settlements;
- Developments that intrude upon the view to important landmarks, e.g. Wymondham Abbey or the City of Norwich;
- Further "opening-up" of the landscape through loss of woodland, hedgerows or hedgerow trees;
- The potential for settlement coalescence particularly associated with the vulnerable A11 corridor or B1172 between Wymondham and Hethersett.

6.1.15 The overall strategy for the Wymondham Settled Plateau Farmland is to maintain its open agricultural landscape character, with its distinct pattern of concentrated settlement on the plateau edge with more dispersed nucleated villages and isolated farm buildings across the plateau top. At the same time there is an opportunity to enhance landscape character through conservation and restoration of features including:

- Restoration of hedgerows and field boundaries, particularly at settlement edges where vegetation could help integrate settlement into the landscape;
- Woodland management (including former parklands) and, where appropriate, woodland creation to screen intrusive developments and enhance the 'wooded horizon' whilst retaining the positive aspects of openness;
- Restoration and enhancement of the landscape adjacent to the A11 corridor.

6.1.16 Any development must respect the character of the Wymondham Settled Plateau Farmland. This will include reference to the following criteria:

- Respect the distinctive settlement pattern comprising concentrations of development at plateau edge locations and smaller nucleated village settlements and dispersed buildings across the plateau;
- Maintain the nucleated clustered character of the settlements and limit edge sprawl out into the adjacent landscape; well planned infill and edge development may be acceptable;
- Consider (cumulative) impact of all tall structures such as masts, energy developments, farm buildings on skyline views and sense of 'openness' and particularly on views to the plateau skyline from the surrounding lower tributary farmland;
- Maintain key views from the plateau edge to/from the City of Norwich;
- Maintain strategic gaps between settlements, and in particular prevent further growth of Wymondham and/or Hethersett which would lead to coalescence of settlement along the A11 leading to the merger of Wymondham/Hethersett or Hethersett/Norwich.

6.2 Biodiversity and geodiversity

6.2.1 Swainsthorpe Parish Council requested a search from the Norfolk Biodiversity Information Service, the results are available for the Neighbourhood Plan Steering Group with an interactive map to view the species, sites and habitats.²³

6.2.2 Roadside Nature Reserve 13 (Cutting) is within Swainsthorpe parish and the location of this can be seen on the map from the Suffolk Biodiversity Information Service. The environmental designations outside Swainsthorpe parish include

- Norfolk Valley Fens, Special Area of Conservation (SAC) approximately 5.1km south west.
- River Wensum, SAC approximately 8km north.
- Broadland, Ramsar/ Special Protection Area (SPA) approximately 9km north east.
- The Broads, SAC approximately 9km north east.
- Dunston Common, Local Nature Reserve (LNR) approximately 1km north east.

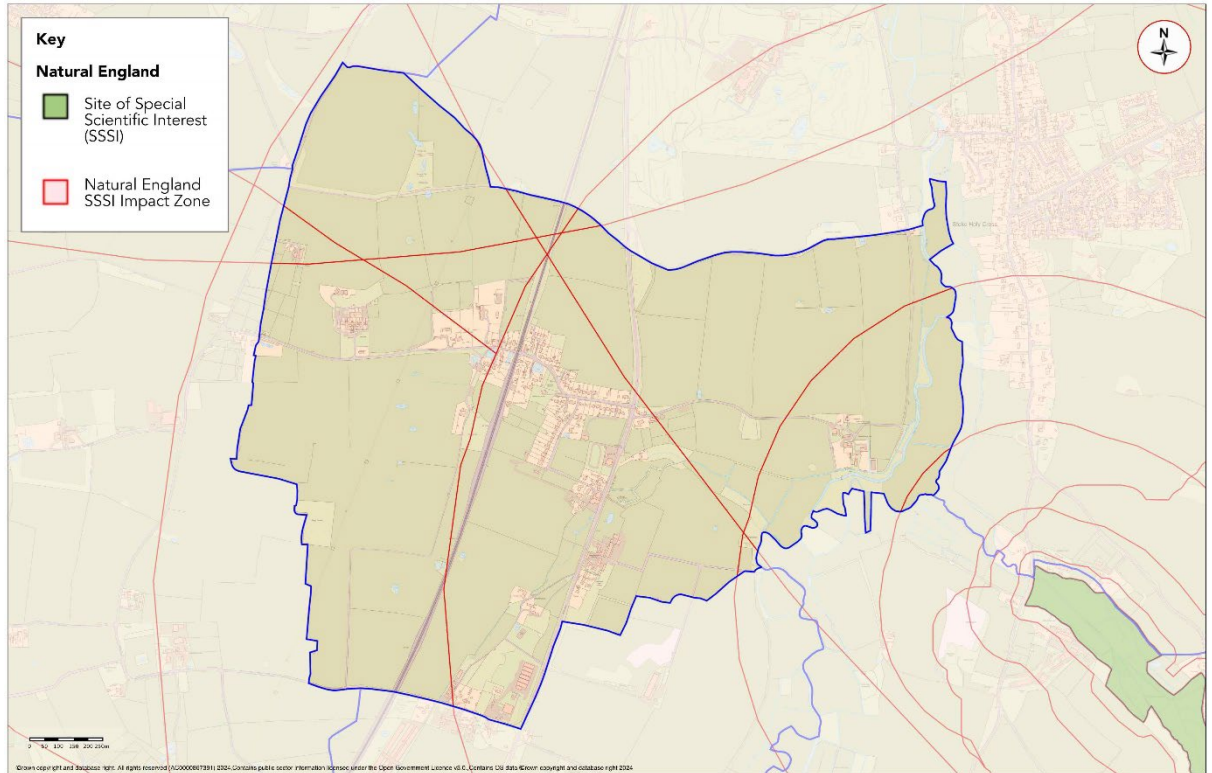
6.2.3 Swainsthorpe parish is covered by SSSI Risk Impact Zones. The Impact Risk Zones (IRZs) are a GIS tool developed by Natural England to make a rapid initial assessment of the potential risks to SSSIs posed by development proposals. They define zones around each SSSI which reflect particular sensitivities of the features for which it is notified and indicate the types of development proposals which could potentially have adverse impacts.²⁴

²³ <http://www.nbis.org.uk/data-enquiries>. Information obtained 29.02.2024.

²⁴ [SSSI IRZ User Guidance MAGIC.pdf \(defra.gov.uk\)](#) Information obtained 25.09.2021.

Figure 39 below: Map showing the SSSI Risk Zones covering Swainsthorpe parish.

Source: Parish Online with annotations by Rachel Leggett & associates. Map obtained 02.10.2024.

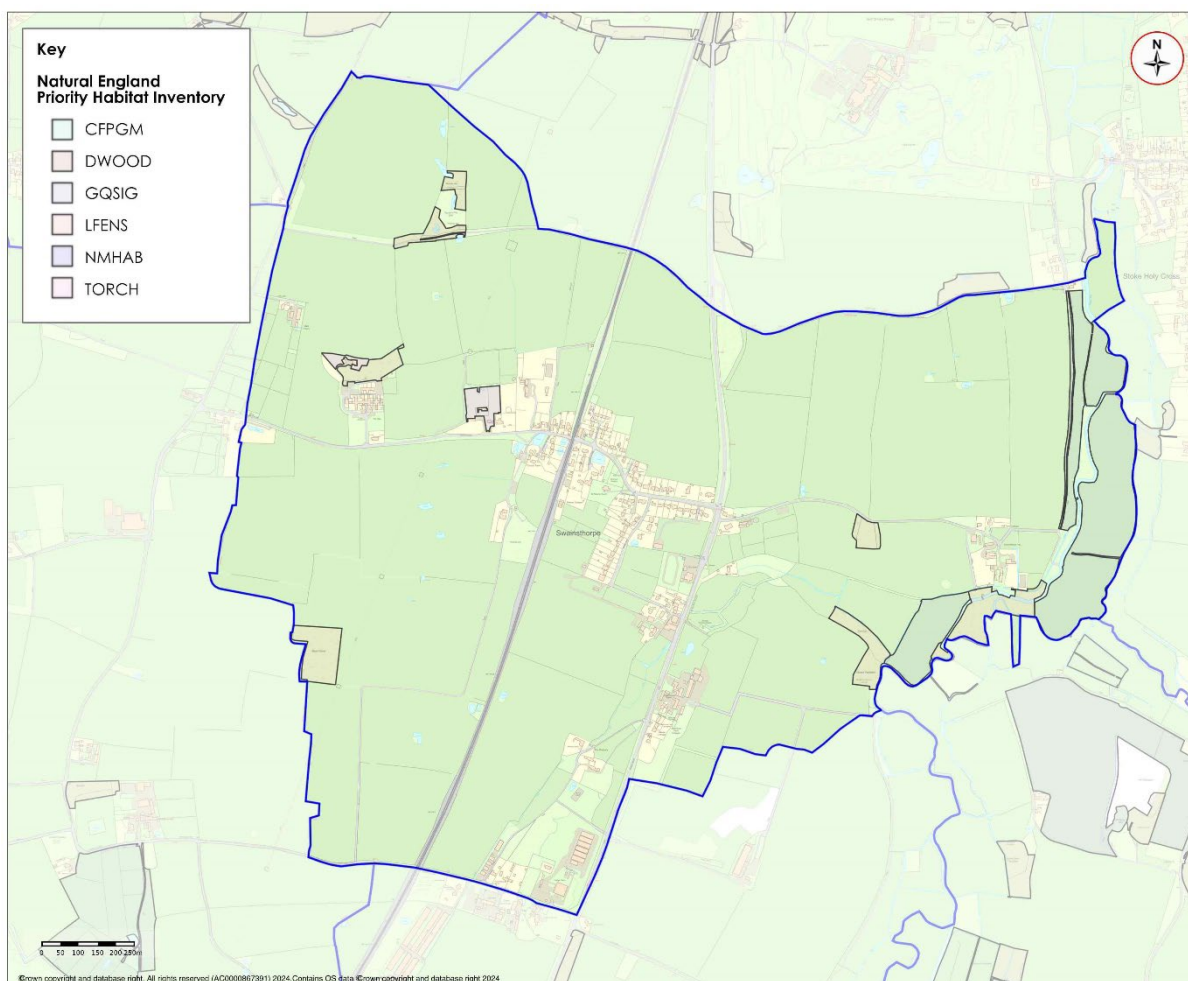


6.2.4 A map showing Priority Habitat Inventory habitats can be seen below. This is a spatial dataset that describes the geographic extent and location of Natural Environment and Rural Communities Act (2006) Section 41 habitats of principal importance.²⁵

²⁵ <https://naturalengland-defra.opendata.arcgis.com/datasets/39403df11c8044d998772db5b54ad86c/explore>. Information obtained 02.10.2024.

Figure 40 below: Map showing Natural England Priority Habitat Inventory habitats.

Source: Parish Online Mapping website. Obtained 10.10.2024.

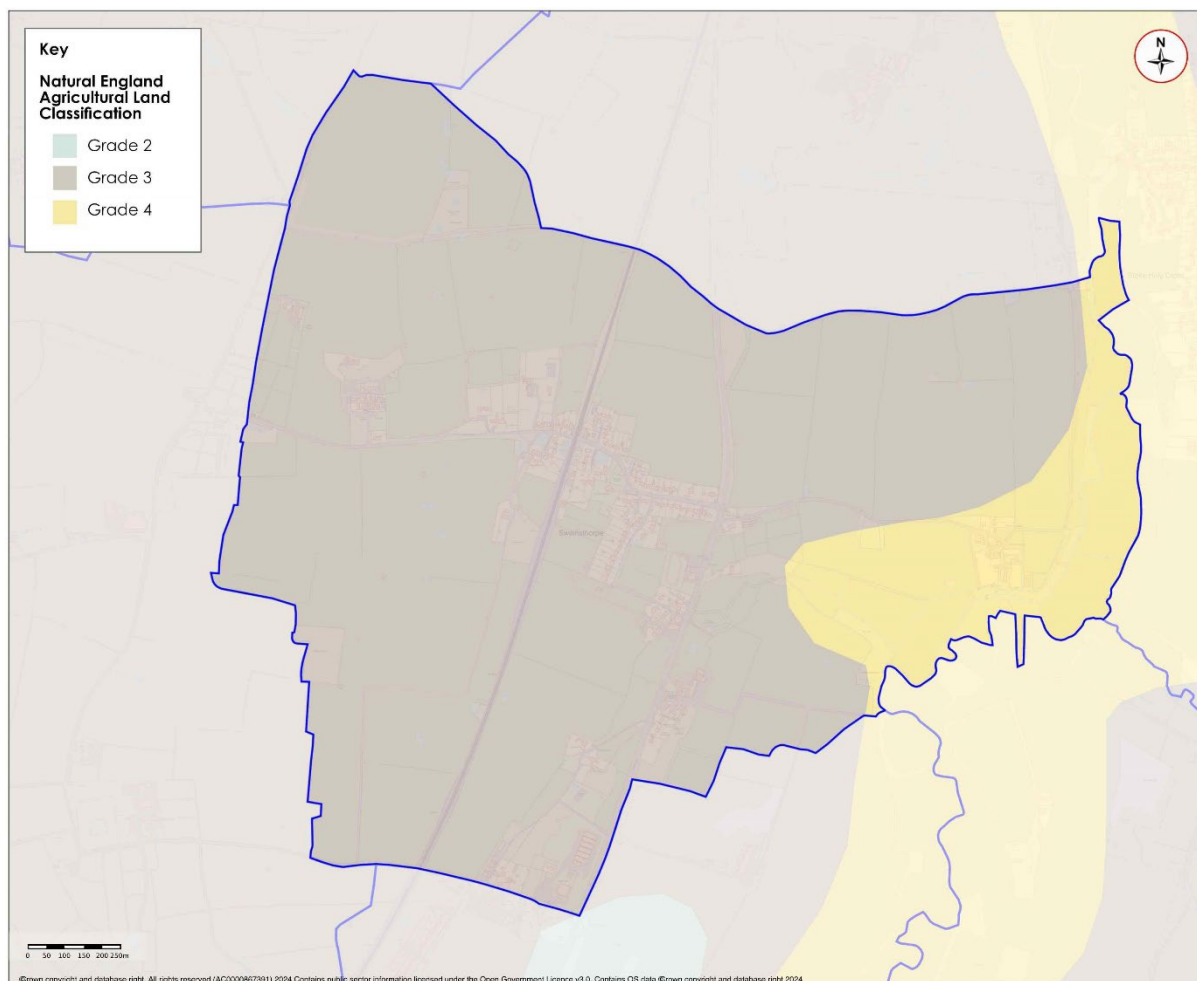


Key

- CFPGM: Coastal and floodplain grazing marsh
- DWOOD: Deciduous woodland
- GQSIG: Good quality semi-improved grassland
- LFENS: Lowland fens
- NMHAB: No main habitat
- TORCH: Traditional orchards

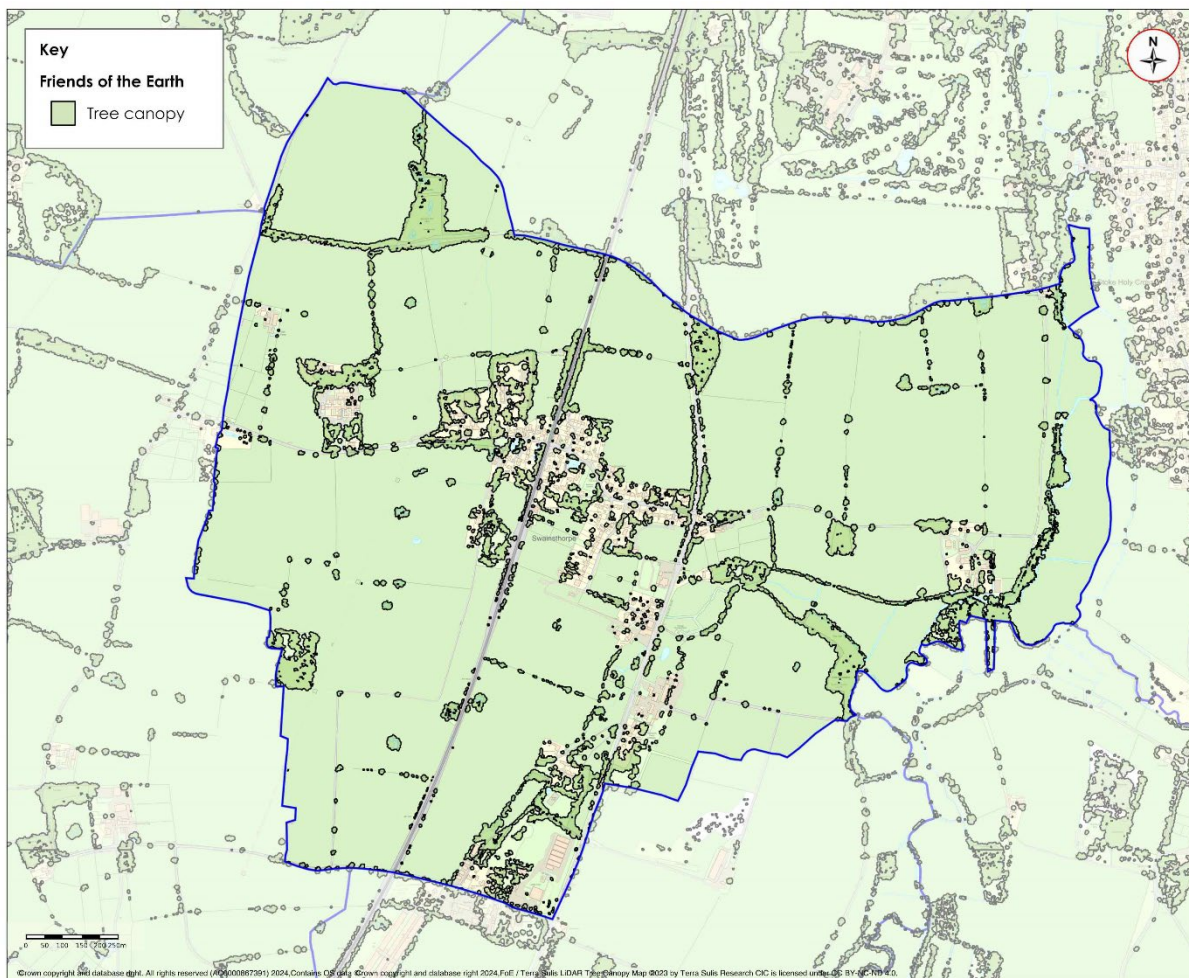
6.2.5 A map showing Agricultural Land Classification can be seen below.

Figure 41 below: Map showing Agricultural Land Classification.
Source: Parish Online Mapping website. Obtained 10.10.2024.



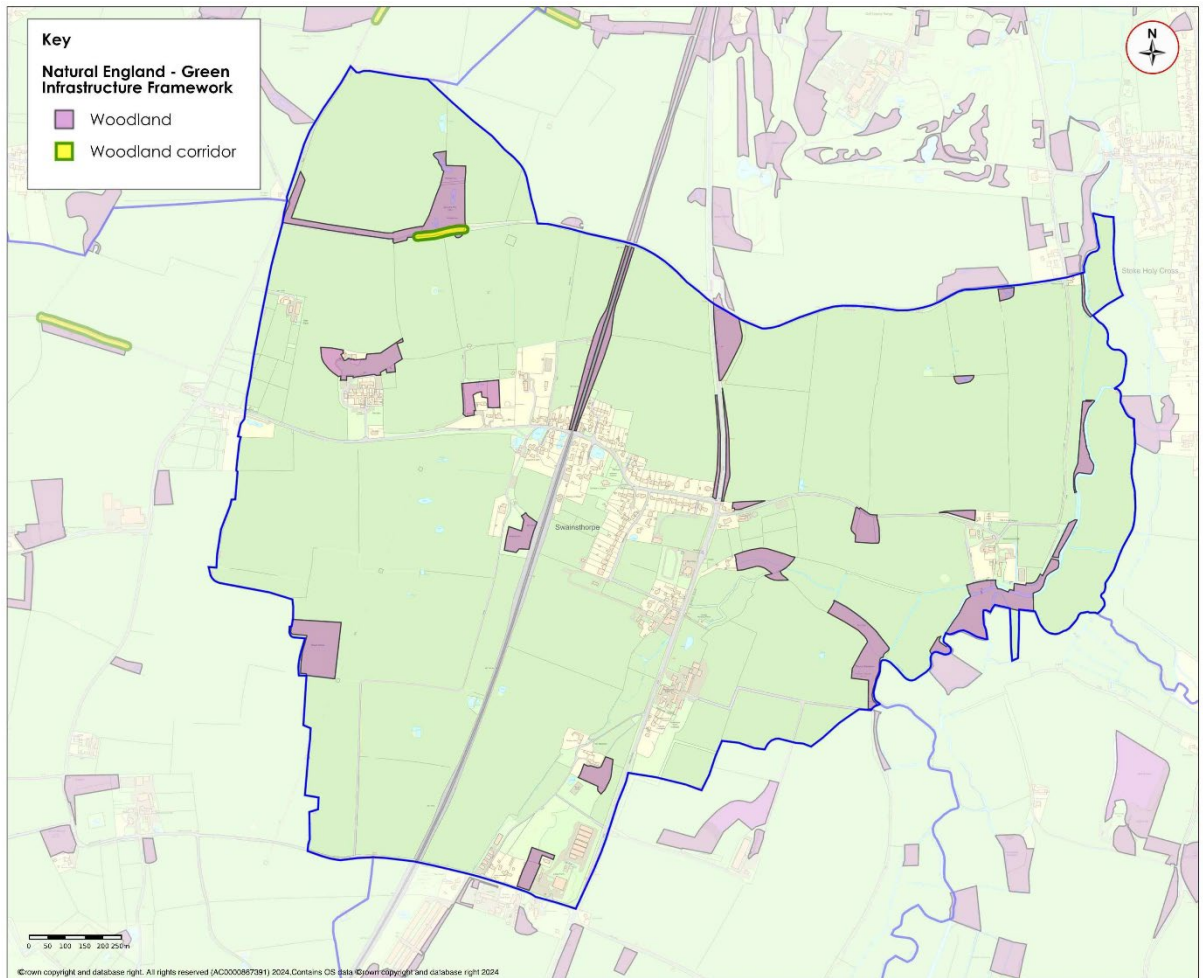
6.2.6 A map showing Friends of the Earth Tree Canopy can be seen in the map below.

Figure 42 below: Map showing Tree Canopy (by Friends of the Earth).
Source: Parish Online mapping website. Obtained 02.10.2024.



6.2.7 A map showing Natural England Green Infrastructure Framework Woodland Corridors and Woodlands can be seen in the map below.

Figure 43 below: Map showing Natural England Green Infrastructure Framework Woodland Corridors and Woodlands in Swainsthorpe parish.
Source: Parish Online mapping website. Obtained 02.10.2024.

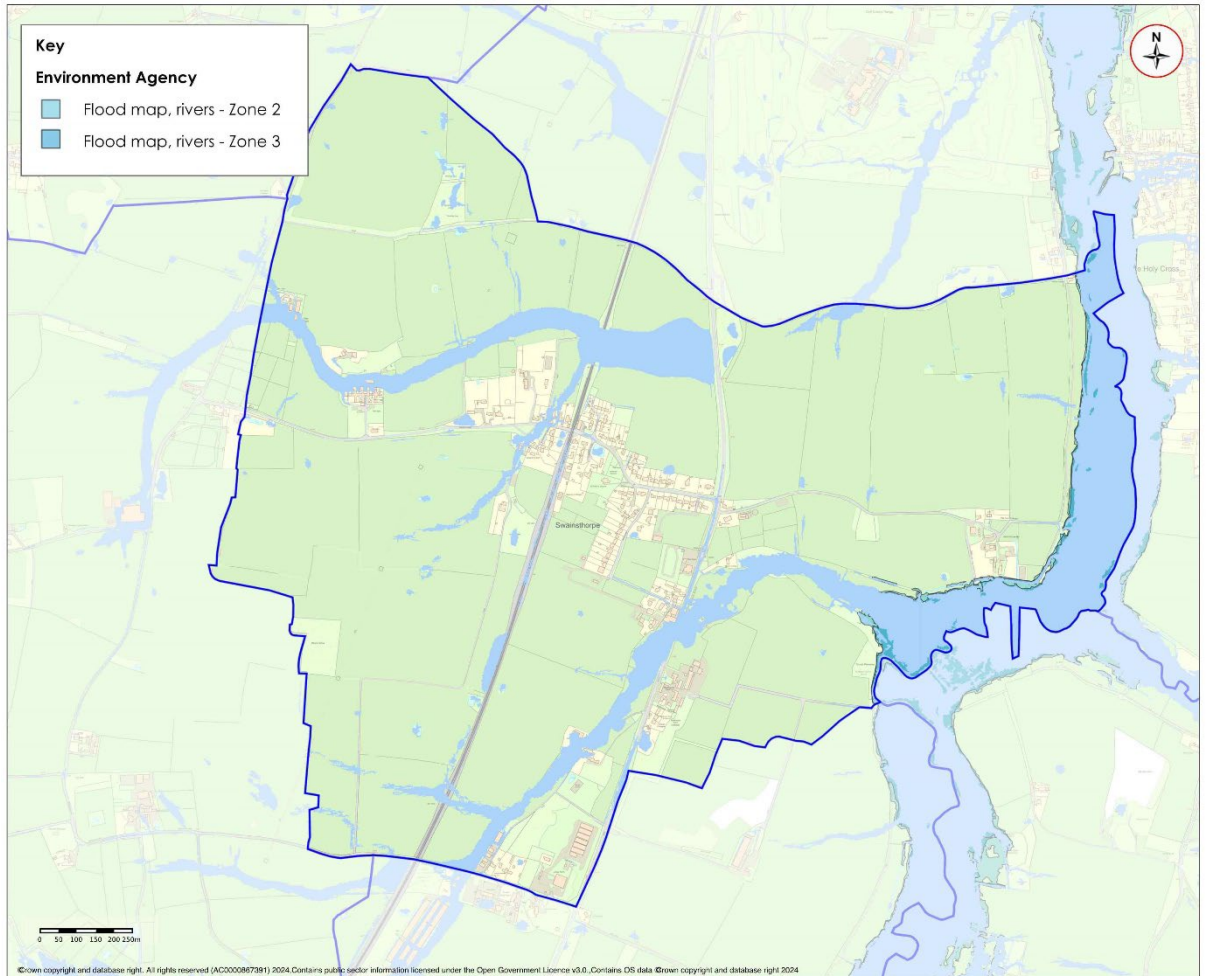


6.3 Water, rivers and flooding

6.3.1 The River Tas flows through Swainsthorpe parish. The River Tas flows northwards towards Norwich.

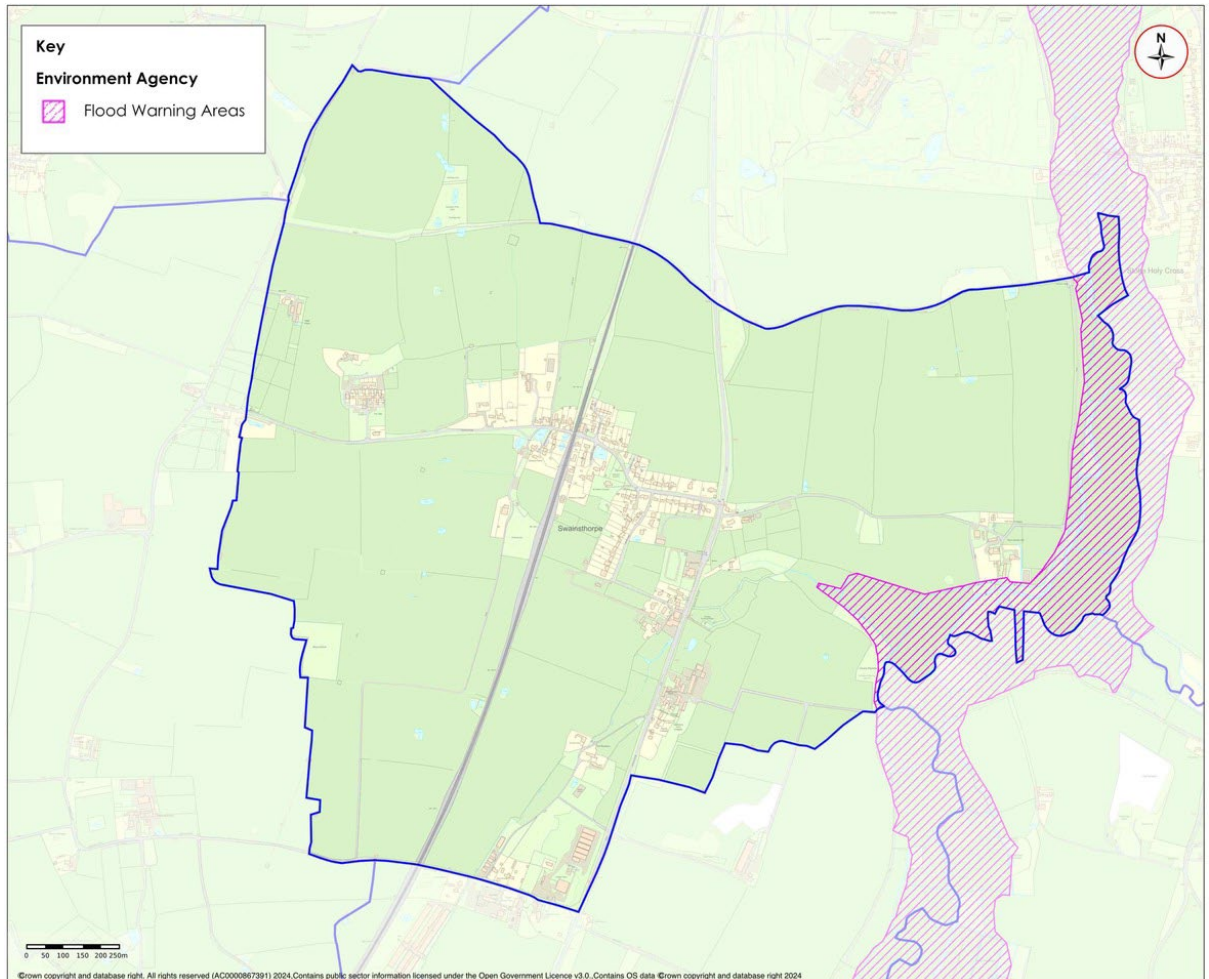
6.3.2 The maps below show the risk of flooding from rivers in the parish.

Figure 44 below: Maps showing the risk of flooding from rivers.
Source: Parish Online mapping. Map obtained 10.10.2024.



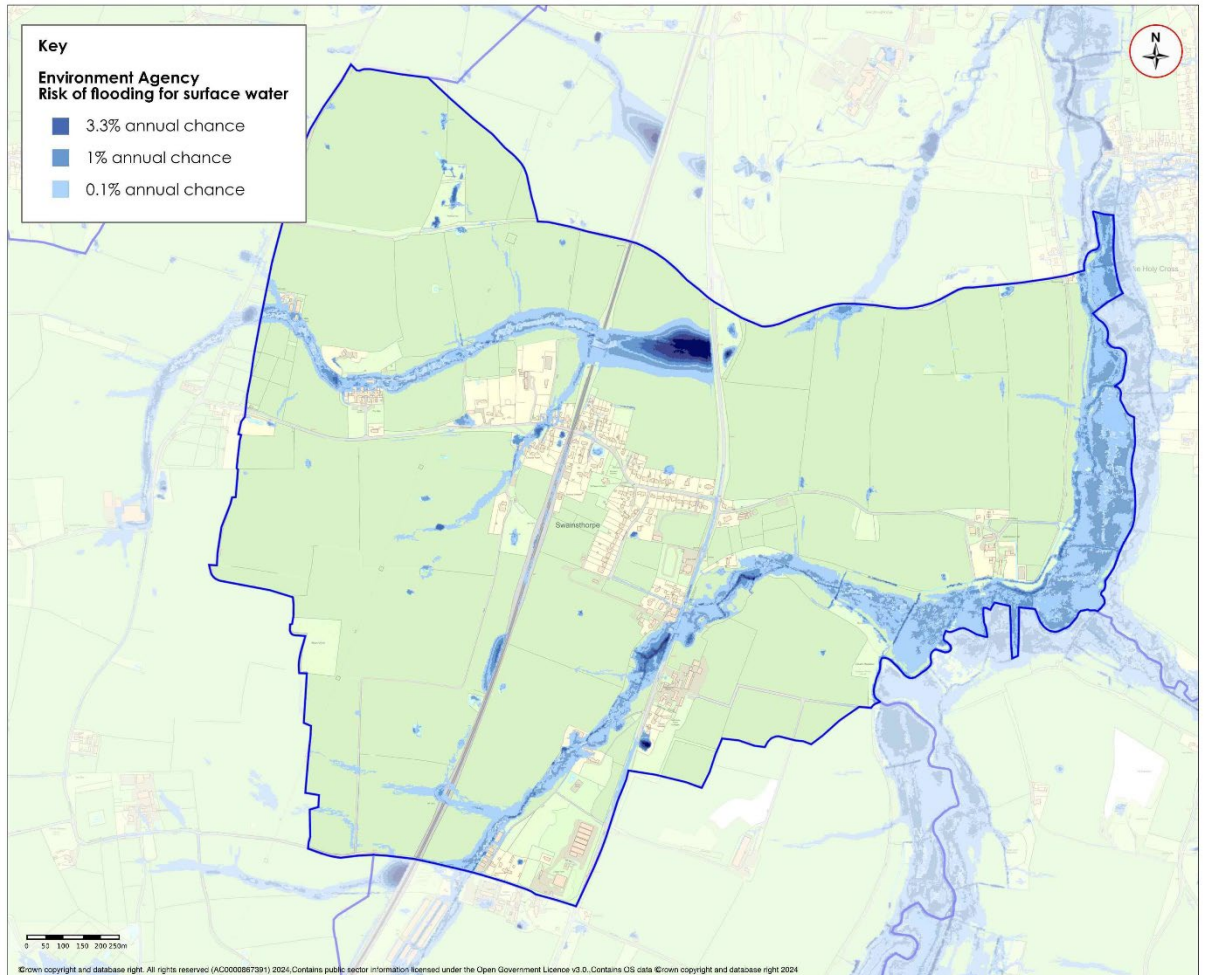
6.3.3 The map below shows the flood warning area in the parish.

**Figure 45 below: Map showing the Flood Warning area in Swainsthorpe parish.
Source: Parish Online mapping website. Information obtained 02.10.2024.**



6.3.4 The map below shows the risk of surface water flooding in Swainsthorpe parish.

Figure 46 below: Map showing surface water flood risk in Swainsthorpe parish.
Source: Environment Agency.²⁶ Information obtained 02.10.2024.



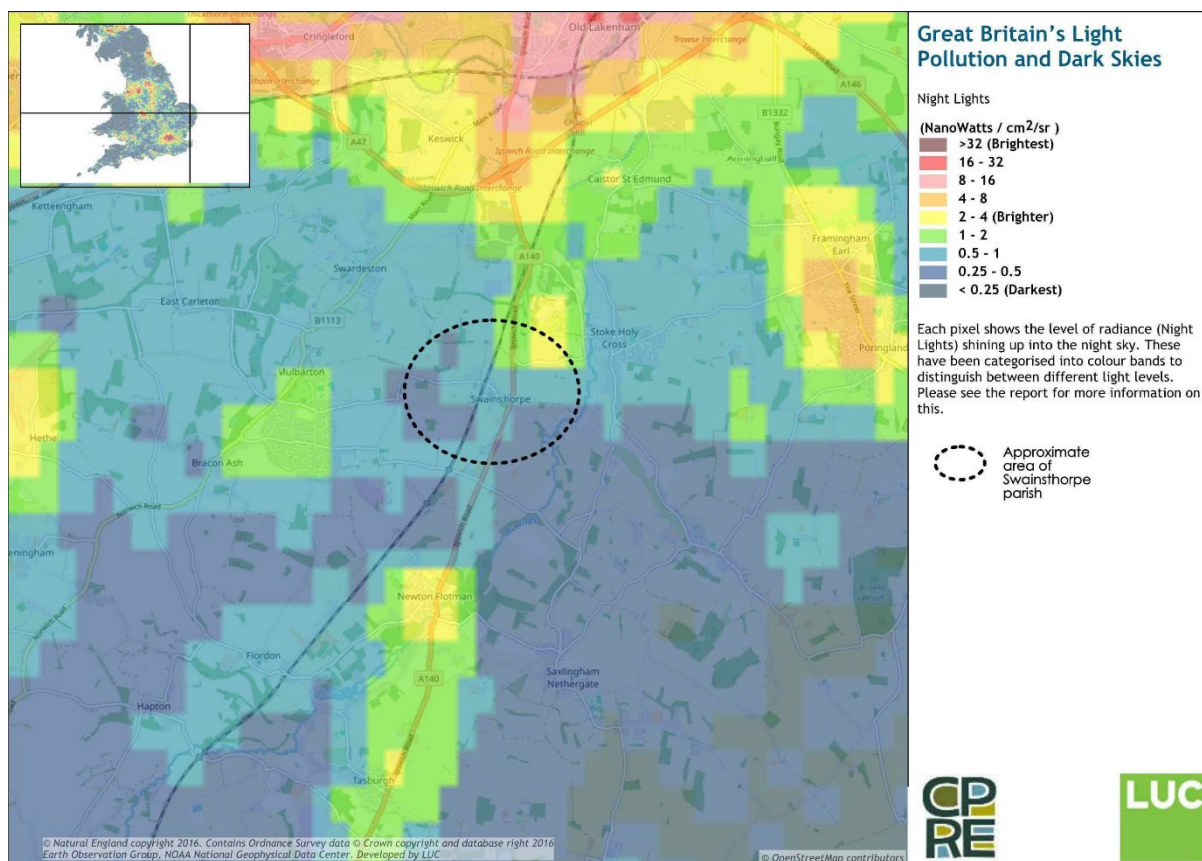
²⁶ www.check-long-term-flood-risk.service.gov.uk. Obtained 29.02.2024.

6.4 Dark skies

6.4.1 Maps showing light pollution and dark skies in Swainsthorpe parish and the surrounding area can be seen on the maps below.

Figure 47 below: Map showing light pollution and dark skies.

Source: <https://nightblight.cpre.org.uk/maps/>. Obtained 02.10.2024.



7. Economy

7.1 Data from the 2021 Census shows that 63.5% of residents aged 16 years and over of Swainsthorpe parish are economically active including full time students. This is higher than 59.8% for South Norfolk and 56.7% for Norfolk.

Figure 48 below: Swainsthorpe parish Economic Activity Census 2021.
Source: Nomis website. Information obtained 10.10.2024.

| Economic Activity Status | Swainsthorpe parish percentage | South Norfolk district percentage | Norfolk percentage |
|---|--------------------------------|-----------------------------------|--------------------|
| Total | 100% | 100% | 100% |
| Economically active | 63.5% | 59.8% | 56.7% |
| Economically active: In employment (including full time students) | 61.8% | 57.8% | 53.9% |
| Economically active: Unemployed (including full time students) | 2.7% | 2.0% | 2.8% |
| Economically inactive | 35.5% | 40.2% | 43.3% |

7.2 Census 2021 Occupation data of all usual residents aged 16 years and over in employment is shown in the table below.

Figure 49 below: Table showing Census 2021 Occupation data for Swainsthorpe parish, South Norfolk and Norfolk.
Source: Nomis website. Information obtained 02.10.2024.

| Occupation (current) | Swainsthorpe parish percentage | South Norfolk percentage | Norfolk percentage |
|---|--------------------------------|--------------------------|--------------------|
| Total: All usual residents aged 16 years and over in employment the week before the Census. | 100% | 100% | 100% |
| 1. Managers, directors and senior officials | 17.8% | 13.9% | 11.9% |
| 2. Professional occupations | 17.8% | 21.2% | 16.6% |
| 3. Associate professional and technical occupations | 17.8% | 13.0% | 11.8% |

| Occupation (current) | Swainsthorpe parish percentage | South Norfolk percentage | Norfolk percentage |
|--|--------------------------------|--------------------------|--------------------|
| 4. Administrative and secretarial occupations | 9.1% | 9.5% | 9.0% |
| 5. Skilled trades occupations | 13.0% | 12.1% | 12.7% |
| 6. Caring, leisure and other service occupations | 8.7% | 9.2% | 10.6% |
| 7. Sales and customer service occupations | 4.3% | 6.7% | 8.1% |
| 8. Process, plant and machine operatives | 3.8% | 6.1% | 8.0% |
| 9. Elementary occupations | 7.7% | 8.3% | 11.2% |

7.3 Data from the 2021 Census shows the industries in which Swainsthorpe parish residents are employed. The highest percentage of residents are employed in public administration, education and health, followed by distribution, hotels and restaurants.

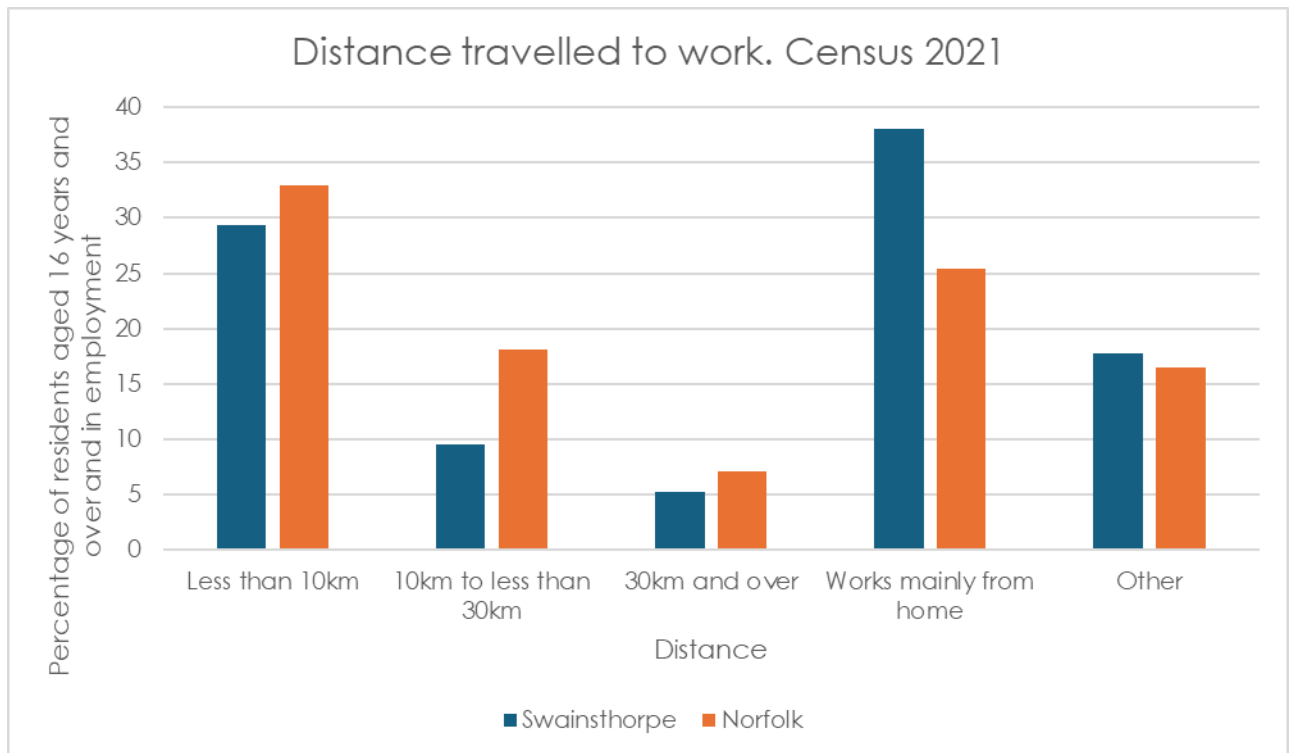
Figure 50 below: Table showing Industry of usual residents in Swainsthorpe parish, Census 2021.

Source: Nomis website. Information obtained 02.10.2024.

| Industry Census 2021 | Swainsthorpe parish percentage |
|---|--------------------------------|
| Total | 100% |
| A, B, D, E Agriculture, energy and water | 3.8% |
| C Manufacturing | 2.8% |
| F Construction | 10.8% |
| G, I Distribution, hotels and restaurants | 18.8% |
| H, J Transport and communication | 7.0% |
| K, L, M, N Financial, real estate, professional and administrative activities | 18.3% |
| O, P, Q Public administration, education and health | 35.2% |
| R, S, T, U Other | 3.3% |

7.4 Distance travelled to work data from the Census 2021 is shown in the graph below. A higher percentage of Swainsthorpe parish residents work from home compared to Norfolk residents.

Figure 51 below: Graph showing distance travelled to work by residents of Swainsthorpe parish and Norfolk aged 16 years and over and in employment. Source: Office for National Statistics Build a Custom Area Profile tool. Information obtained 02.10.2024.



7.5 Businesses listed on www.yell.com in Swainsthorpe parish include:

- Joyce Property Services Ltd.
- RuralAdvice Ltd.
- Anglia Rural Consultants.
- Clear Thinking Property Solutions.
- Joseph Casey Photography.
- D. Francis Paving and Landscaping.
- Employer Partnerships within City College, Norwich.
- Waveney Mushrooms.
- MRB Automotive.
- Plumb Angel Norwich 24/7 Rapid Response.
- Empire Printing and Embroidery.
- Kit Factory Sports Shops.
- Country Colores.
- Eagles in the Sky Aerial Photography.
- Sugar Beet Eating House.

Appendix 1: Census 2021 data for Swainsthorpe parish compared to South Norfolk district and Norfolk.

Source: Office for National Statistics 'Build a custom area profile' tool.²⁷ Obtained 02.12.2024.

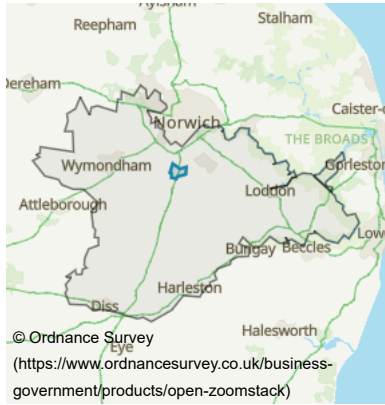
Please note the data and boundaries displayed in these profiles are aggregated from small areas on a best-fit basis, and therefore may differ slightly from other sources. Values may vary slightly from other published Census 2021 statistics because the 'cell-key method' adds a small amount of noise to some cells in published datasets to protect against disclosure by differencing.

²⁷ www.ons.gov.uk/visualisations/customprofiles/draw/. Information obtained 02.12.2024.

Swainsthorpe

Area map

Swainsthorpe (South Norfolk)



Population

390

people

141,900 people in South Norfolk

Rounded to the nearest 10 people

Number of households

160

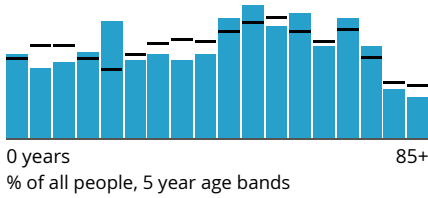
households

61,400 households in South Norfolk

Rounded to the nearest 10 households

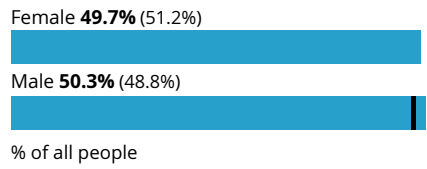
Age profile

Swainsthorpe (South Norfolk)



Sex

Swainsthorpe (South Norfolk)



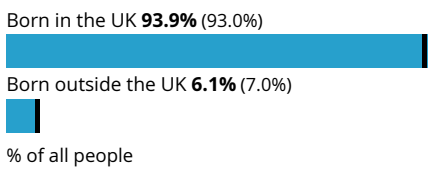
Legal partnership status

Swainsthorpe (South Norfolk)



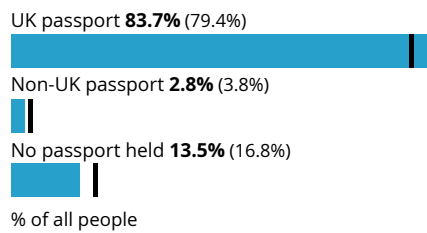
Country of birth

Swainsthorpe (South Norfolk)



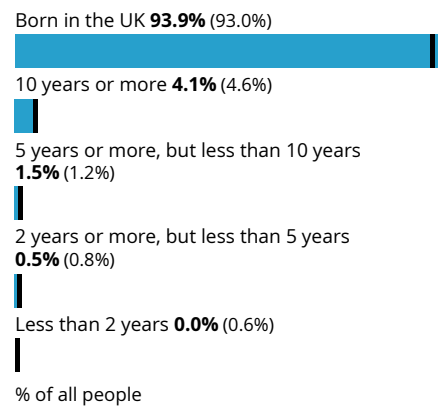
Passports held

Swainsthorpe (South Norfolk)

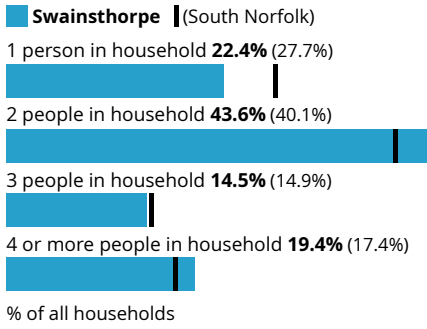


Length of residence in the UK

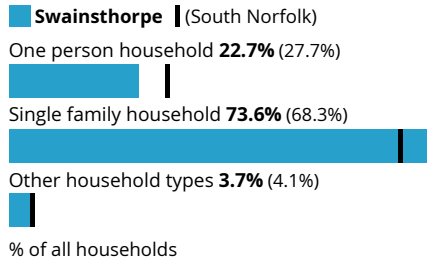
Swainsthorpe (South Norfolk)



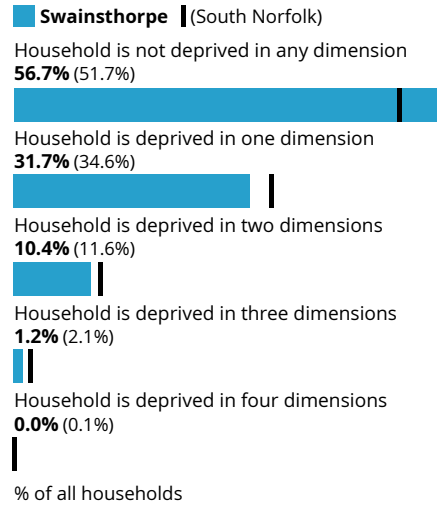
Household size



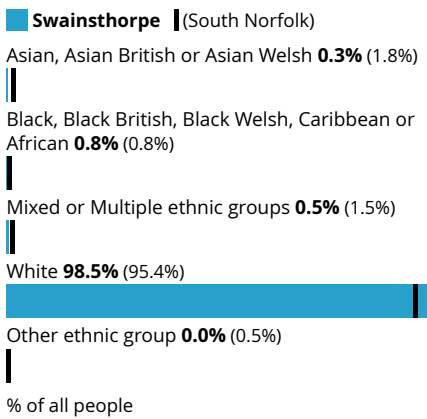
Household composition



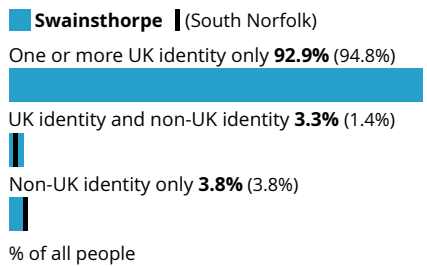
Household deprivation



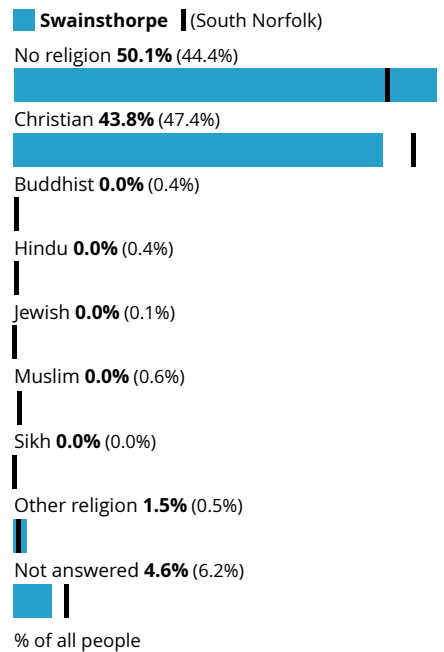
Ethnic group



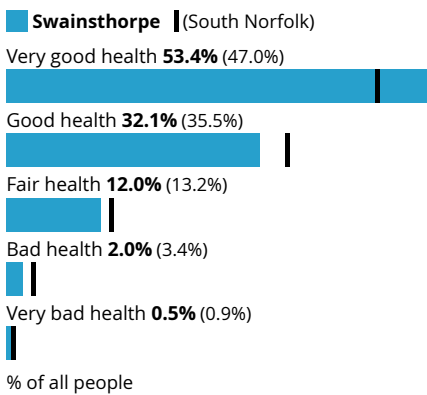
National identity



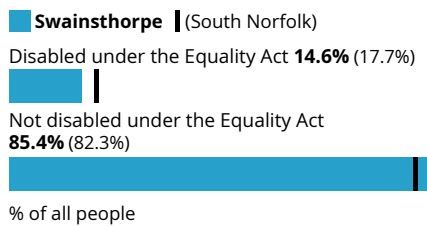
Religion



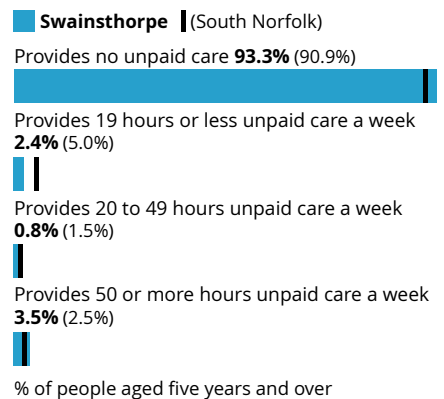
General health



Disability



Provision of unpaid care



Proficiency in English

Swainsthorpe (South Norfolk)

Main language is English (English or Welsh in Wales) **98.4%** (97.4%)

Can speak English very well **0.5%** (1.4%)

Can speak English well **0.3%** (0.8%)

Cannot speak English well **0.5%** (0.3%)

Cannot speak English **0.3%** (0.1%)

% of people aged three years and over

Accommodation type

Swainsthorpe (South Norfolk)

Whole house or bungalow **92.2%** (93.1%)

Flat, maisonette or apartment **7.8%** (6.6%)

A caravan or other mobile or temporary structure **0.0%** (0.3%)

% of all households

Number of cars or vans

Swainsthorpe (South Norfolk)

No cars or vans in household **3.6%** (10.5%)

1 car or van in household **44.2%** (40.1%)

2 cars or vans in household **31.5%** (35.1%)

3 or more cars or vans in household **20.6%** (14.3%)

% of all households

Central heating

Swainsthorpe (South Norfolk)

Does not have central heating **1.2%** (1.1%)

Does have central heating **98.8%** (98.9%)

% of all households

Number of bedrooms

Swainsthorpe (South Norfolk)

1 bedroom **4.9%** (6.0%)

2 bedrooms **22.0%** (23.9%)

3 bedrooms **40.2%** (41.3%)

4 or more bedrooms **32.9%** (28.7%)

% of all households

Occupancy rating for bedrooms

Swainsthorpe (South Norfolk)

+2 or more **48.8%** (48.6%)

+1 **34.8%** (33.5%)

0 **16.5%** (16.6%)

-1 **0.0%** (1.2%)

-2 or less **0.0%** (0.1%)

% of all households

Tenure of household

Swainsthorpe (South Norfolk)

Owns outright **43.1%** (41.9%)

Owns with a mortgage or loan or shared ownership **39.4%** (32.5%)

Social rented **3.1%** (11.7%)

Private rented or lives rent free **14.4%** (13.9%)

% of all households

Second address indicator

Swainsthorpe (South Norfolk)

No second address **95.7%** (95.5%)

Second address is in the UK **2.8%** (3.8%)

Second address is outside the UK **1.5%** (0.8%)

% of all households

Distance travelled to work

Swainsthorpe (South Norfolk)

Less than 10km **29.3%** (26.9%)

10km to less than 30km **9.6%** (20.3%)

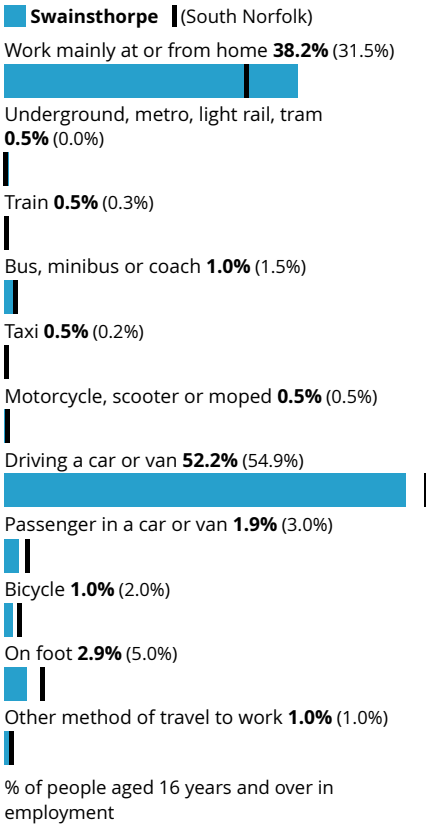
30km and over **5.3%** (6.1%)

Works mainly from home **38.0%** (31.5%)

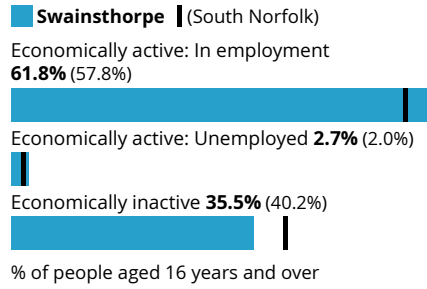
Other **17.8%** (15.2%)

% of people aged 16 years and over in employment

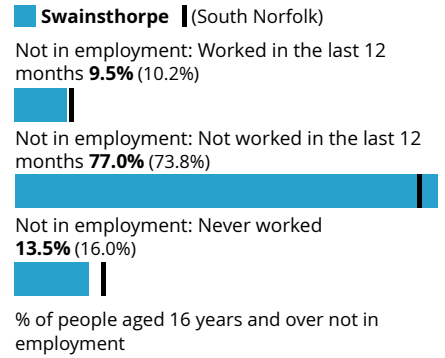
Method of travel to workplace



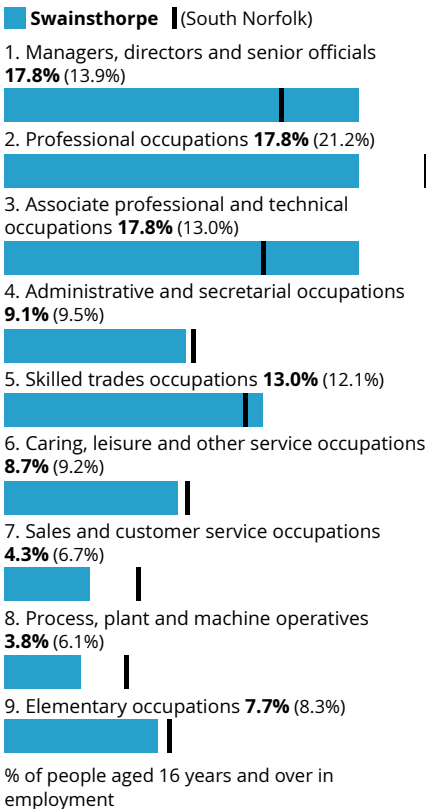
Economic activity status



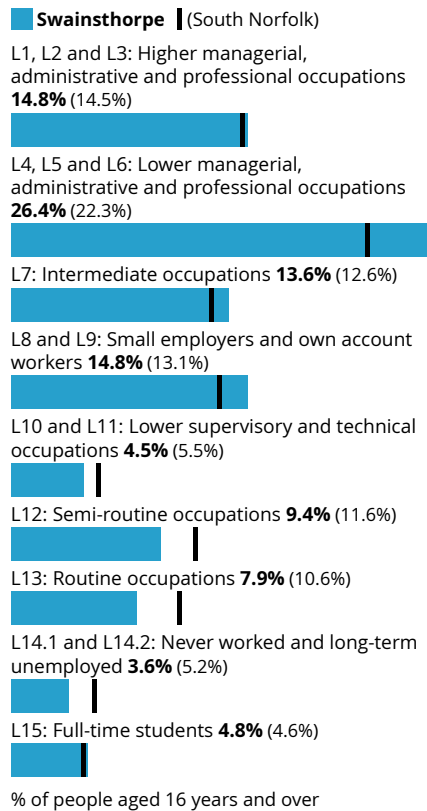
Employment history



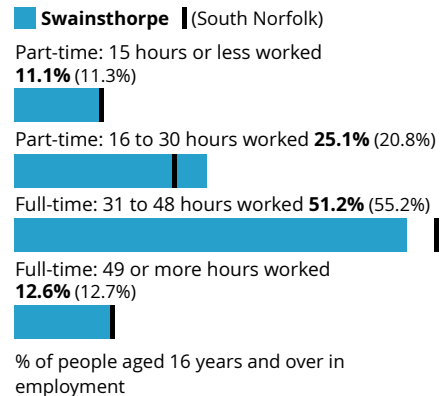
Occupation



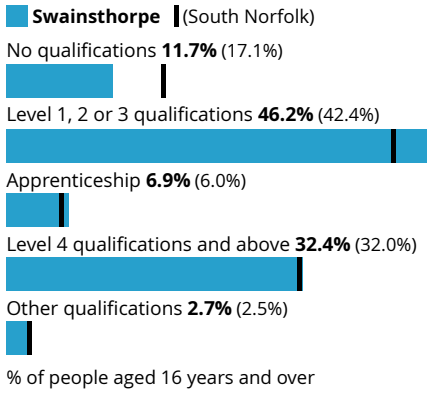
Socio-economic Classification (NS-SeC)



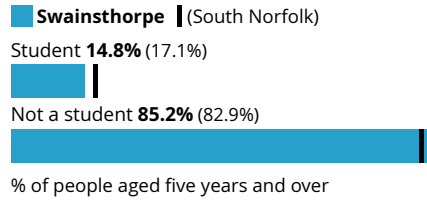
Hours per week worked



Highest level of qualification



Schoolchildren and full-time students

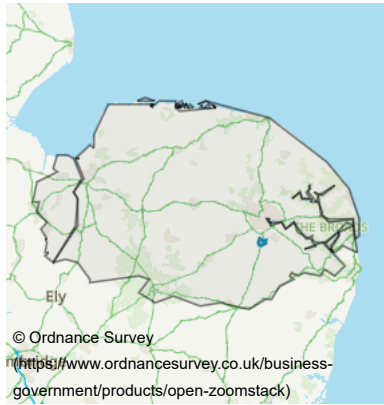


Source: Office for National Statistics - Census 2021

Swainsthorpe

Area map

Swainsthorpe (Norfolk)



Population

390

people

916,100 people in Norfolk

Rounded to the nearest 10 people

Number of households

160

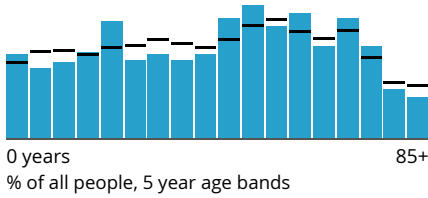
households

404,300 households in Norfolk

Rounded to the nearest 10 households

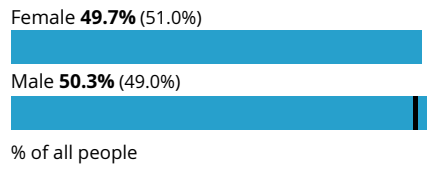
Age profile

Swainsthorpe (Norfolk)



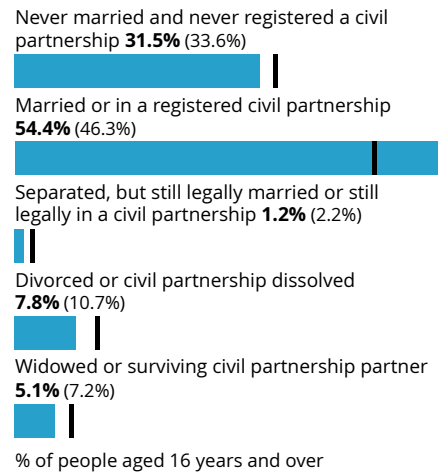
Sex

Swainsthorpe (Norfolk)



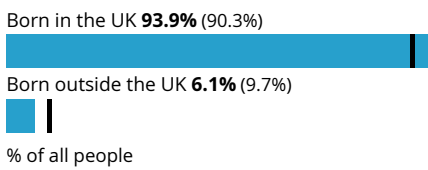
Legal partnership status

Swainsthorpe (Norfolk)



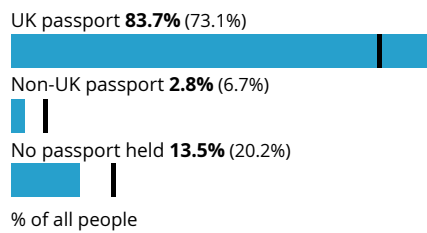
Country of birth

Swainsthorpe (Norfolk)



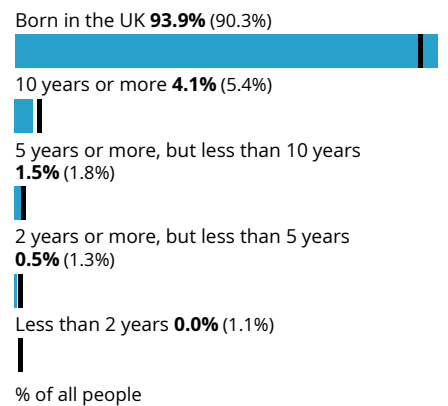
Passports held

Swainsthorpe (Norfolk)

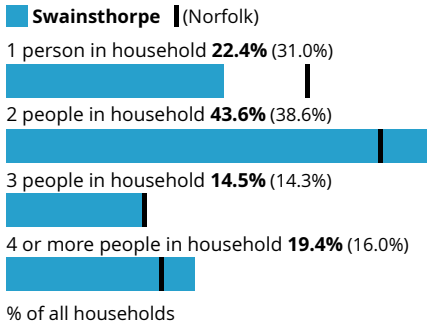


Length of residence in the UK

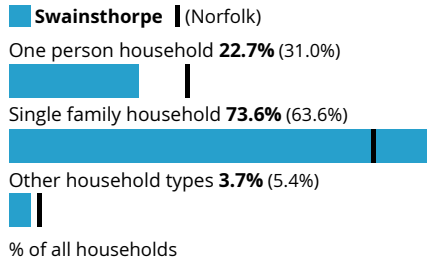
Swainsthorpe (Norfolk)



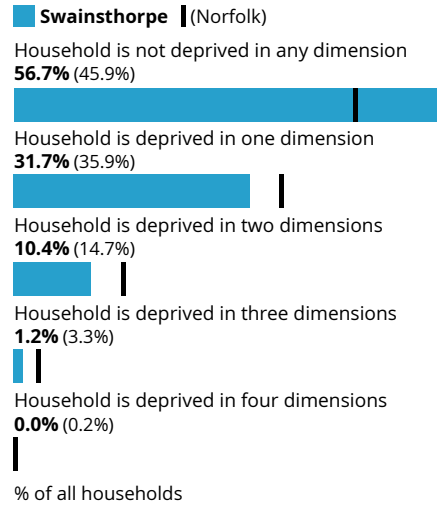
Household size



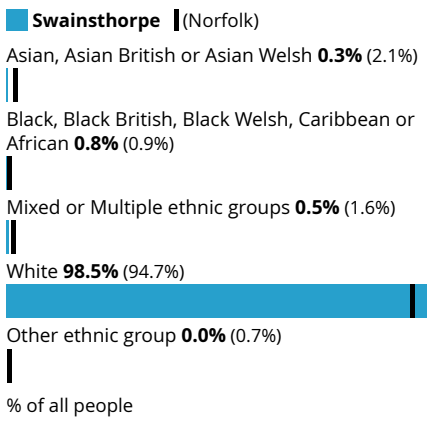
Household composition



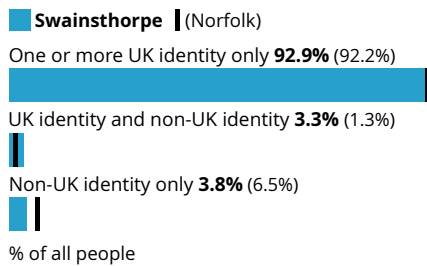
Household deprivation



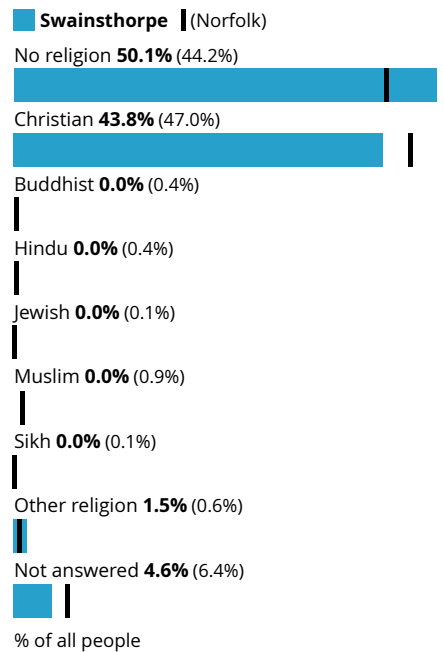
Ethnic group



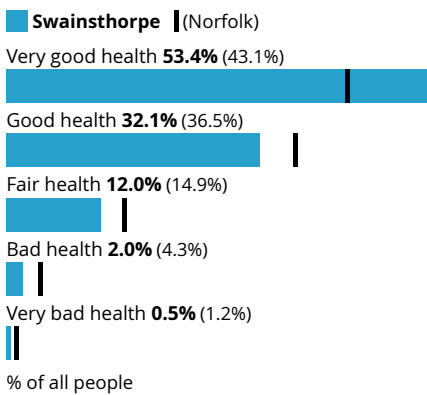
National identity



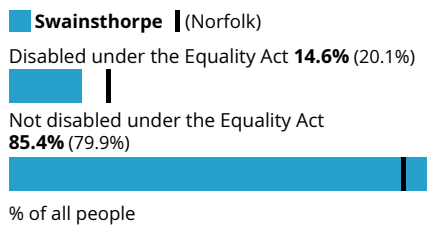
Religion



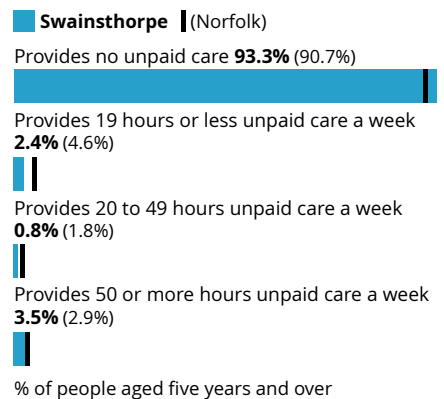
General health



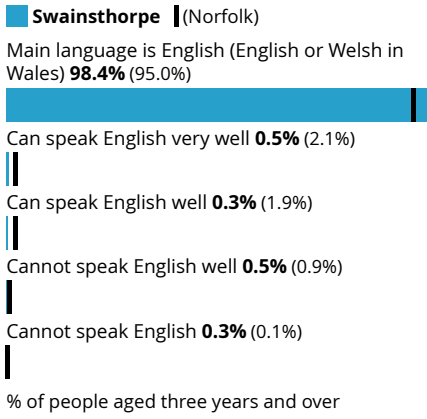
Disability



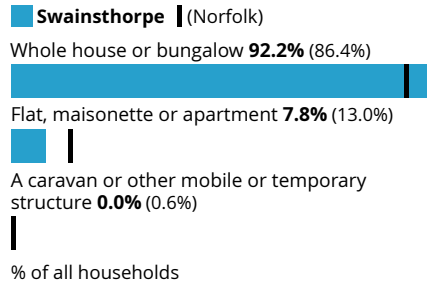
Provision of unpaid care



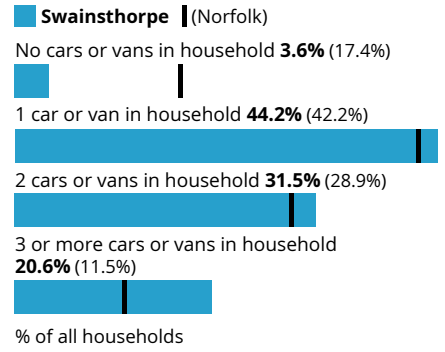
Proficiency in English



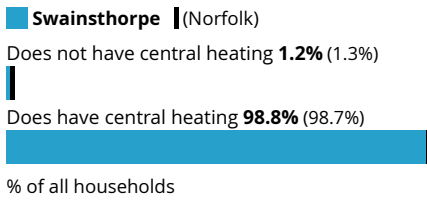
Accommodation type



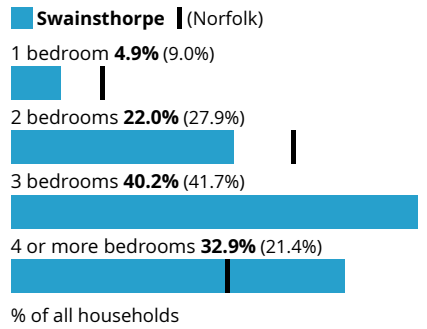
Number of cars or vans



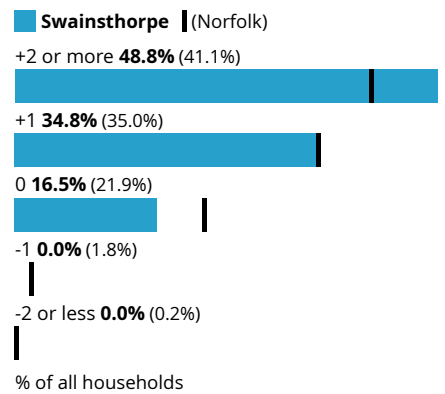
Central heating



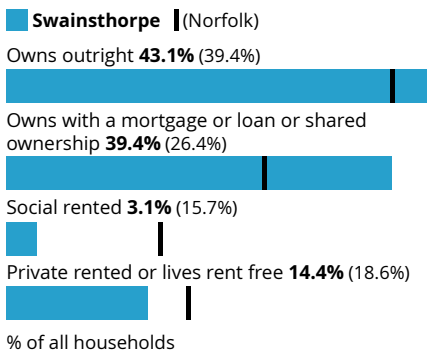
Number of bedrooms



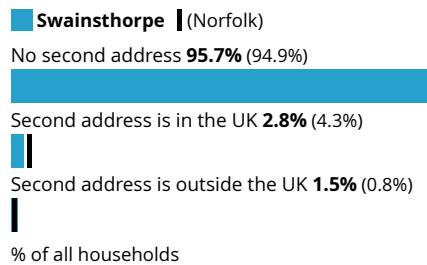
Occupancy rating for bedrooms



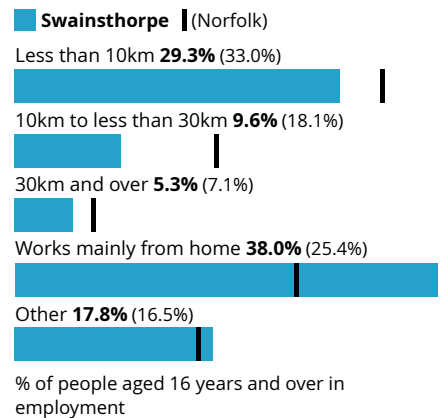
Tenure of household



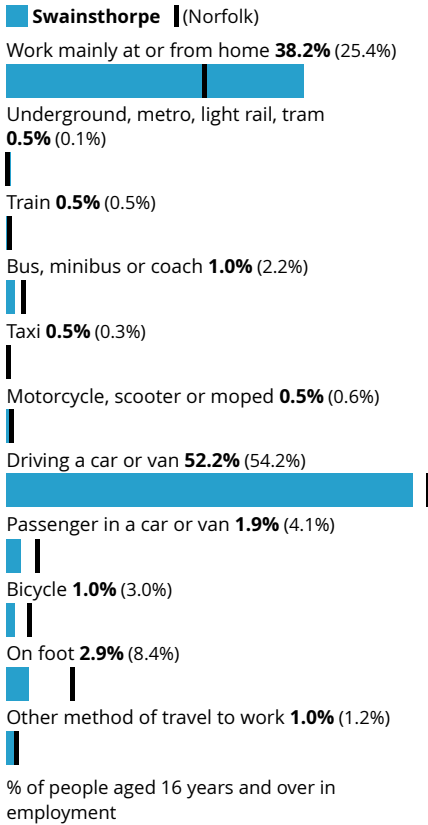
Second address indicator



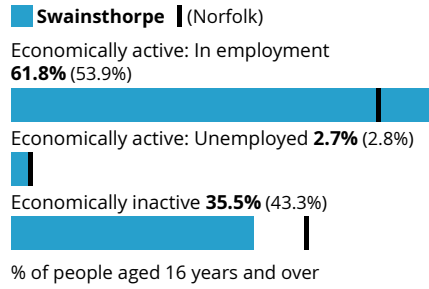
Distance travelled to work



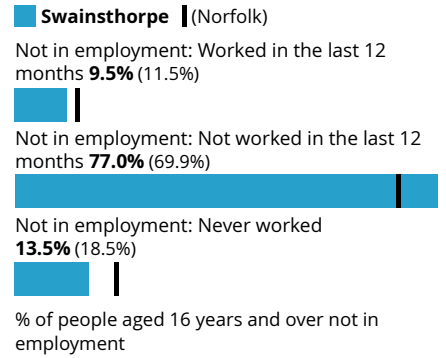
Method of travel to workplace



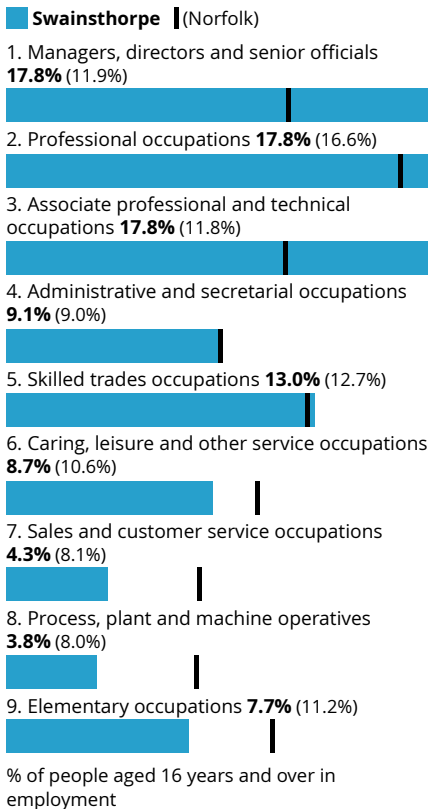
Economic activity status



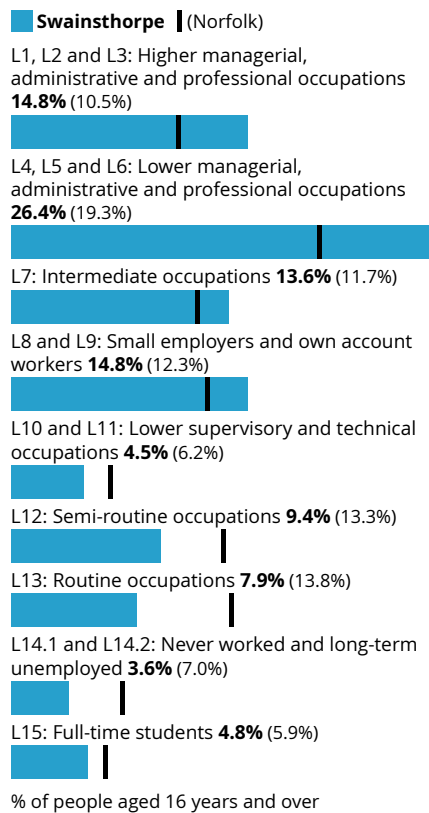
Employment history



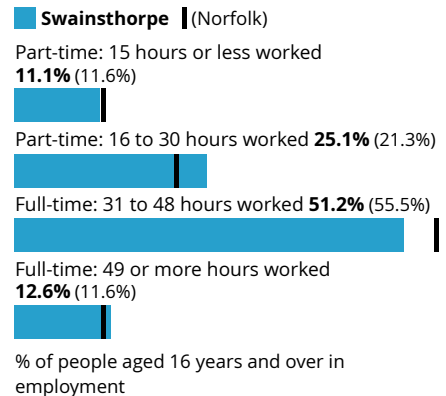
Occupation



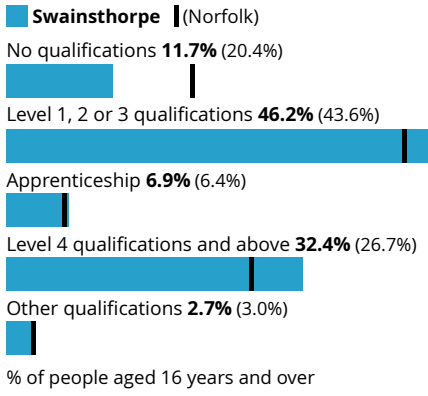
Socio-economic Classification (NS-SeC)



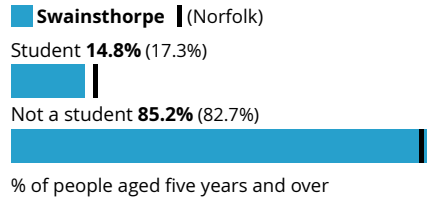
Hours per week worked



Highest level of qualification



Schoolchildren and full-time students



Source: Office for National Statistics - Census 2021